


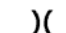
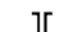

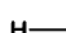







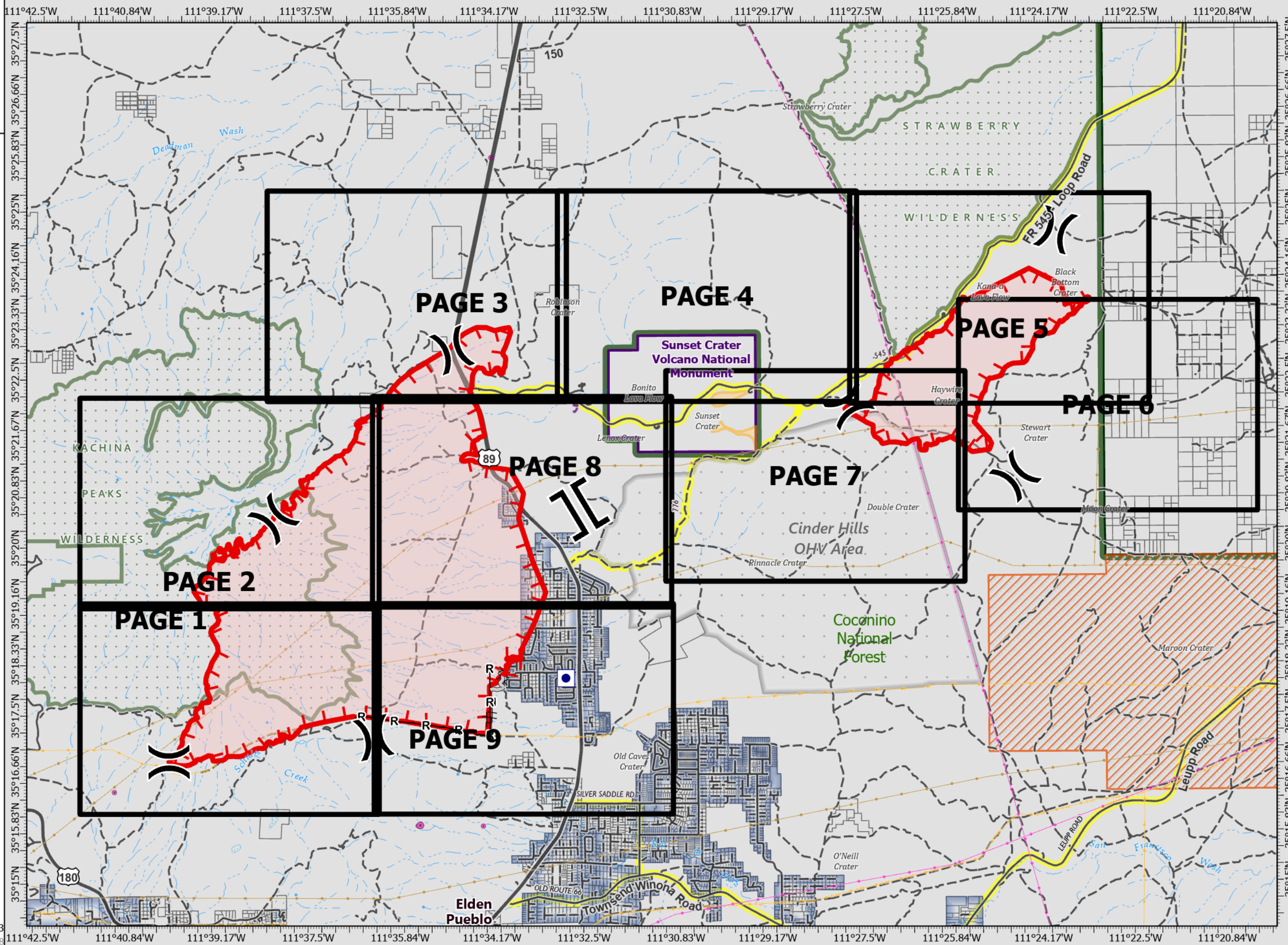


Pipeline

AZ-COF-000529
06/14/22 0600

-  IAPGridIndex
-  Label Point
-  Other Property
-  Division Break
-  Branch Break
-  Completed Dozer Line
-  Completed Hand Line
-  Completed Road as Line
-  Access or Improved Road
-  Fire Edge (Field Collection)
-  Uncontained
-  Wildfire Daily Fire Perimeter
-  Coconino County Parcels
-  Highlighted Roads

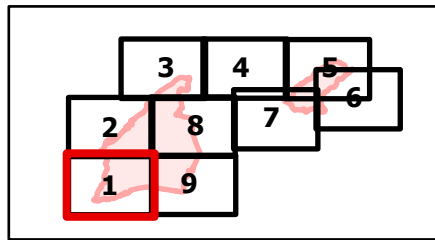


Pipeline

AZ-COF-000529
06/14/22 0600

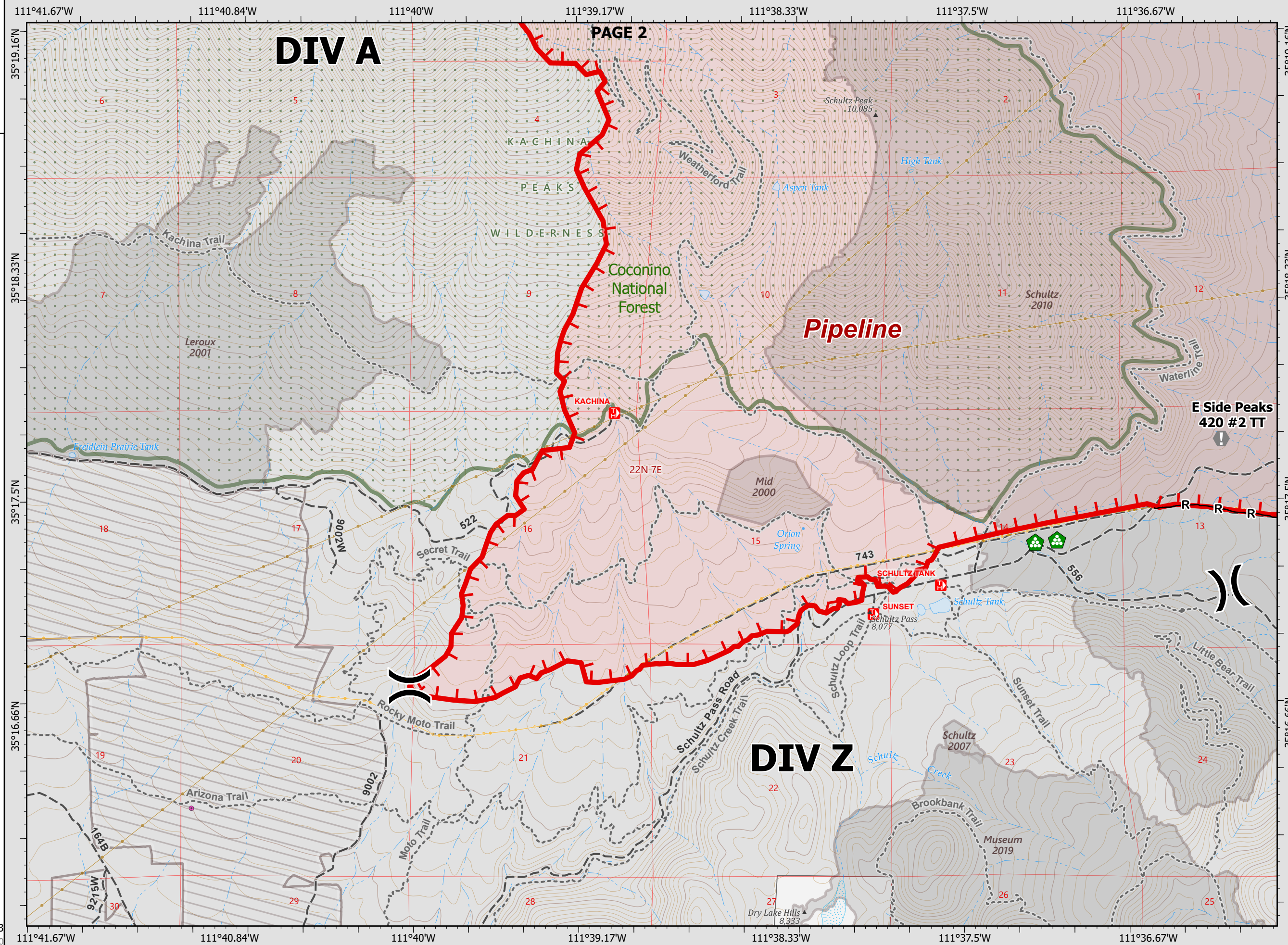
PAGE 1
DIVISION Z/A

- Division Break
- Value at Risk
- Landing or Log Deck
- Wildfire Daily Fire Perimeter
- Completed Road as Line
- Uncontained
- Trailhead
- Substation
- Oil and Natural Gas Pipelines
- Natural Gas Liquid Pipeline
- Local Road - Unpaved
- Non-NPS Trail
- Fire History
- Rx Treatments
- Proclaimed Forest Boundary
- Federal Wilderness Boundary
- Coconino County Parcels
- State Boundary
- County Boundary
- Private



Scale: 0 0.13 0.25 0.5 Miles

Datum: North American 1983
CAIIMT15 Updated: 6/13/2022 2250

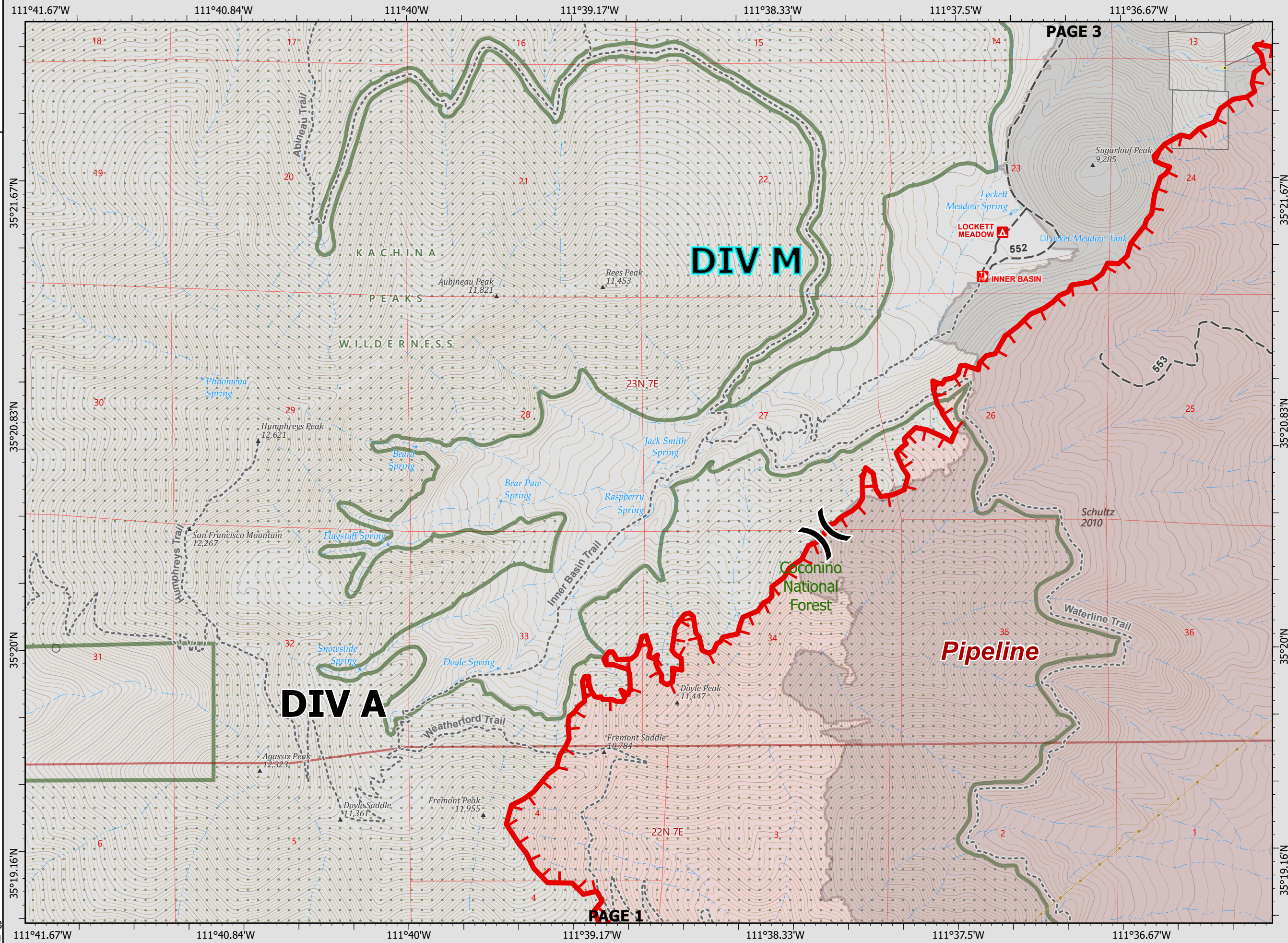
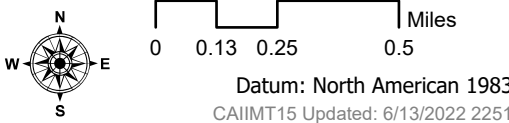
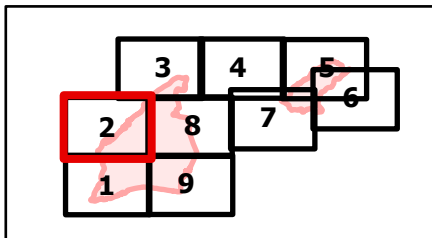


Pipeline

AZ-COF-000529
06/14/22 0600

PAGE 2
DIVISION A/M

- (X) Division Break
- Value at Risk
- Wildfire Daily Fire Perimeter
- Uncontained
- Campground; Group Campground
- Trailhead
- Natural Gas Liquid Pipeline
- Local Road - Unpaved
- Non-NPS Trail
- Structure
- Fire History
- Proclaimed Forest Boundary
- Federal Wilderness Boundary
- Coconino County Parcels
- State Boundary
- County Boundary
- Private

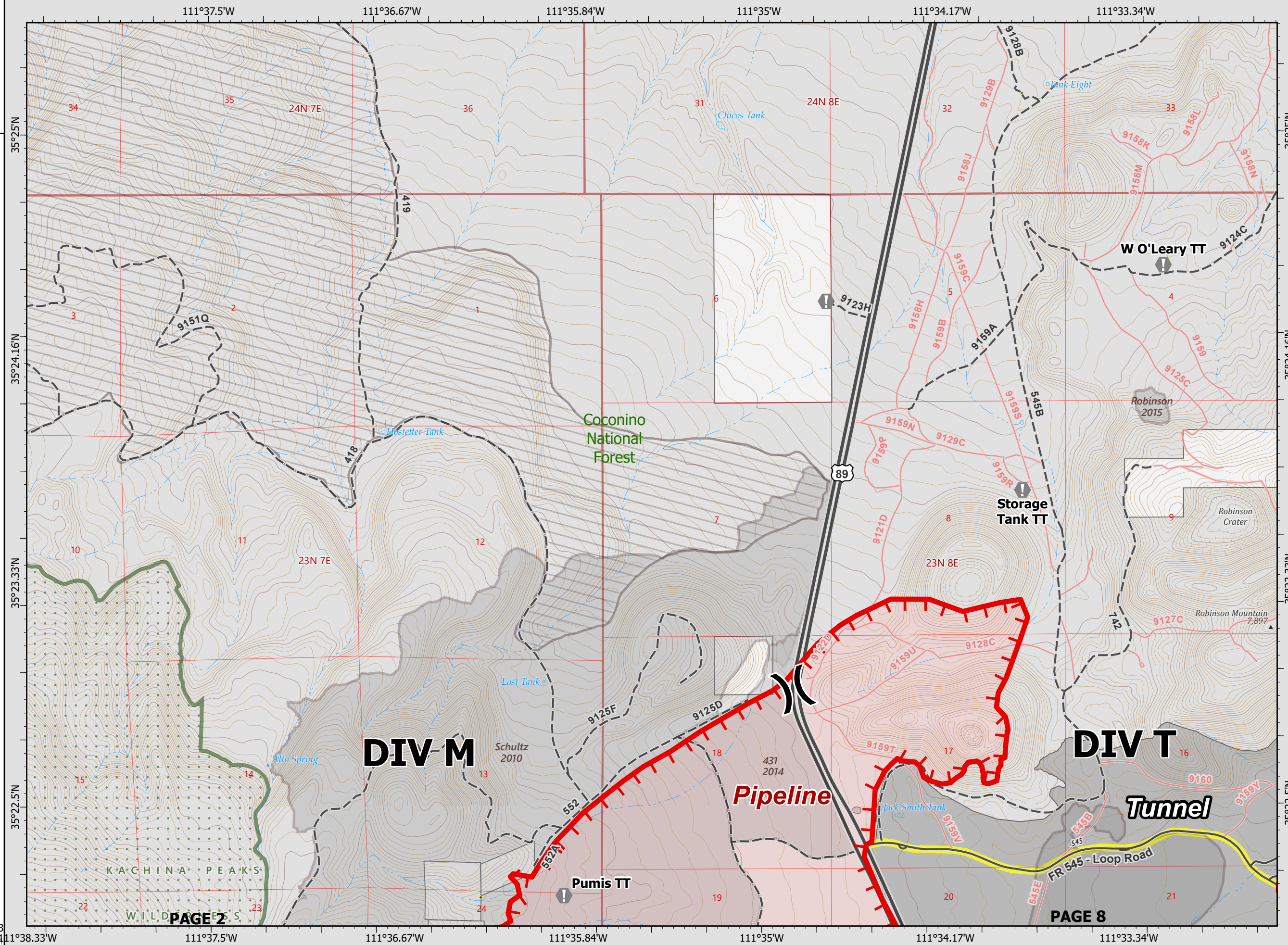
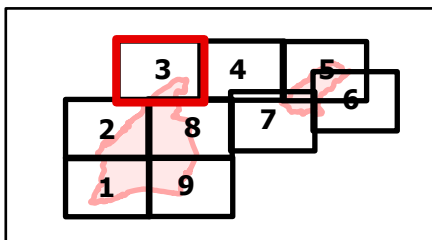


Pipeline

AZ-COF-000529
06/14/22 0600

PAGE 3
DIVISION M/T

- Division Break
- Value at Risk
- Wildfire Daily Fire Perimeter
- Uncontained
- Point of Interest
- Secondary Road
- Local Road - Paved
- Local Road - Unpaved
- Closed Road
- Structure
- Fire History
- Rx Treatments
- Proclaimed Forest Boundary
- Federal Wilderness Boundary
- Coconino County Parcels
- State Boundary
- County Boundary
- Highlighted Roads
- Private

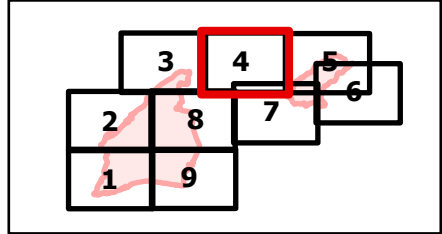


Pipeline

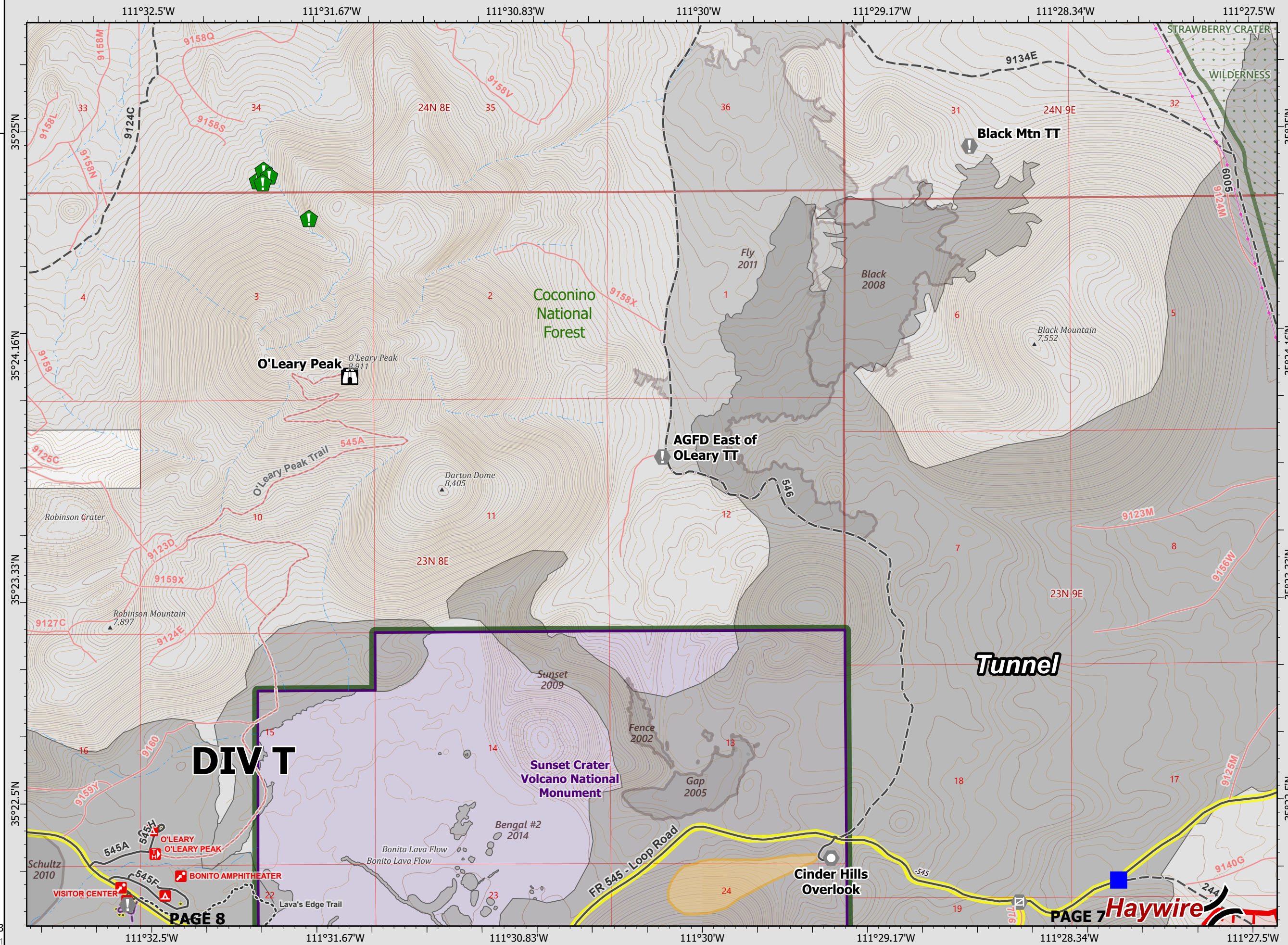
AZ-COF-000529
06/14/22 0600

PAGE 4
DIVISION T

- Division Break
- Drop Point
- Lookout
- Value at Risk
- Landmark
- Gate
- Resource Location
- Wildfire Daily Fire Perimeter
- Uncontained
- Campground; Group Campground
- Trailhead
- Interpretive Site
- Visitor Center
- Point of Interest
- Power Lines
- Local Road - Paved
- Local Road - Unpaved
- NPS Administrative Road - Paved
- NPS Administrative Road - Unpaved
- Closed Road
- NPS Trail
- Non-NPS Trail
- Structure
- Preferred route up Sunset Crater
- Fire History
- NPS Unit Boundary
- Proclaimed Forest Boundary
- Federal Wilderness Boundary
- Coconino County Parcels
- State Boundary
- County Boundary
- Highlighted Roads
- National Park Service (NPS) Private



Datum: North American 1983
CAIIMT15 Updated: 6/13/2022 2251

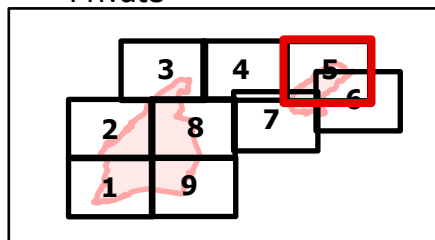


Pipeline

AZ-COF-000529
06/14/22 0600

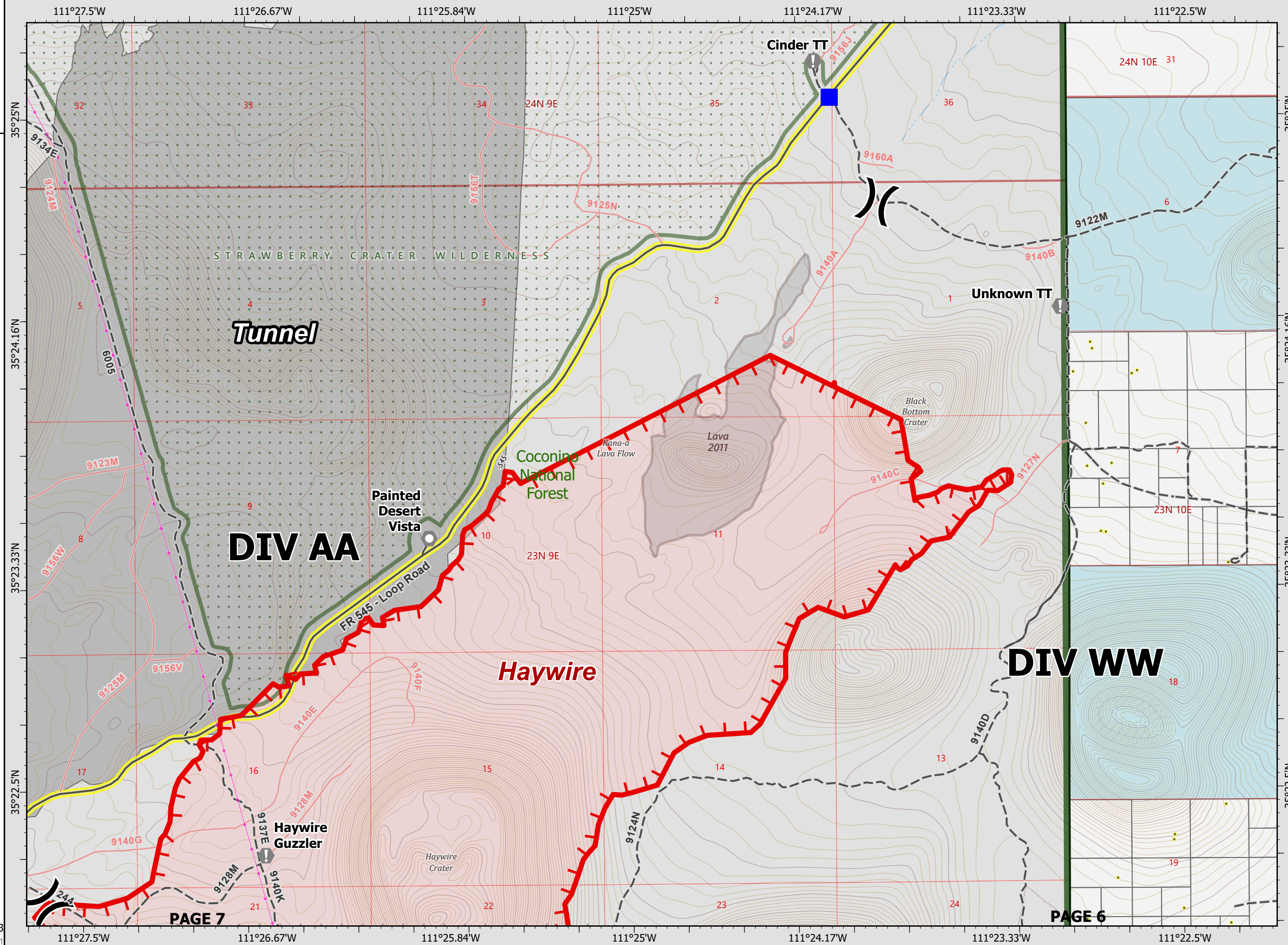
PAGE 5
DIVISION AA

- Division Break
- Drop Point
- Value at Risk
- Landmark
- Wildfire Daily Fire Perimeter
- Uncontained
- Picnic Site; Group Picnic Site
- Power Lines
- Local Road - Paved
- Local Road - Unpaved
- Closed Road
- Structure
- Fire History
- Proclaimed Forest Boundary
- Federal Wilderness Boundary
- Coconino County Parcels
- State Boundary
- County Boundary
- Highlighted Roads
- State
- Private



Scale: 0 0.13 0.25 0.5 Miles

Datum: North American 1983
CAIIMT15 Updated: 6/13/2022 2251

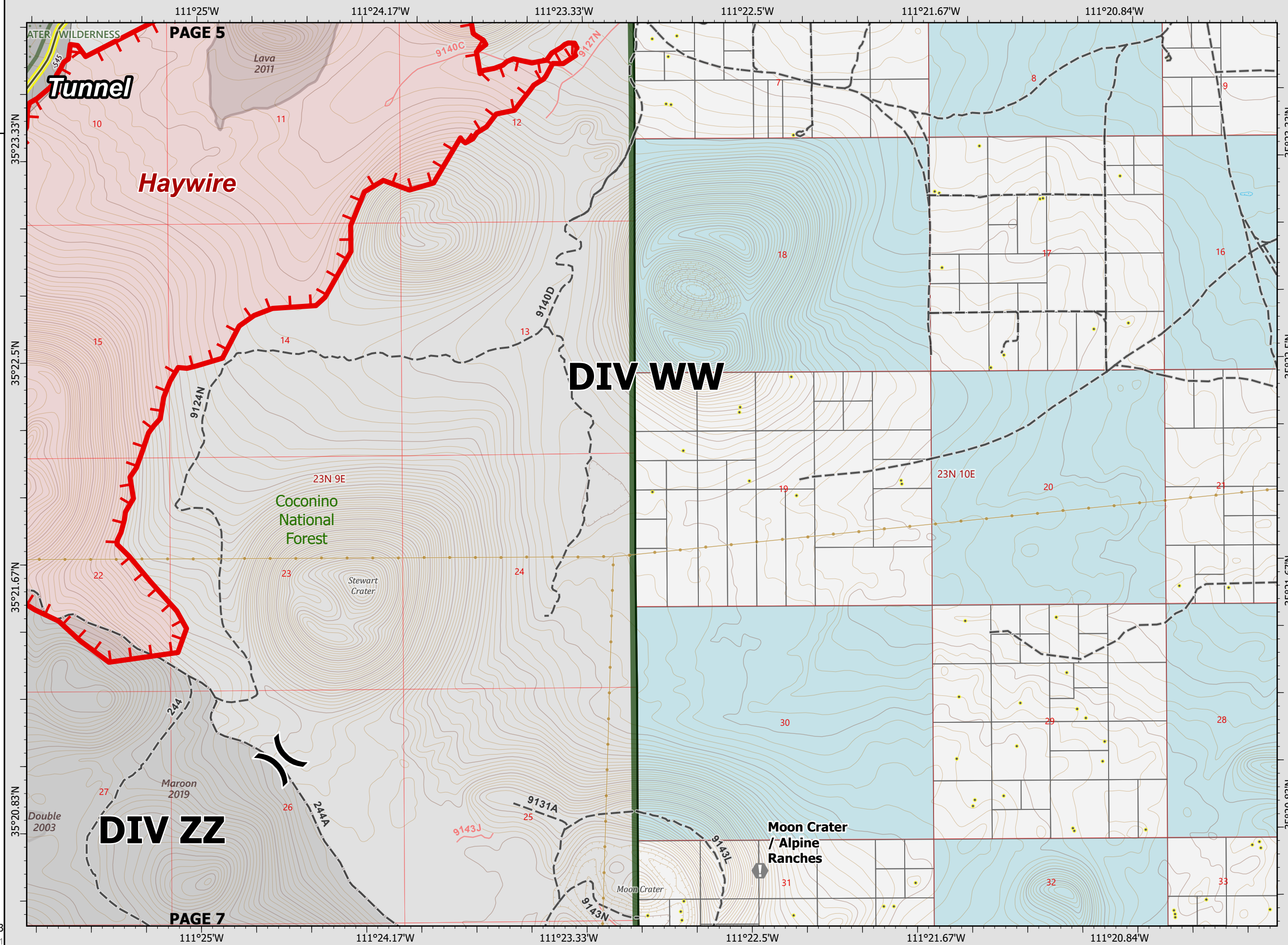
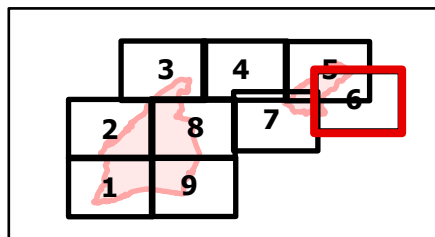


Pipeline

AZ-COF-000529
06/14/22 0600

PAGE 6
DIVISION WW/ZZ

- (X) Division Break
- (I) Value at Risk
- (O) Landmark
- Wildfire Daily Fire Perimeter
- Uncontained
- Natural Gas Liquid Pipeline
- Local Road - Paved
- Local Road - Unpaved
- Closed Road
- Structure
- Fire History
- Proclaimed Forest Boundary
- Federal Wilderness Boundary
- Coconino County Parcels
- State Boundary
- County Boundary
- Highlighted Roads
- State
- Private

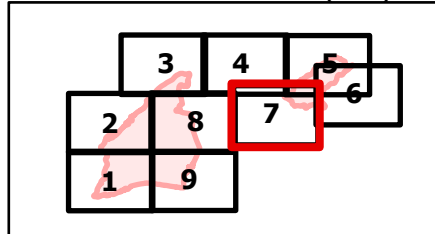


Pipeline

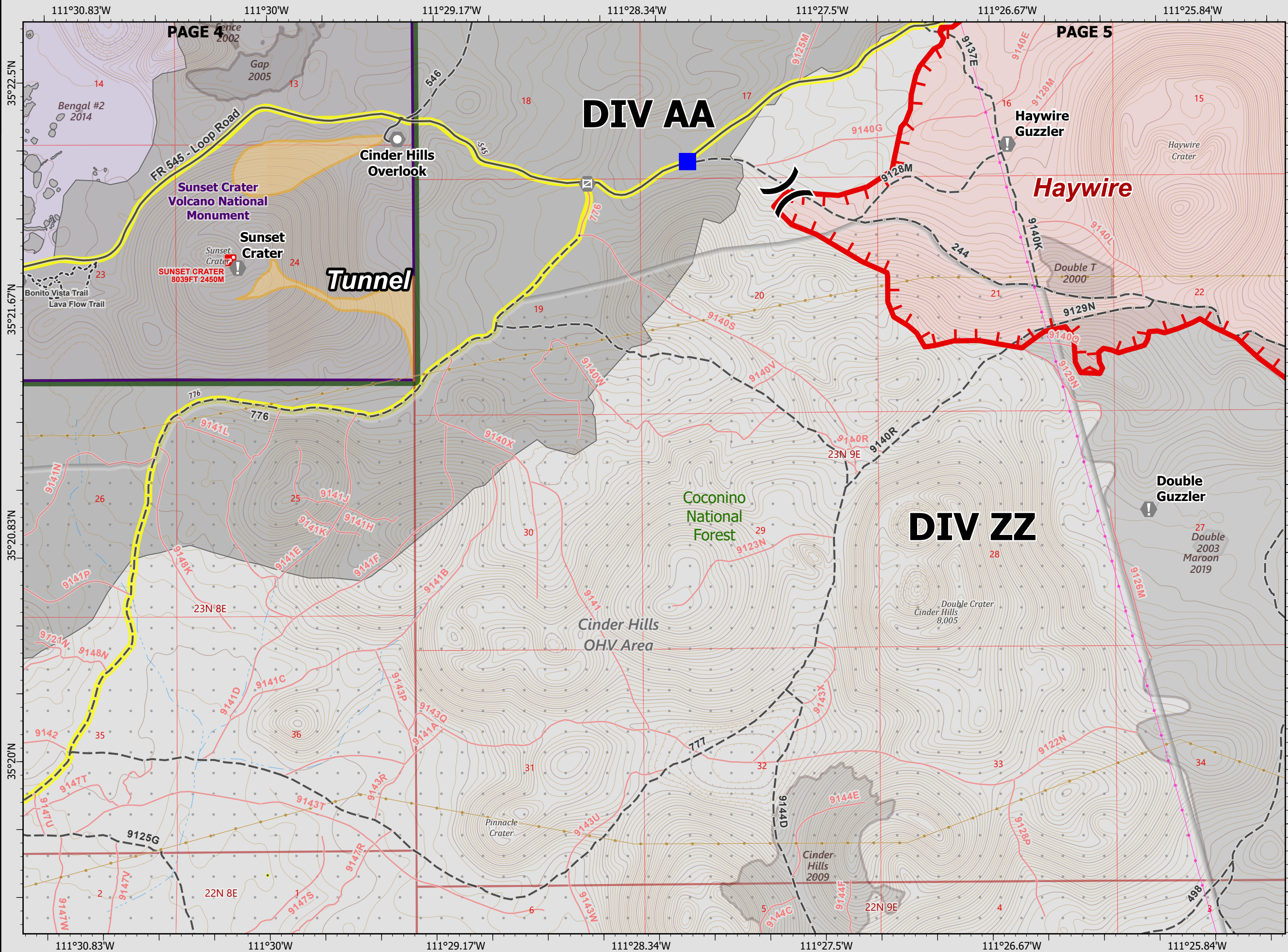
AZ-COF-000529
06/14/22 0600

PAGE 7
DIVISION ZZ/AA

- () Division Break
- Drop Point
- ⚠ Value at Risk
- ⊙ Landmark
- ⊞ Gate
- ▭ Wildfire Daily Fire Perimeter
- ▬ Uncontained
- ⊠ Point of Interest
- Power Lines
- Natural Gas Liquid Pipeline
- Local Road - Paved
- - - Local Road - Unpaved
- Closed Road
- - - NPS Trail
- ▭ Cinder Hills OHV Area
- Structure
- ▭ Preferred route up Sunset Crater
- ▭ Fire History
- ▭ NPS Unit Boundary
- ▭ Proclaimed Forest Boundary
- - - State Boundary
- ▭ County Boundary
- ▭ Highlighted Roads
- ▭ National Park Service (NPS)



Datum: North American 1983
CAIIMT15 Updated: 6/13/2022 2251

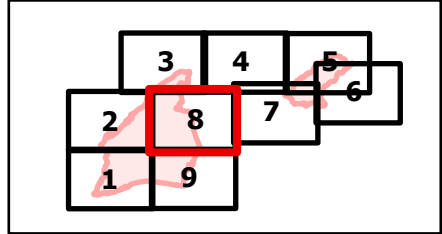


Pipeline

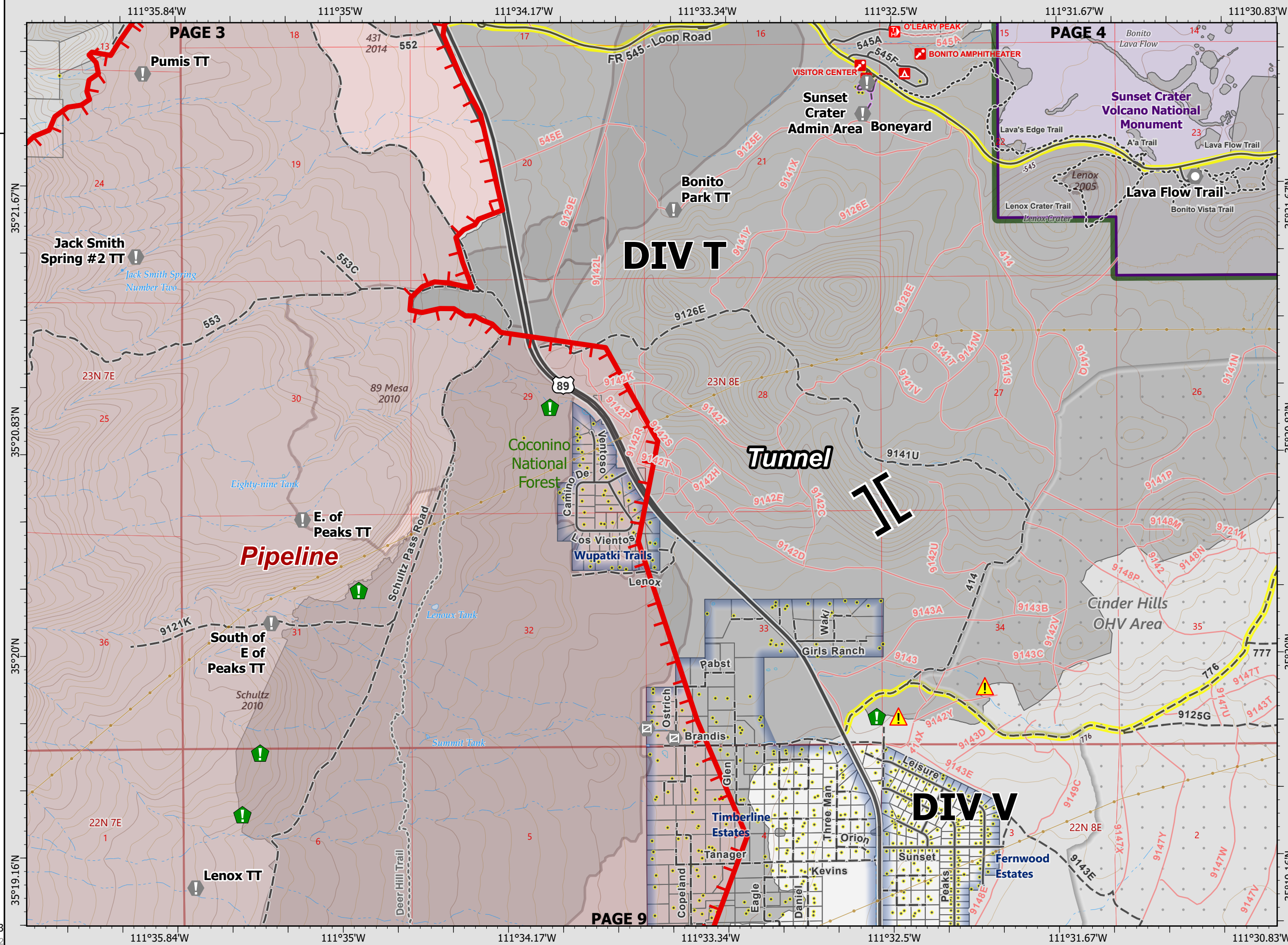
AZ-COF-000529
06/14/22 0600

PAGE 8
DIVISION ZZ/TV

- Branch Break
- Value at Risk
- Landmark
- Gate
- Resource Location
- Hazard
- Wildfire Daily Fire Perimeter
- Uncontained
- Campground; Group Campground
- Trailhead
- Interpretive Site
- Visitor Center
- Point of Interest
- Natural Gas Liquid Pipeline
- Secondary Road
- Local Road - Paved
- Local Road - Unpaved
- NPS Administrative Road - Paved
- NPS Administrative Road - Unpaved
- Closed Road
- NPS Trail
- Non-NPS Trail
- Cinder Hills OHV Area
- Structure
- Fire History
- NPS Unit Boundary
- Proclaimed Forest Boundary
- Flagstaff Neighborhoods
- Coconino County Parcels
- State Boundary
- County Boundary
- Highlighted Roads
- National Park Service (NPS) Private



Datum: North America 1983
CAIIMT15 Updated: 6/13/2022 2252

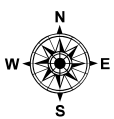
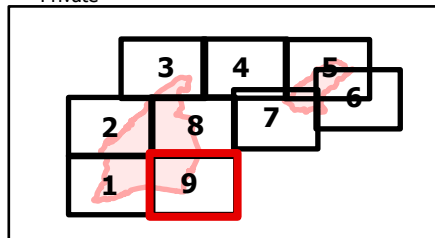


Pipeline

AZ-COF-000529
06/14/22 0600

PAGE 9
DIVISION V

- Other Property
- Division Break
- Value at Risk
- Landmark
- Gate
- Resource Location
- Repair Point
- Water Source
- Wildfire Daily Fire Perimeter
- Completed Dozer Line
- Completed Hand Line
- Completed Road as Line
- Access or Improved Road
- Fire Edge (Field Collection)
- Uncontained
- GNIS Populated Places Some
- Trailhead
- Oil and Natural Gas Pipelines
- Natural Gas Liquid Pipeline
- Secondary Road
- Local Road - Paved
- Local Road - Unpaved
- Closed Road
- Non-NPS Trail
- Cinder Hills OHV Area
- Structure
- Fire History
- Proclaimed Forest Boundary
- Flagstaff Neighborhoods
- Coconino County Parcels
- State Boundary
- County Boundary
- Highlighted Roads
- Private



0 0.13 0.25 0.5 Miles

Datum: North American 1983

CAIIMT15 Updated: 6/13/2022 2252

