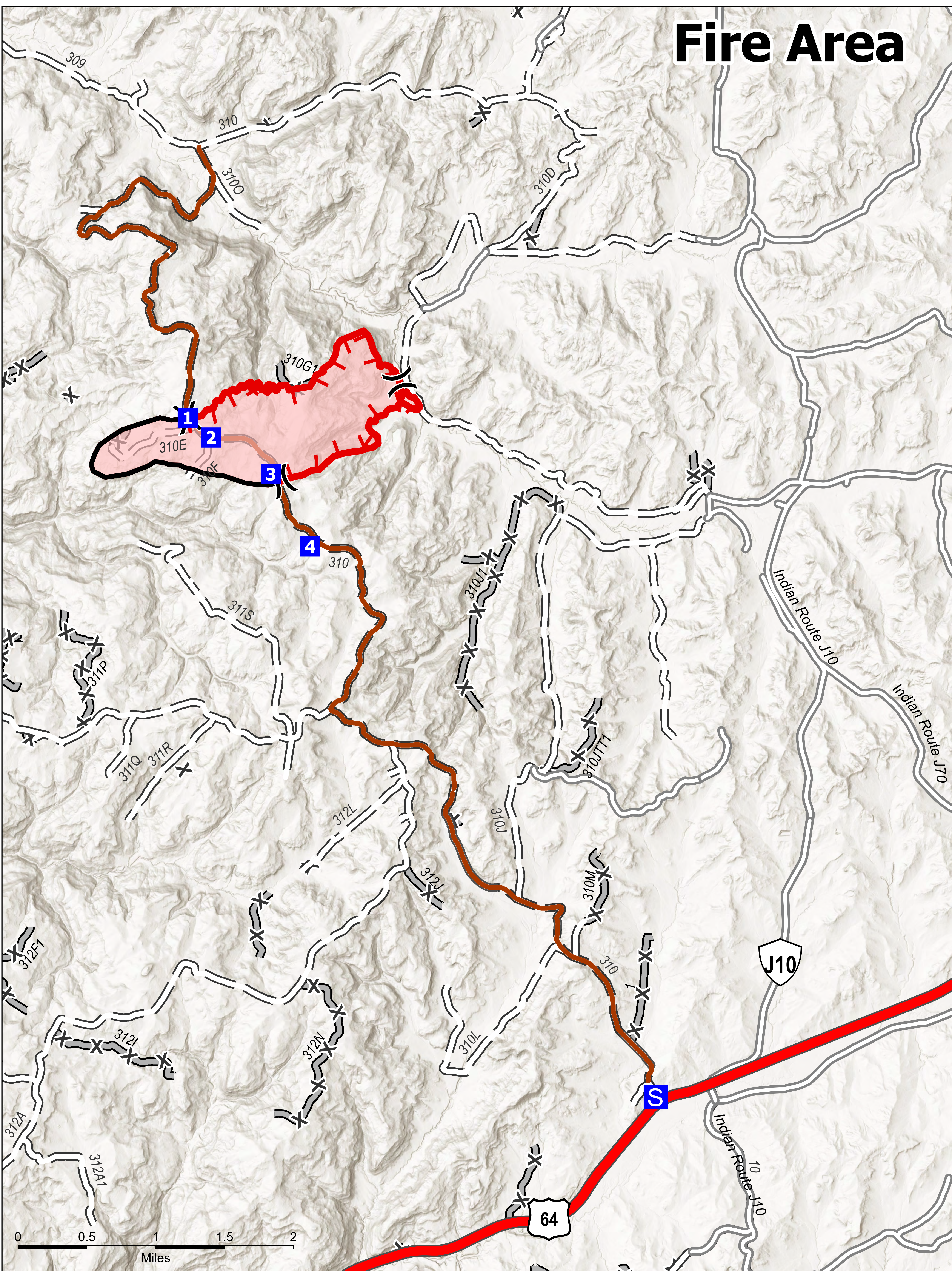
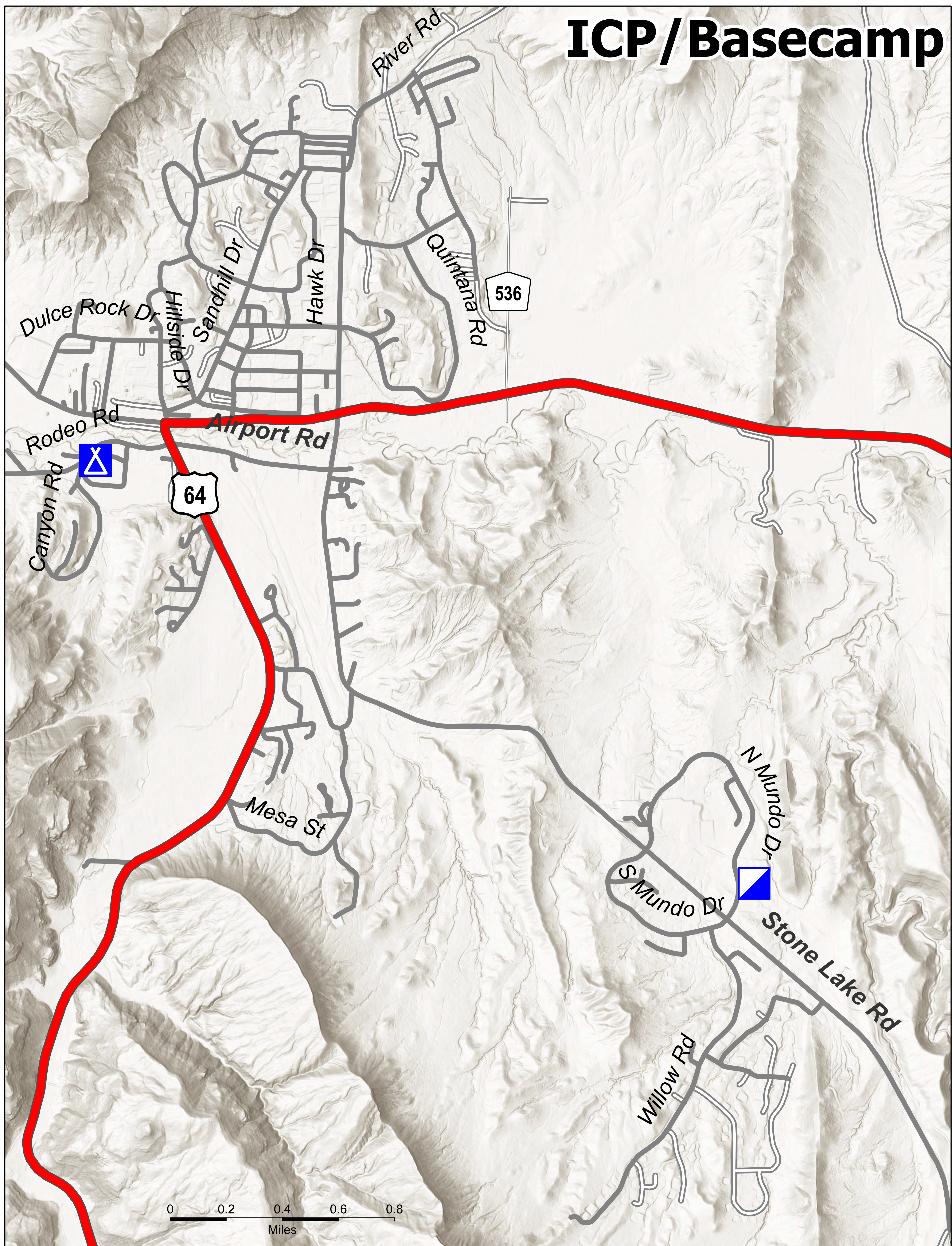


# Fire Area

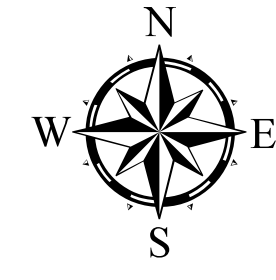


# ICP / Basecamp



## Transportation

American Mesa  
 NM-CAF-000342  
 756 acres  
 08/11/2023  
 Acres from IR on 8/6/2023 22:24



- X Division Break
- Drop Point
- Staging Area
- Contained

- ▬ Uncontained
- ▬ Wildfire Daily Fire Perimeter
- Access Road
- Dirt Road

- ~ Unimproved Road
- + Forest Service Roads Closed
- Incident Command Post
- Camp
- World Hillshade

