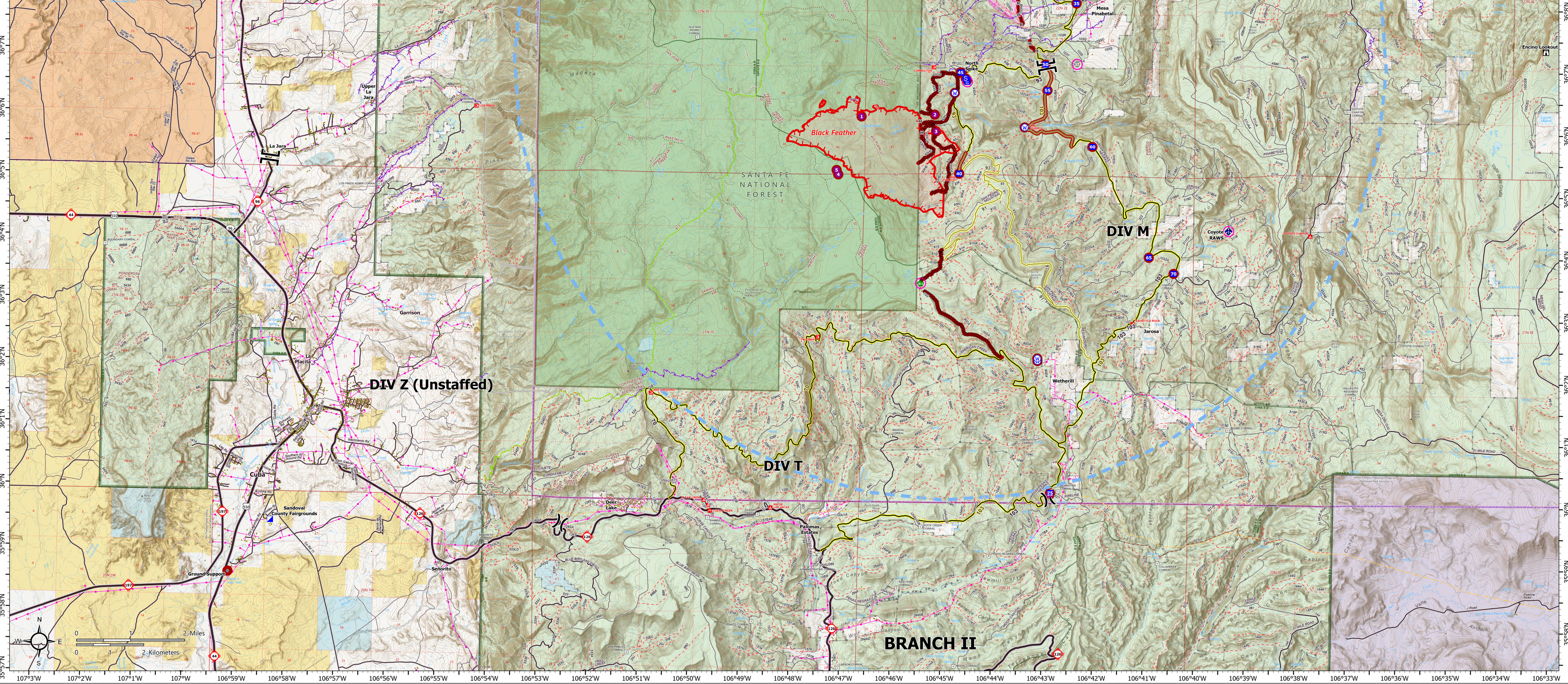


FC Point Type	Label	Repair Status	Repairs Needed	Repair Comments
Camp	North Spire	Repair Needed	Repairs Needed	
Drop Point	15	Repair Needed	Repairs Needed	
Drop Point	17	Repair Needed	Repairs Needed	
Drop Point	20	Repair Needed	Repairs Needed	
Drop Point	25	Repair Needed	Repairs Needed	
Drop Point	30	Repair Needed	Repairs Needed	
Drop Point	35	Repair Needed	Repairs Needed	
Drop Point	40	Repair Needed	Repairs Needed	
Drop Point	45	Repair Needed	Repairs Needed	
Drop Point	50	Repair Needed	Repairs Needed	
Drop Point	55	Repair Needed	Repairs Needed	
Drop Point	60	Repair Needed	Repairs Needed	
Drop Point	65	Repair Needed	Repairs Needed	
Drop Point	70	Repair Needed	Repairs Needed	
Drop Point	75	Repair Needed	Repairs Needed	
Fence - Cut/Damaged		In Use - Fire Management	Repair fence wires.	N/A
Gate		In Use - Fire Management		
Gate		In Use - Fire Management		
Helispot	1	Repair Needed		
Helispot	2	Repair Needed		
Helispot	3	Repair Needed		
Helispot	30	Repair Needed		
Helispot	4	Repair Needed		
Helispot	5	Repair Needed		
Helispot	Coyote HS	Repair Needed		
Mobile Weather Unit	Coyote RAWs	In Use - Fire Management		Flagged end of slash and chipping project
Other		In Use - Fire Management		
Other	Ground Support	Repair Needed	Chipping	
Staging Area		In Use - Fire Management		
Staging Area		Repair Needed		
Staging Area		Repair Needed		
Staging Area		Repair Needed		
Water Development or Draft Site		In Use - Fire Management		Place up to 60 yards of chips mid dumped between flagging
Water Development or Draft Site		In Use - Fire Management		
Water Source		Repair Needed		
Water Source		Repair Needed	None - equipment retrieval (pumpkin, hose, box)	
Water Source		Repair Needed		
Water Source		Repair Needed		

FC Line Type	Label	Repair Status	Repairs Needed	Repair Comments	Repair Priority
Completed Dozer Line		Repair Needed			Unknown
Completed Dozer Line		Repair Needed			Unknown
Completed Dozer Line		Repair Needed			Unknown
Completed Dozer Line		Repair Needed			Unknown
Completed Dozer Line		Repair Needed			Unknown
Completed Dozer Line		Repair Needed	Standard repair	Block access where tie in with road.	Unknown
Completed Dozer Line		Repair Needed			Unknown
Completed Hand Line		Repair Needed			Unknown
Completed Hand Line		Repair Needed			Unknown
Completed Road as Line		Repair Needed	Chipping		Unknown
Repair Line		Repair Needed			Unknown
Repair Line		Repair Needed			Unknown
Repair Line		Repair Needed	Material needs to be chipped. Advised to have chipper that can accommodate 24" materials and above.		Unknown



SUPPRESSION REPAIR

Black Feather NMSNF-000345 08/13 Day

2,198 acres at 08/11/2023 17:14hrs

<ul style="list-style-type: none"> In Use - Fire Management Repair Needed Repair Needed Helispot Division Break 	<ul style="list-style-type: none"> Branch Break Incident Command Post Drop Point Camp Staging Area 	<ul style="list-style-type: none"> Lookout Other Gate Water Development or Draft Site Resource Location Repair Point Fence - Cut/Damaged Mobile Weather Unit Water Source 	<ul style="list-style-type: none"> Completed Dozer Line Completed Hand Line Completed Road as Line Repair Line Temporary Flight Restriction Uncontained Wildfire Daily Fire Perimeter Fence 	<ul style="list-style-type: none"> Campground Picnic Site Interpretive Site Structure Corral Oil and Natural Gas Pipeline Powerline Acquicia 	<ul style="list-style-type: none"> Highway Local Connecting Road Paved Road Gravel Road Primitive Road Closed Roads 4WD Trail National Designated Trail County Boundary Boundary FS Roadless Area Bureau of Indian Affairs (BIA) 	<ul style="list-style-type: none"> Ranger District Boundary Federal Wilderness Boundary FS Roadless Area Bureau of Indian Affairs (BIA) Bureau of Land Management (BLM) National Park Service (NPS) Administrative FS State US Forest Service (USFS)
--	---	--	--	---	---	--



1:39,000 - SW2 GIS - 8/12/2023 22:51 - Acres from IR and GPS - North American 1983 Datum, LatLong Grid