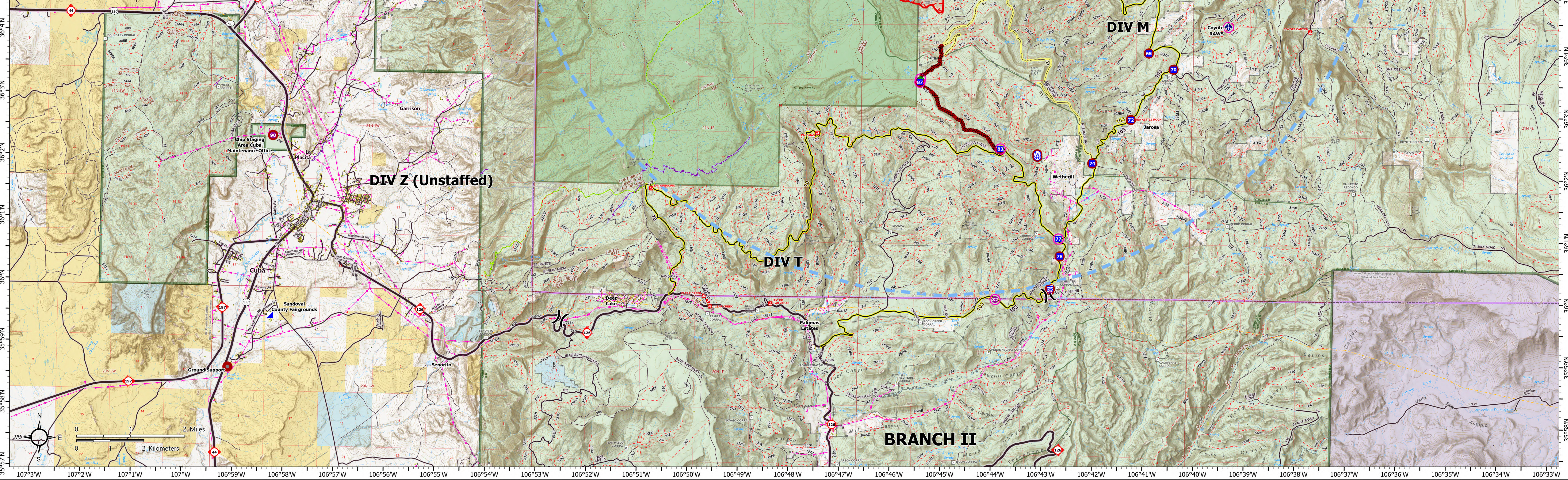


FC Point Type	Label	Repair Status	Repairs Needed	Repair Comments
Camp	North Spike	Repair Needed		
Drop Point	15	Repair Needed		
Drop Point	17	Repair Needed		
Drop Point	20	Repair Needed		
Drop Point	25	Repair Needed		
Drop Point	30	Repair Needed		
Drop Point	35	Repair Needed		
Drop Point	40	Repair Needed		
Drop Point	43	Repair Needed		
Drop Point	45	Repair Needed		
Drop Point	50	Repair Needed		
Drop Point	55	Repair Needed		
Drop Point	58	Repair Needed		
Drop Point	60	Repair Needed		
Drop Point	65	Repair Needed		
Drop Point	70	Repair Needed		
Drop Point	72	Repair Needed		
Drop Point	74	Repair Needed		
Drop Point	75	Repair Needed		
Drop Point	77	In Use - Fire Management		
Drop Point	78	Repair Needed		
Drop Point	80	Repair Needed		
Drop Point	83	In Use - Fire Management		
Drop Point	87	In Use - Fire Management		
Fence - Cut/Damaged		In Use - Fire Management	Repair fence wires.	N/A
Fence - Cut/Damaged		In Use - Fire Management		
Gate		In Use - Fire Management		
Gate		In Use - Fire Management		
Helispot	1	Repair Needed		
Helispot	2	Repair Needed		
Helispot	3	Repair Needed		
Helispot	30	Repair Needed		
Helispot	32	In Use - Fire Management		
Helispot	4	Repair Needed		
Helispot	5	Repair Needed		
Helispot	90	Repair Needed		
Helispot	Coyote HS	Repair Needed		
Mobile Weather Unit	Coyote RAWs	In Use - Fire Management		Flagged end of slash and chipping project.
Other		Repair Needed		
Repair Point		Repair Needed	Chipping	
Repair Point		Repair Needed		from berm to flag by road
Repair Point		Repair Needed		drop chips between flags
Repair Point		Repair Needed		place chips 1' flagging area in between roads
Repair Point		Repair Needed		Place up to 60 yards of chips end dumped between flagging
Repair Point	Chip Staging Area Cuba Maintenance Office	Repair Needed		Place chips in dirt pullout entering on right side
Water Development or Draft Site		In Use - Fire Management		
Water Development or Draft Site		In Use - Fire Management		
Water Development or Draft Site		In Use - Fire Management		
Water Source		Repair Needed		
Water Source		Repair Needed		
Water Source		Repair Needed		

FC Line Type	Label	Repair Status	Repairs Needed	Repair Comments
Completed Dozer Line		Repair Needed		
Completed Dozer Line		Repair Needed		
Completed Dozer Line		Repair Needed		
Completed Dozer Line		Repair Needed		
Completed Dozer Line		Repair Needed	Standard repair	Block access where tie in with road.
Completed Dozer Line		Repair Needed		
Completed Hand Line		Repair Needed		
Completed Hand Line		Repair Needed		
Completed Hand Line		Repair Needed		
Completed Mixed Construction Line		Repair Needed		
Completed Road as Line		Repair Needed	Chipping	
Completed Road as Line		Repair Needed	Chipping	
Completed Road as Line		Repair Needed	Chipping	
Completed Road as Line		Repair Needed	Chipping	
Completed Road as Line		Repair Needed	Chipping	
Repair Line		Repair Needed	Material needs to be chipped.	Advised to have chipper that can accommodate 24" materials and above.
Repair Line		Repair Needed	Chipping of material	
Repair Line		Repair Needed	Chipping of materials	
Repair Line		Repair Needed	Chipping of materials	
Repair Line		Repair Needed	Chipping of materials	
Repair Line		Repair Needed	Chipping of materials	
Road Repair		Repair Needed	Chipping of materials.	

Feature Category (Point Type)	Label	Property Status	Trackable ID	Serial Number	IncidentSupplyNumber	Lat WGS84	Long WGS84
Water Tank		Unknown				34° 06.537' N	106° 44.902' W



SUPPRESSION REPAIR

Black Feather NMSNF-000345 08/14 Day

2,198 acres at 08/11/2023 17:14hrs

<ul style="list-style-type: none"> In Use - Fire Management Repair Needed Water Tank Helispot 	<ul style="list-style-type: none"> Division Break Incident Command Post Drop Point Camp 	<ul style="list-style-type: none"> Lookout Gate Water Development or Draft Site Resource Location 	<ul style="list-style-type: none"> Completed Hand Line Construction Line Completed Road as Line Repair Line Road Repair 	<ul style="list-style-type: none"> Temporary Flight Restriction Uncontaminated Wildfire Daily Fire Perimeter Fence 	<ul style="list-style-type: none"> Campground Picnic Site Interpretive Site Structure Corral Oil and Natural Gas Pipeline Powerline Acquia Highway 	<ul style="list-style-type: none"> Local Connecting Road Forest Roads Access Route Local Road 4WD Paved Road Gravel Road Primitive Road Closed Roads Trail 	<ul style="list-style-type: none"> National Designated Trail County Boundary Administrative FS Boundary Ranger District Boundary Federal Wilderness Management (BLM) National Park Service (NPS) Bureau of Indian Affairs (BIA) 	<ul style="list-style-type: none"> Bureau of Land Management (BLM) National Park Service State US Forest Service (USFS) Private
---	---	---	--	---	--	--	--	--

