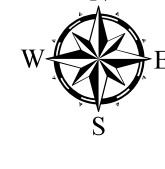


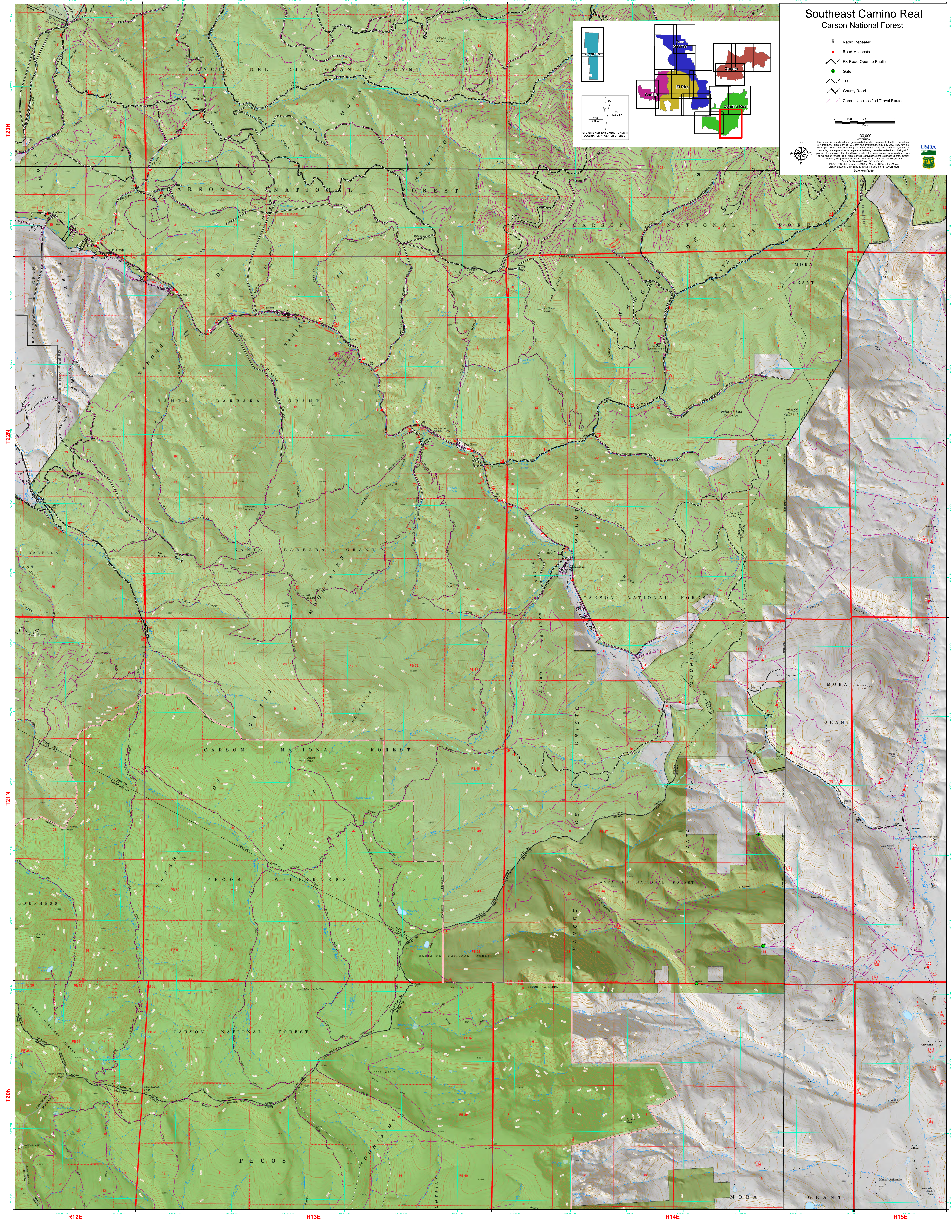
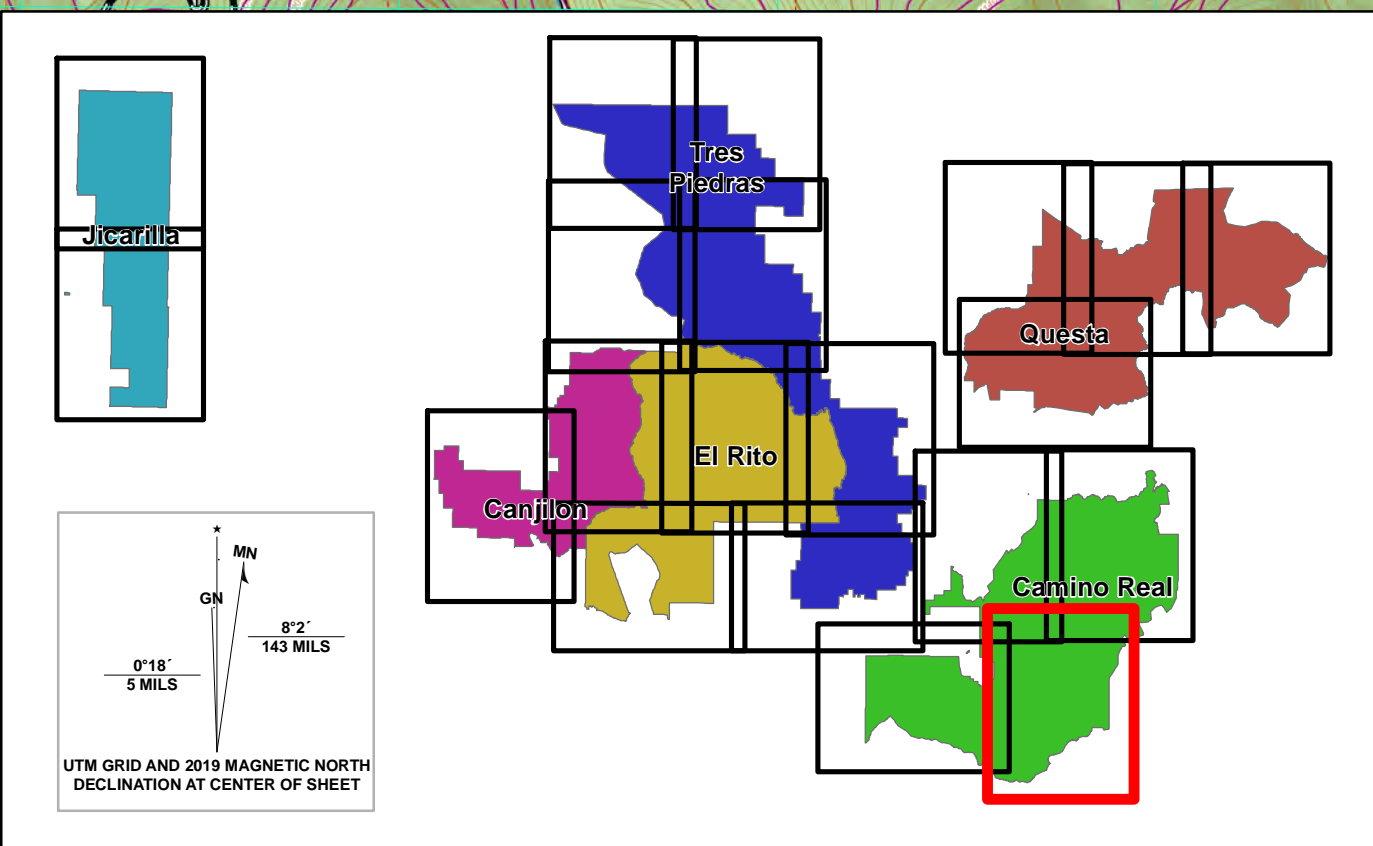
Southeast Camino Real Carson National Forest

- Radio Repeater
- Road Mileposts
- FS Road Open to Public
- Gate
- Trail
- County Road
- Carson Unclassified Travel Routes

1:30,000



This product is reproduced from geographic information systems provided by the U.S. Department of Agriculture, Forest Service. GIS data and product accuracy may vary. They may be used for non-commercial purposes only. The user assumes all liability for any use of this product. The user agrees to indemnify and hold the U.S. Department of Agriculture, Forest Service, harmless from any and all claims, damages, or liabilities, including reasonable attorneys' fees, arising from the use of this product. Contact: National Forest Inventory, Forest Service, 1205 Old Spanish Trail, Santa Fe, NM 87505. Data Prepared: UTM Zone 13 NAD83, Santa Fe NF GIS Data, Date: 01/10/2019



T23N
T22N
T21N
T20N

T23N
T22N
T21N
T20N

R12E

R13E

R14E

R15E