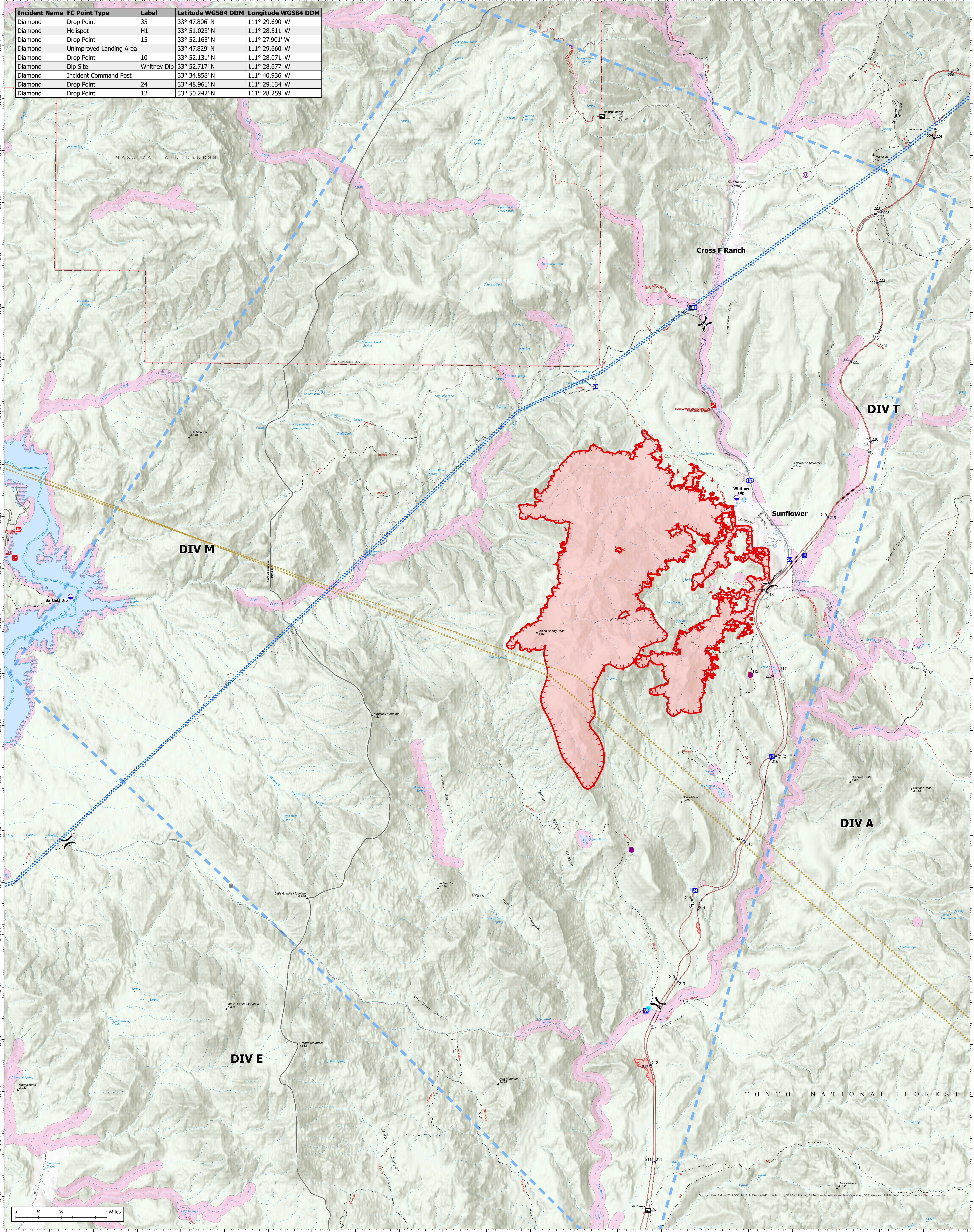
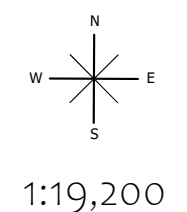


Incident Name	FC Point Type	Label	Latitude WGS84 DDM	Longitude WGS84 DDM
Diamond	Drop Point	35	33° 47.806' N	111° 29.690' W
Diamond	Helispot	H1	33° 51.023' N	111° 28.511' W
Diamond	Drop Point	15	33° 52.165' N	111° 27.901' W
Diamond	Unimproved Landing Area		33° 47.829' N	111° 29.660' W
Diamond	Drop Point	10	33° 52.131' N	111° 28.071' W
Diamond	Dip Site	Whitney Dip	33° 52.717' N	111° 28.677' W
Diamond	Incident Command Post		33° 34.858' N	111° 40.936' W
Diamond	Drop Point	24	33° 48.961' N	111° 29.134' W
Diamond	Drop Point	12	33° 50.242' N	111° 28.259' W



Air Operations

Diamond
AZ-TNF-001046
7/27/2023 Day
3,007 acres at 7/26/2023 @ 20:43 MST



- Dip Site
- Value at Risk
- Helispot
- Temporary Flight Restriction
- Unimproved Landing Area
- Division Break
- Drop Point
- Federal Wilderness Boundary
- Transmission Lines
- Military Training Route
- Uncontained
- Wildfire Daily Fire Perimeter
- County Boundary
- Forest Service Land
- FireRetardantEIS_Waterbody
- FireRetardantEIS_Streams
- FireRetardantEIS_TerrestrialDissolve



Southwest Team 1
20230909 09:00 MST