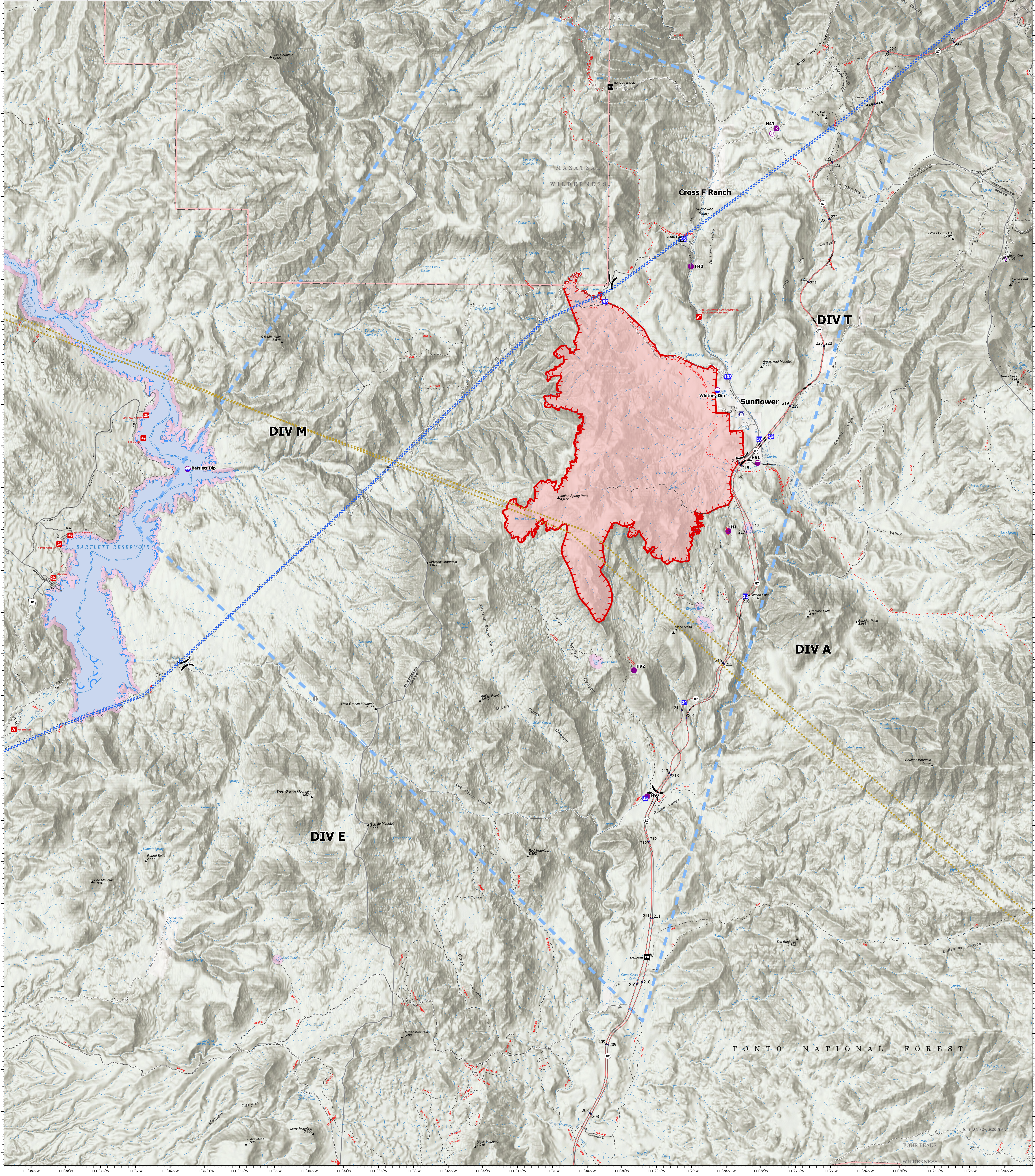
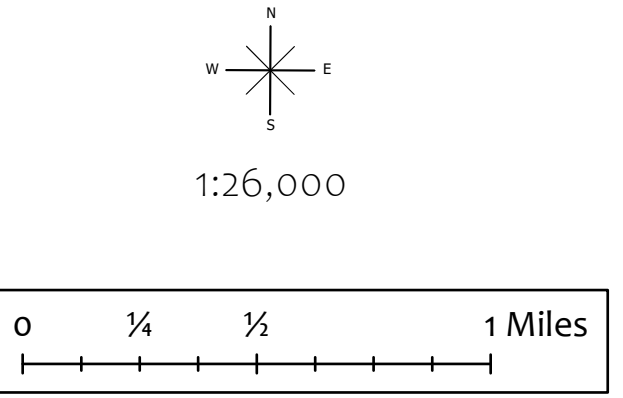


Incident Name	FC Point Type	Label	Latitude WGS84 DDM	Longitude WGS84 DDM	Comments
Diamond	Drop Point	15	33° 47.829' N	111° 29.667' W	
Diamond	Helispot	H1	33° 51.023' N	111° 28.511' W	Do not have a DP # identified yet
Diamond	Drop Point	15	33° 52.165' N	111° 27.901' W	
Diamond	Unimproved Landing Area		33° 47.829' N	111° 29.667' W	Type 3 only, 15-30 minutes of improvement
Diamond	Drop Point	10	33° 52.121' N	111° 28.071' W	
Diamond	Unimproved Landing Area		33° 55.807' N	111° 27.904' W	
Diamond	Unimproved Landing Area		33° 54.207' N	111° 29.066' W	Type 3
Diamond	Dip Site	Whitney Dip	33° 52.717' N	111° 28.677' W	
Diamond	Drop Point	24	33° 48.561' N	111° 29.134' W	
Diamond	Drop Point	12	33° 50.242' N	111° 28.259' W	
Diamond	Dip Site	Bartlett Dip	33° 51.737' N	111° 36.305' W	
Diamond	Drop Point	95	33° 54.534' N	111° 29.173' W	
Diamond	Drop Point	85	33° 53.775' N	111° 30.801' W	
Diamond	Drop Point	103	33° 52.881' N	111° 28.527' W	
Diamond	Drop Point		33° 55.869' N	111° 27.843' W	
Diamond	Helispot	H92	33° 49.345' N	111° 29.863' W	Saddle, gravel rd, slight dust, 2 way departure- type 3 can fit
Diamond	Helispot	H40	33° 54.207' N	111° 29.068' W	in a paved pull out- type 3 can fit
Diamond	Helispot	H43	33° 55.869' N	111° 27.843' W	dusty- type 2 can fit
Diamond	Helispot	H51	33° 51.847' N	111° 28.095' W	dusty east of hwy 87, - type 2 can fit
Diamond	Helispot	H92	33° 47.829' N	111° 29.667' W	in a wash, dusty-type 2 can fit



# Air Operations

Diamond  
AZ-TNF-001046  
7/27/2023 Day  
4635 acres at 7/27/2023 @ 21:23 MST  
Acres from IR and GPS, North American 1983 Datum, LatLong Grid



- AZ FAA Obstacles
- Dip Site
- Helispot
- Unimproved Landing Area
- Division Break
- Drop Point
- Value at Risk
- Temporary Flight Restriction
- Uncontained
- Wildfire Daily Fire Perimeter
- County Boundary
- Forest Service Land
- Federal Wilderness Boundary
- Transmission Lines
- Military Training Route
- FireRetardant/IS/Waterbody

