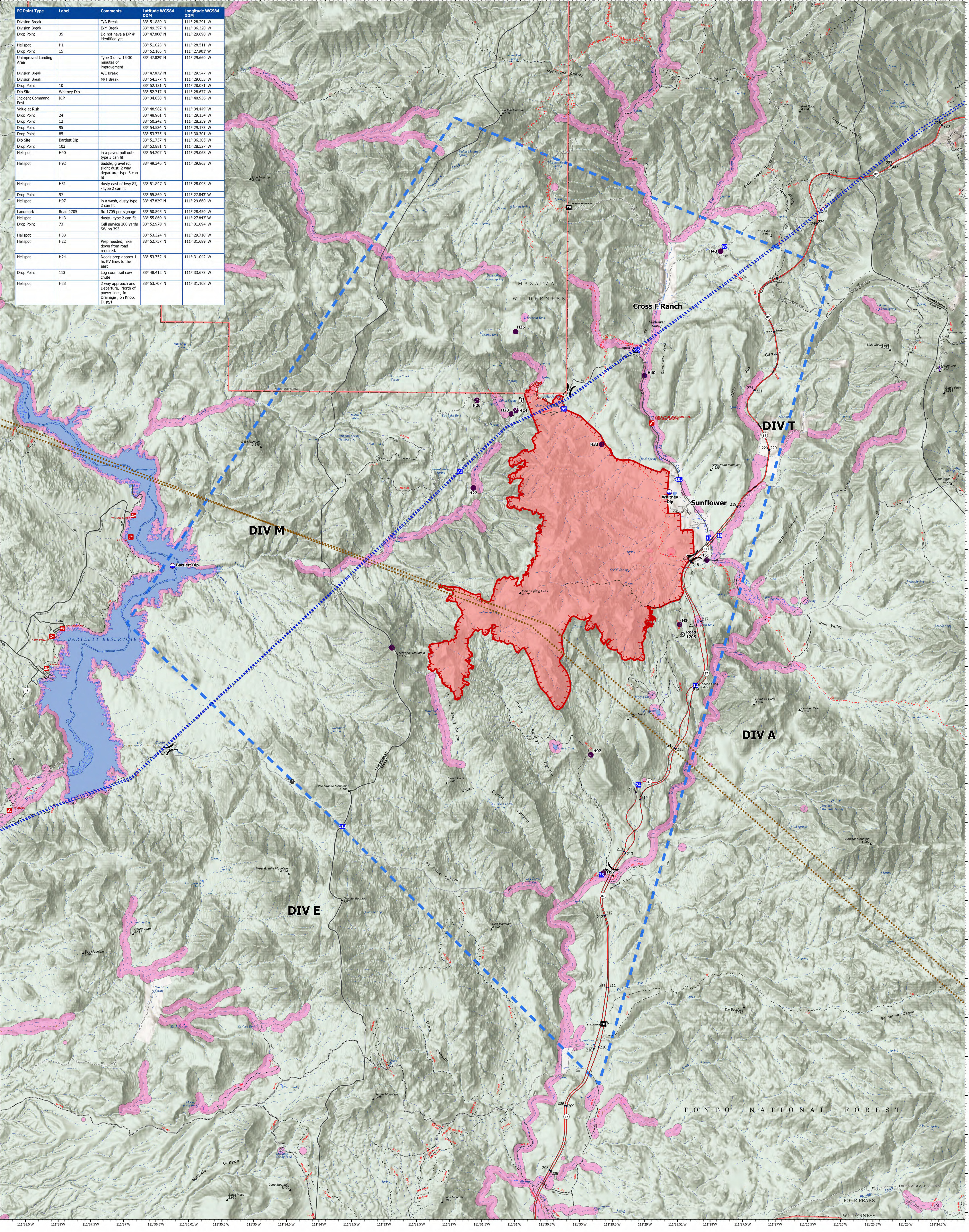
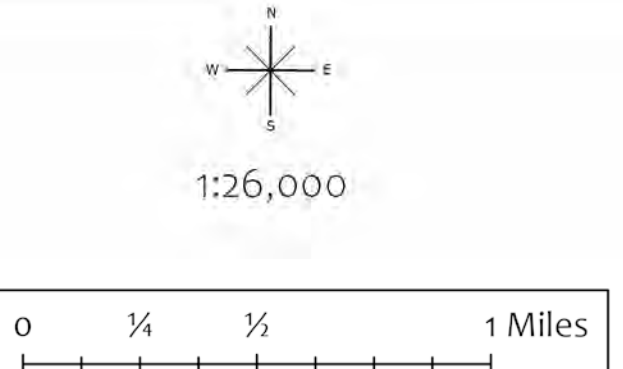


FC Point Type	Label	Comments	Latitude WGS84 DDM	Longitude WGS84 DDM
Division Break		T/A Break	33° 51.889' N	111° 28.291' W
Division Break		E/M Break	33° 49.397' N	111° 36.320' W
Drop Point	35	Do not have a DP # identified yet	33° 47.806' N	111° 29.690' W
Helispot	H1		33° 51.023' N	111° 28.511' W
Drop Point	15		33° 52.165' N	111° 27.901' W
Unimproved Landing Area		Type 3 only, 15-30 minutes of improvement	33° 47.829' N	111° 29.660' W
Division Break		A/E Break	33° 47.872' N	111° 29.547' W
Division Break		M/T Break	33° 54.377' N	111° 29.053' W
Drop Point	10		33° 52.131' N	111° 28.071' W
Dip Site	Whitney Dip		33° 52.717' N	111° 28.677' W
Incident Command Post	ICP		33° 54.858' N	111° 40.936' W
Value at Risk			33° 48.982' N	111° 34.449' W
Drop Point	24		33° 48.961' N	111° 29.134' W
Drop Point	12		33° 50.242' N	111° 28.359' W
Drop Point	95		33° 54.534' N	111° 29.173' W
Drop Point	85		33° 53.775' N	111° 30.301' W
Dip Site	Bartlett Dip		33° 51.737' N	111° 36.305' W
Drop Point	103		33° 52.881' N	111° 28.527' W
Helispot	H40	in a paved pull out-type 3 can fit	33° 54.207' N	111° 29.068' W
Helispot	H92	Saddle, gravel rd, slight dust, 2 way departure-type 3 can fit	33° 49.345' N	111° 29.863' W
Helispot	H51	dusty east of hwy 87, - type 2 can fit	33° 51.847' N	111° 28.095' W
Drop Point	97		33° 55.869' N	111° 27.843' W
Helispot	H97	in a wash, dusty-type 2 can fit	33° 47.829' N	111° 29.660' W
Landmark	Road 1705	Rd 1705 per signage	33° 50.895' N	111° 28.459' W
Helispot	H43	dusty, type 2 can fit	33° 55.869' N	111° 27.843' W
Drop Point	73	Cell service 200 yards SW on 393	33° 52.970' N	111° 31.894' W
Helispot	H33		33° 53.324' N	111° 29.718' W
Helispot	H22	Prep needed, hike down from road required.	33° 52.757' N	111° 31.689' W
Helispot	H24	Needs prep approx 1 hr, W lines to the east	33° 53.752' N	111° 31.042' W
Drop Point	113	Log coral trail cow chute	33° 48.412' N	111° 33.673' W
Helispot	H23	2 way approach and Departure, North of power lines, In Drainage - on Knob, Dusty1	33° 53.707' N	111° 31.108' W



Air Operations

Diamond
AZ-TNF-001046
7/30/2023 Day
5151 acres as of 7/29/2023 @ 22:40 MST
Acres from IR and GPS, North American 1983 Datum, LatLong Grid



- ▲ AZ FAA Obstacles
- Dip Site
- ⊙ Helispot
- ⊕ Unimproved Landing Area
- () Division Break
- Drop Point
- ⚠ Lookout
- ⚡ Value at Risk
- ⦿ Repeater
- ⬭ Temporary Flight Restriction
- ⚠ Uncontained
- ⚡ Wildfire Daily Fire Perimeter
- ⦿ Landmark
- ⦿ County Boundary
- ⦿ Forest Service Land
- ⦿ Federal Wilderness Boundary
- ⦿ Transmission Lines
- ⦿ Military Training Route
- ⦿ Fire Retardant/Waterbody

