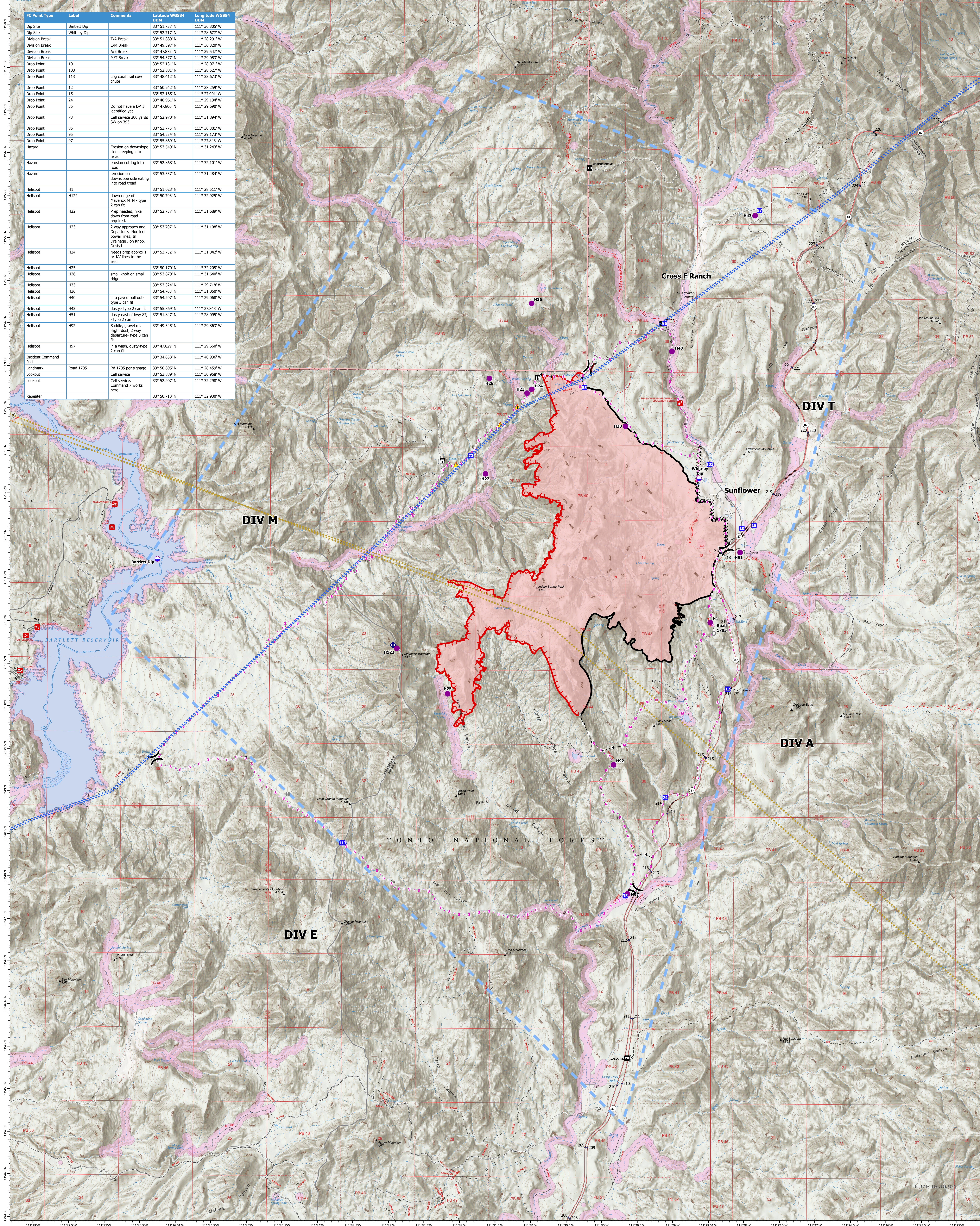
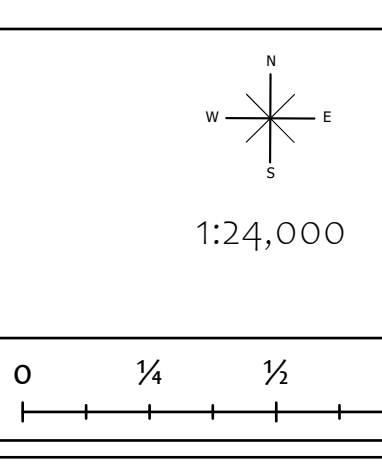


FC Point Type	Label	Comments	Latitude WGS84 DDM	Longitude WGS84 DDM
Dip Site	Bartlett Dip		33° 51.737' N	111° 36.205' W
Dip Site	Whitney Dip		33° 52.717' N	111° 28.677' W
Division Break	T/A Break		33° 51.889' N	111° 28.291' W
Division Break	E/M Break		33° 49.397' N	111° 36.320' W
Division Break	A/E Break		33° 47.872' N	111° 29.547' W
Division Break	M/T Break		33° 54.377' N	111° 29.053' W
Drop Point	10		33° 52.131' N	111° 28.071' W
Drop Point	103		33° 52.881' N	111° 28.527' W
Drop Point	113	Log coal trail cow chute	33° 48.412' N	111° 33.673' W
Drop Point	12		33° 50.242' N	111° 28.259' W
Drop Point	15		33° 52.165' N	111° 27.901' W
Drop Point	24		33° 48.861' N	111° 29.134' W
Drop Point	35	Do not have a DP # identified yet	33° 47.806' N	111° 29.690' W
Drop Point	73	Cell service 200 yards SW on 393	33° 52.970' N	111° 31.894' W
Drop Point	85		33° 53.775' N	111° 30.301' W
Drop Point	95		33° 54.534' N	111° 29.173' W
Drop Point	97		33° 55.869' N	111° 27.843' W
Hazard		Erosion on downslope side creeping into tread	33° 53.549' N	111° 31.243' W
Hazard		erosion cutting into road	33° 52.868' N	111° 32.101' W
Hazard		erosion on downslope side eating into road tread	33° 53.337' N	111° 31.484' W
Helispot	H1		33° 51.023' N	111° 28.511' W
Helispot	H122	down ridge of Maverick MTN - type 2 can fit	33° 50.703' N	111° 32.925' W
Helispot	H22	Prep needed, hike down from road required.	33° 52.757' N	111° 31.689' W
Helispot	H23	2 way approach and Departure, North of power lines, In Drainage, on Knob, Dusty!	33° 53.707' N	111° 31.108' W
Helispot	H24	Needs prep approx 1 hr, AV lines to the east	33° 53.752' N	111° 31.042' W
Helispot	H25		33° 50.170' N	111° 32.205' W
Helispot	H26	small knob on small ridge	33° 53.879' N	111° 31.640' W
Helispot	H33		33° 53.324' N	111° 29.718' W
Helispot	H36		33° 54.763' N	111° 31.050' W
Helispot	H40	in a paved pull out-type 2 can fit	33° 54.207' N	111° 29.068' W
Helispot	H43	dusty - type 2 can fit	33° 55.869' N	111° 27.843' W
Helispot	H51	dusty east of hwy 87, - type 2 can fit	33° 51.847' N	111° 28.095' W
Helispot	H92	Saddle, gravel rd, slight dust, 2 way departure-type 3 can fit	33° 49.345' N	111° 29.863' W
Helispot	H97	in a wash, dusty-type 2 can fit	33° 47.829' N	111° 29.660' W
Incident Command Post			33° 34.858' N	111° 40.936' W
Landmark	Road 1705	Rd 1705 per signage	33° 50.895' N	111° 28.459' W
Lookout		Cell service	33° 53.889' N	111° 30.958' W
Lookout		Cell service, Command 7 works here.	33° 52.907' N	111° 32.298' W
Repeater			33° 50.710' N	111° 32.930' W



# Air Operations

Diamond  
AZ-TNF-001046  
7/31/2023 Day  
5101 acres at 7/30/2023 @ 17:22 MST  
Acres from IR and GPS, North American 1983 Datum, LatLong Grid



- Dip Site
- Helispot
- Unimproved Landing Area
- Division Break
- Drop Point
- Lookout
- Value at Risk
- Landmark
- Repeater
- Hazard
- Completed Fuel Break
- Completed Hand Line
- Planned Mixed Construction Line
- Planned Road as Line
- Planned Secondary Line
- Temporary Flight Restriction
- Contained
- Uncontained
- Wildfire Daily Fire Perimeter
- County Boundary
- Forest Service Land
- Federal Wilderness Boundary
- Transmission Lines
- Military Training Route
- FireRetardant/EIS\_Waterbody

