


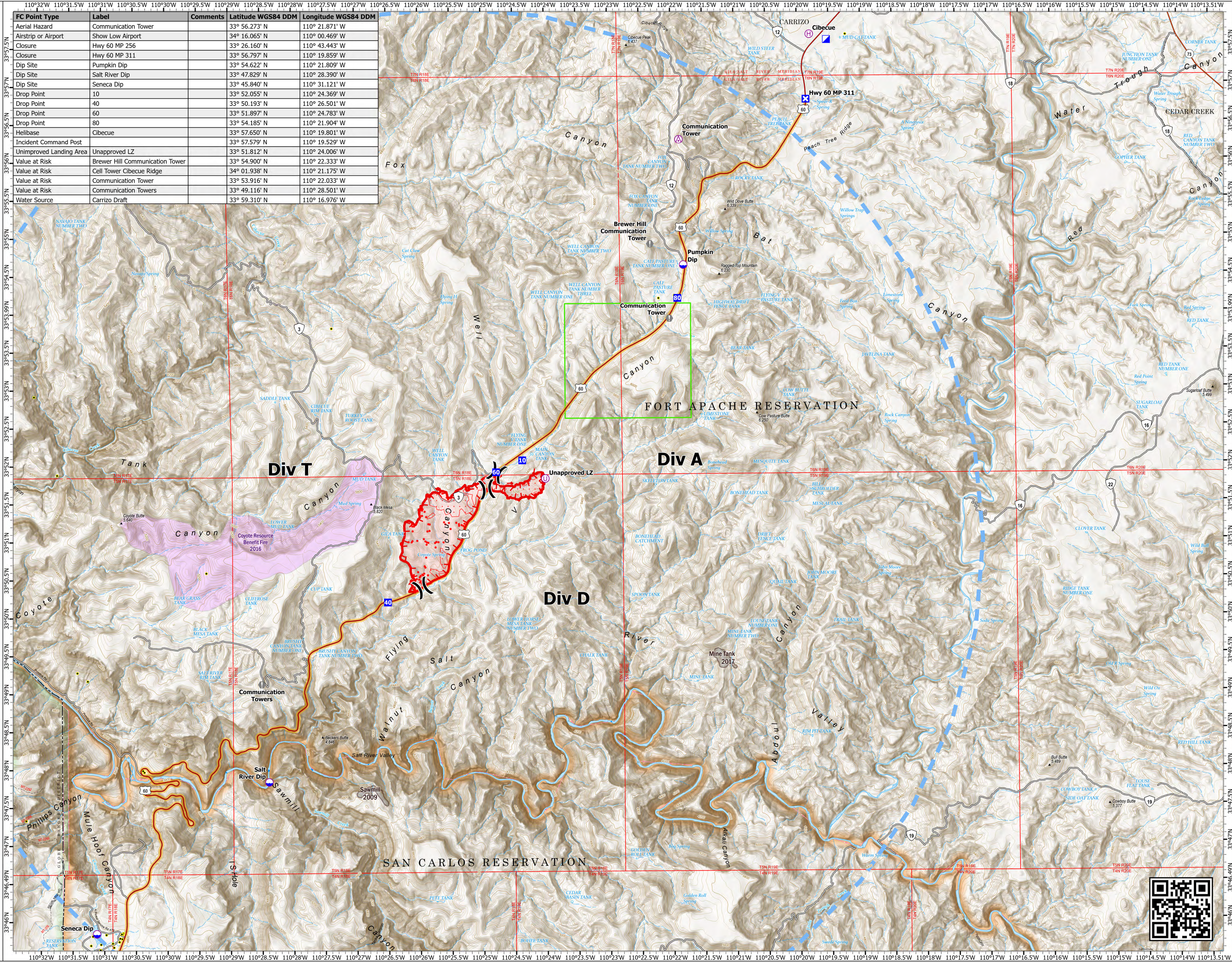


# Operations

Flying V  
AZ-FTA-000410  
7/8/2023 Day

831 acres at 7/7/2023 2116 hr



-  Aerial Hazard
-  Dip Site
-  Helibase
-  Unimproved Landing Area
-  Division Break
-  Incident Command Post
-  Drop Point
-  Closure
-  Value at Risk
-  IR Isolated Heat Source
-  Temporary Flight Restriction
-  Uncontained
-  IR Heat Perimeter
-  IR Scattered Heat
-  Wildfire Daily Fire Perimeter
-  Structure
-  Primary Highway
-  Secondary Highway
-  Road, Unspecified
-  Road, Dirt
-  Trail
-  Road Closure
-  USFS Administrative Forest
-  USFS Ranger District
-  Oak Monitoring Vicinity
-  Fire History
-  Fuel Treatment History - Fire Use Fire
-  Bureau of Indian Affairs (BIA)
-  US Forest Service (USFS)



FC Point Type	Label	Comments	Latitude WGS84 DDM	Longitude WGS84 DDM
Aerial Hazard	Communication Tower		33° 56.273' N	110° 21.871' W
Airstrip or Airport	Show Low Airport		34° 16.065' N	110° 00.469' W
Closure	Hwy 60 MP 256		33° 26.160' N	110° 43.443' W
Closure	Hwy 60 MP 311		33° 56.797' N	110° 19.859' W
Dip Site	Pumpkin Dip		33° 54.622' N	110° 21.809' W
Dip Site	Salt River Dip		33° 47.829' N	110° 28.390' W
Dip Site	Seneca Dip		33° 45.840' N	110° 31.121' W
Drop Point	10		33° 52.055' N	110° 24.369' W
Drop Point	40		33° 50.193' N	110° 26.501' W
Drop Point	60		33° 51.997' N	110° 24.783' W
Drop Point	80		33° 54.185' N	110° 21.904' W
Helibase	Cibecue		33° 57.650' N	110° 19.801' W
Incident Command Post			33° 57.579' N	110° 19.529' W
Unimproved Landing Area	Unapproved LZ		33° 51.812' N	110° 24.006' W
Value at Risk	Brewer Hill Communication Tower		33° 54.900' N	110° 22.333' W
Value at Risk	Cell Tower Cibecue Ridge		34° 01.938' N	110° 21.175' W
Value at Risk	Communication Tower		33° 53.916' N	110° 22.033' W
Value at Risk	Communication Towers		33° 49.116' N	110° 28.501' W
Water Source	Carrizo Draft		33° 59.310' N	110° 16.976' W



WHITE MOUNTAIN ZONE  
TYPE 3 INCIDENT MANAGEMENT TEAM

0 1 2  
Miles

