

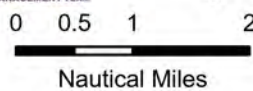
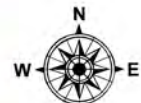
Pilot Flying V

AZ-FTA-000410

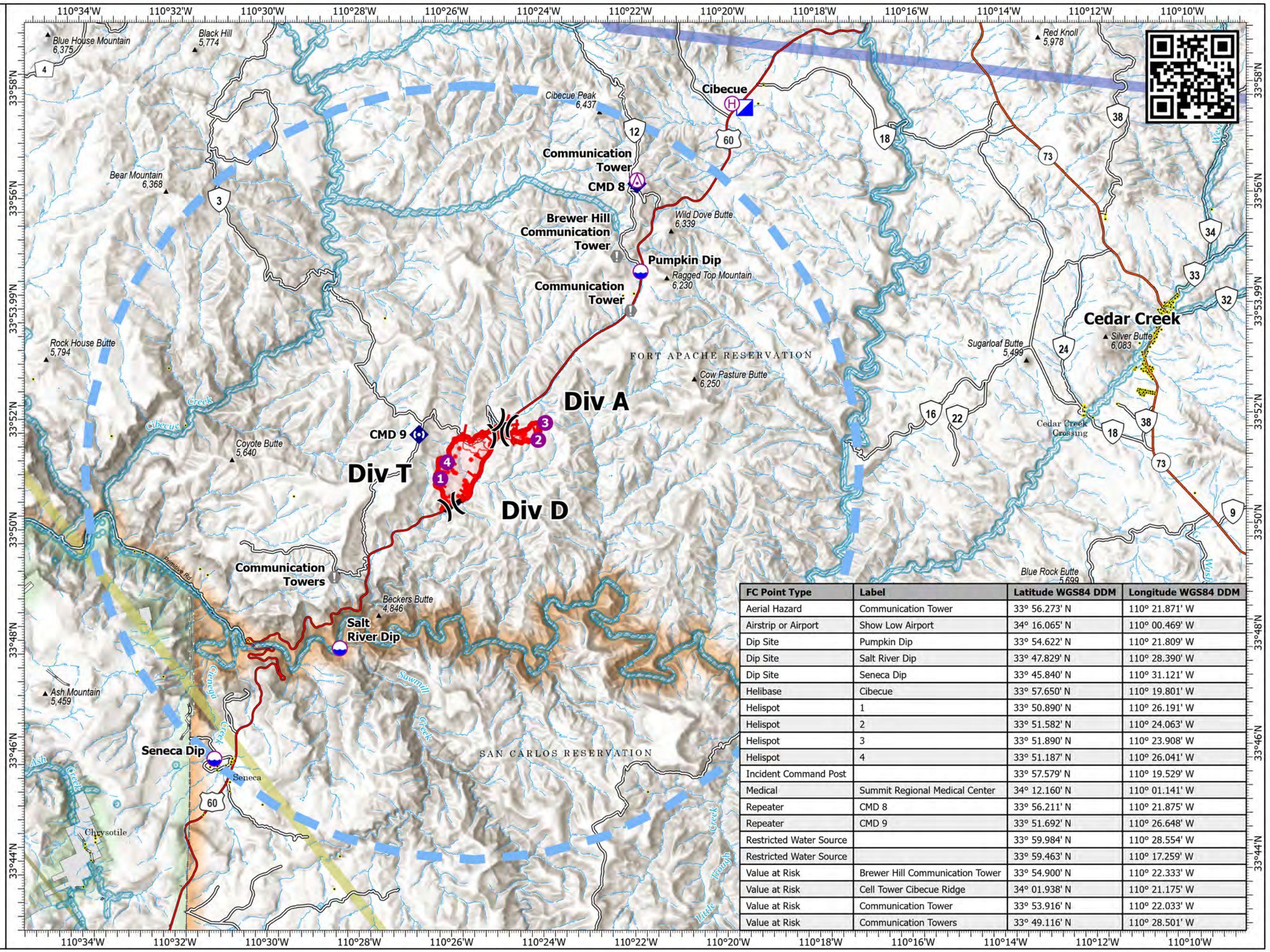
7/9/2023 Day

831 acres at 7/8/2023 2141 hr

- Aerial Hazard
- Dip Site
- Helispot
- Helibase
- Division Break
- Incident Command Post
- Value at Risk
- Repeater
- IR Isolated Heat Source
- Possible IR Heat Source
- Temporary Flight Restriction
- Contained
- Uncontained
- IR Heat Perimeter
- IR Scattered Heat
- Wildfire Daily Fire Perimeter
- Structure
- Primary Highway
- Secondary Highway
- Road, Unspecified
- Road, Paved
- Road, Dirt
- Aerial Fire Retardant Avoidance
- Instrument Route Overlay Line
- Visual Route Overlay Line
- Visual Route Line
- Bureau of Indian Affairs (BIA)
- US Forest Service (USFS)
- Private



1:120,000 | WMZ Type 3 IMT GISS | 7/9/2023 0440
 Acres from IR & GPS
 North American 1983 Datum, LatLong Grid



| FC Point Type | Label | Latitude WGS84 DDM | Longitude WGS84 DDM |
|-------------------------|---------------------------------|--------------------|---------------------|
| Aerial Hazard | Communication Tower | 33° 56.273' N | 110° 21.871' W |
| Airstrip or Airport | Show Low Airport | 34° 16.065' N | 110° 00.469' W |
| Dip Site | Pumpkin Dip | 33° 54.622' N | 110° 21.809' W |
| Dip Site | Salt River Dip | 33° 47.829' N | 110° 28.390' W |
| Dip Site | Seneca Dip | 33° 45.840' N | 110° 31.121' W |
| Helibase | Cibecue | 33° 57.650' N | 110° 19.801' W |
| Helispot | 1 | 33° 50.890' N | 110° 26.191' W |
| Helispot | 2 | 33° 51.582' N | 110° 24.063' W |
| Helispot | 3 | 33° 51.890' N | 110° 23.908' W |
| Helispot | 4 | 33° 51.187' N | 110° 26.041' W |
| Incident Command Post | | 33° 57.579' N | 110° 19.529' W |
| Medical | Summit Regional Medical Center | 34° 12.160' N | 110° 01.141' W |
| Repeater | CMD 8 | 33° 56.211' N | 110° 21.875' W |
| Repeater | CMD 9 | 33° 51.692' N | 110° 26.648' W |
| Restricted Water Source | | 33° 59.984' N | 110° 28.554' W |
| Restricted Water Source | | 33° 59.463' N | 110° 17.259' W |
| Value at Risk | Brewer Hill Communication Tower | 33° 54.900' N | 110° 22.333' W |
| Value at Risk | Cell Tower Cibecue Ridge | 34° 01.938' N | 110° 21.175' W |
| Value at Risk | Communication Tower | 33° 53.916' N | 110° 22.033' W |
| Value at Risk | Communication Towers | 33° 49.116' N | 110° 28.501' W |