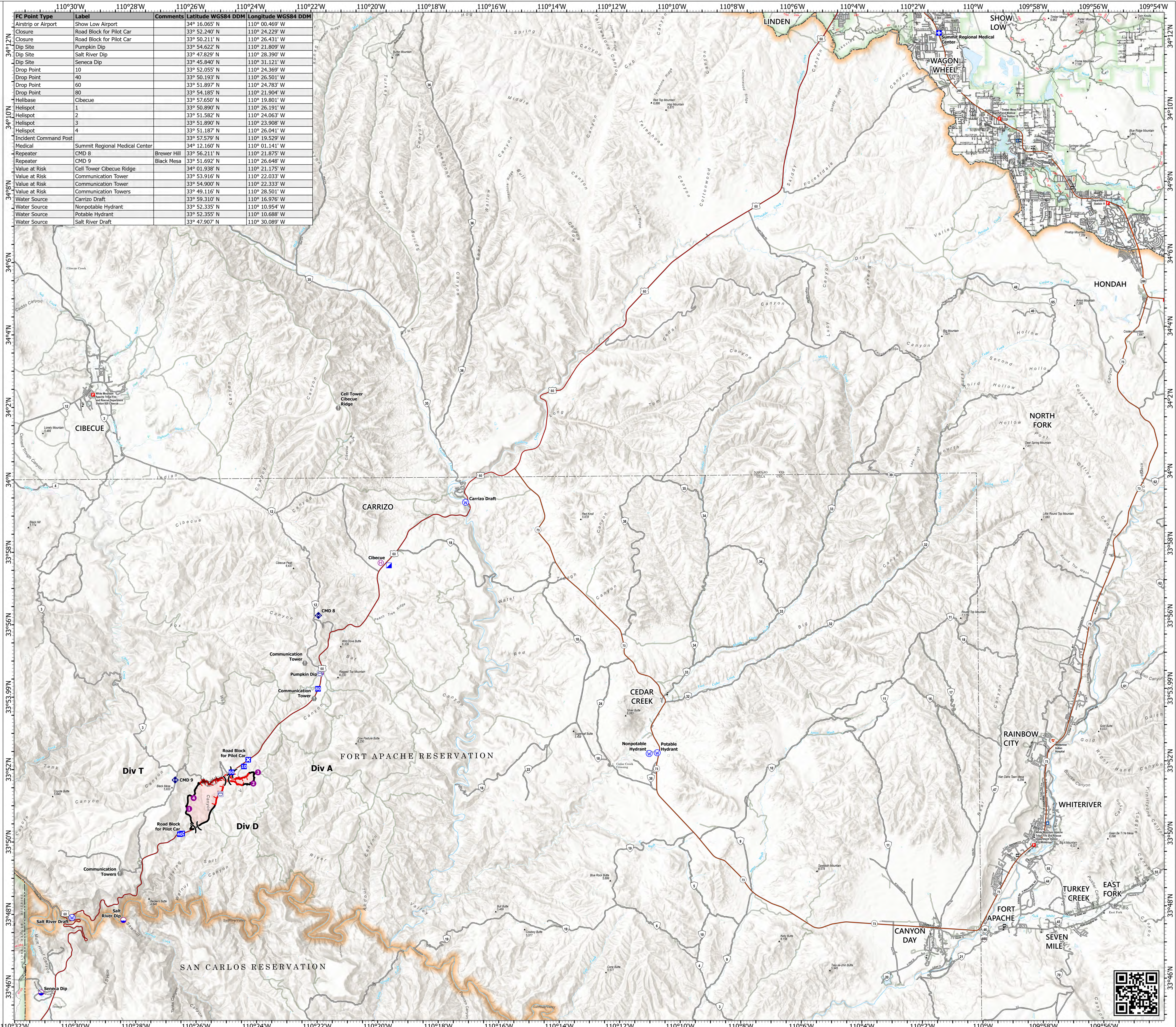


Transportation

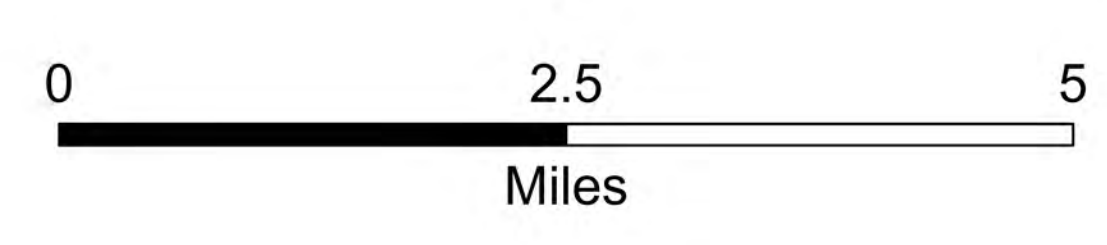
Flying V
AZ-FTA-000410
7/11/2023 Day

831 acres at 7/8/2023 2141 hr



FC Point Type	Label	Comments	Latitude WGS84 DDM	Longitude WGS84 DDM
Airstrip or Airport	Show Low Airport		34° 16.065' N	110° 00.469' W
Closure	Road Block for Pilot Car		33° 52.240' N	110° 24.229' W
Closure	Road Block for Pilot Car		33° 50.211' N	110° 26.431' W
Dip Site	Pumpkin Dip		33° 54.622' N	110° 21.809' W
Dip Site	Salt River Dip		33° 47.829' N	110° 28.390' W
Dip Site	Seneca Dip		33° 45.840' N	110° 31.121' W
Drop Point	10		33° 52.055' N	110° 24.369' W
Drop Point	40		33° 50.193' N	110° 26.501' W
Drop Point	60		33° 51.897' N	110° 24.783' W
Drop Point	80		33° 54.185' N	110° 21.904' W
Helibase	Cibecue		33° 57.650' N	110° 19.801' W
Helispot	1		33° 50.890' N	110° 26.191' W
Helispot	2		33° 51.582' N	110° 24.063' W
Helispot	3		33° 51.890' N	110° 23.908' W
Helispot	4		33° 51.187' N	110° 26.041' W
Incident Command Post	Summit Regional Medical Center		33° 57.579' N	110° 19.529' W
Medical	Summit Regional Medical Center		34° 12.160' N	110° 01.141' W
Repeater	CMD 8	Brewer Hill	33° 56.211' N	110° 21.875' W
Repeater	CMD 9	Black Mesa	33° 51.692' N	110° 26.648' W
Value at Risk	Cell Tower Cibecue Ridge		34° 01.938' N	110° 21.175' W
Value at Risk	Communication Tower		33° 53.916' N	110° 22.033' W
Value at Risk	Communication Tower		33° 54.900' N	110° 22.333' W
Value at Risk	Communication Towers		33° 49.116' N	110° 28.501' W
Water Source	Carrizo Draft		33° 59.310' N	110° 16.976' W
Water Source	Nonpotable Hydrant		33° 52.335' N	110° 10.954' W
Water Source	Potable Hydrant		33° 52.355' N	110° 10.688' W
Water Source	Salt River Draft		33° 47.907' N	110° 30.089' W

- Dip Site
- Helispot
- Helibase
- Division Break
- Medical
- Incident Command Post
- Drop Point
- Closure
- Value at Risk
- Repeater
- Water Source
- Water Tank
- Completed Dozer Line
- Contained
- Uncontained
- Wildfire Daily Fire Perimeter
- Primary Highway
- Secondary Highway
- Road, Unspecified
- Road, Paved
- Road, Dirt
- Possible Road - Open Street Map
- Trail
- National Trail USGS
- USFS Administrative Forest
- USFS Ranger District
- Bureau of Indian Affairs (BIA)
- State
- US Forest Service (USFS)



1:60,000 | WMZ Type 3 IMT GISS | 7/10/2023 1748
Acres from IR & GPS
North American 1983 Datum, Lat/Long Grid

