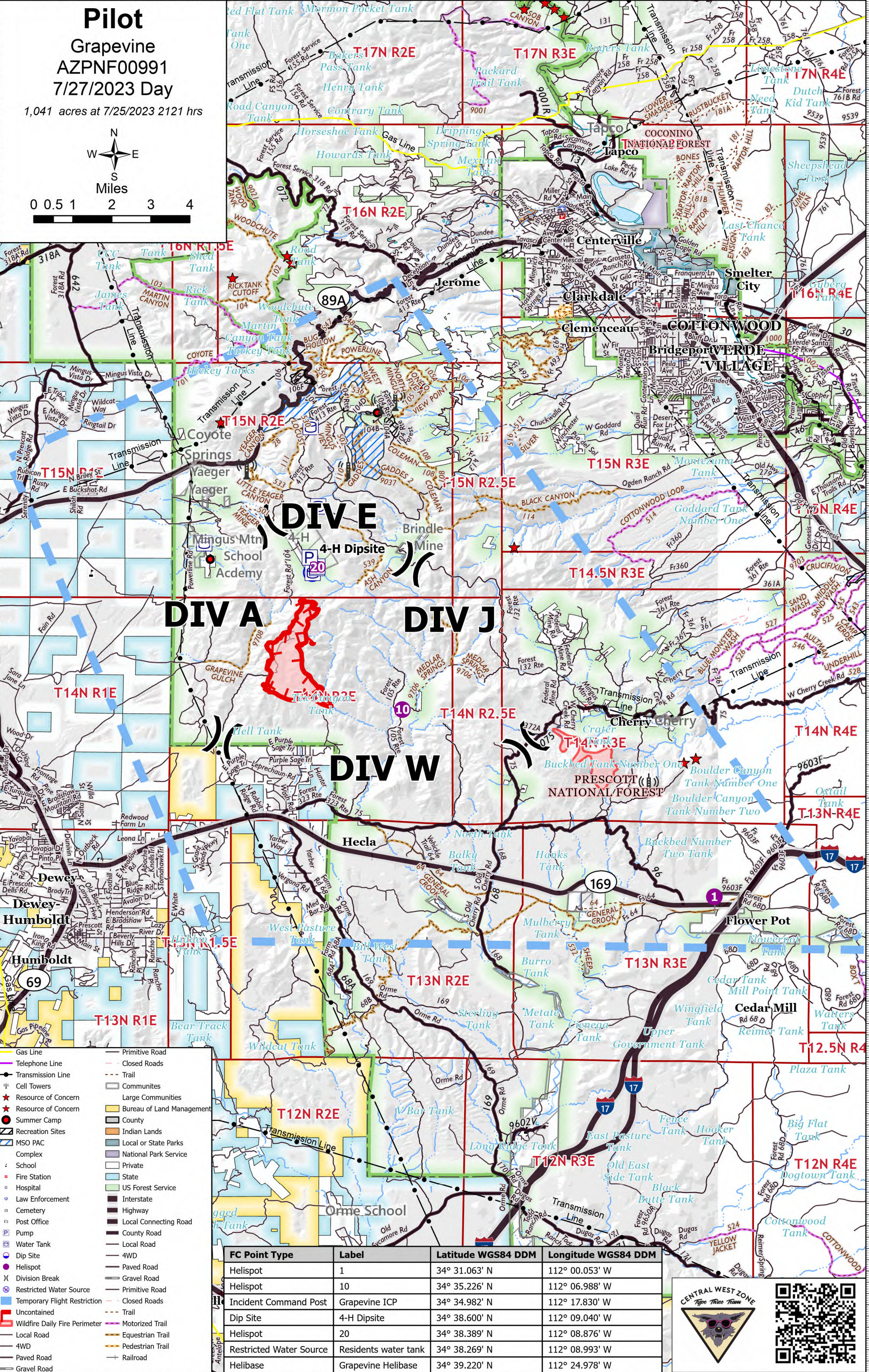
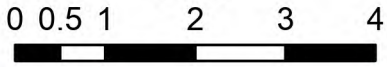


# Pilot

Grapevine  
AZPNF00991  
7/27/2023 Day

1,041 acres at 7/25/2023 2121 hrs



- Gas Line
- Telephone Line
- Transmission Line
- Cell Towers
- Resource of Concern
- Resource of Concern
- Summer Camp
- Recreation Sites
- MSO PAC
- Complex
- School
- Fire Station
- Hospital
- Law Enforcement
- Cemetery
- Post Office
- Pump
- Water Tank
- Dip Site
- Helispot
- Division Break
- Restricted Water Source
- Temporary Flight Restriction
- Uncontained
- Wildfire Daily Fire Perimeter
- Local Road
- 4WD
- Paved Road
- Gravel Road
- Primitive Road
- Closed Roads
- Trail
- Communities
- Large Communities
- Bureau of Land Management
- County
- Indian Lands
- Local or State Parks
- National Park Service
- Private
- State
- US Forest Service
- Interstate
- Highway
- Local Connecting Road
- County Road
- Local Road
- 4WD
- Paved Road
- Gravel Road
- Primitive Road
- Closed Roads
- Trail
- Motorized Trail
- Equestrian Trail
- Pedestrian Trail
- Railroad

FC Point Type	Label	Latitude WGS84 DDM	Longitude WGS84 DDM
Helispot	1	34° 31.063' N	112° 00.053' W
Helispot	10	34° 35.226' N	112° 06.988' W
Incident Command Post	Grapevine ICP	34° 34.982' N	112° 17.830' W
Dip Site	4-H Dipsite	34° 38.600' N	112° 09.040' W
Helispot	20	34° 38.389' N	112° 08.876' W
Restricted Water Source	Residents water tank	34° 38.269' N	112° 08.993' W
Helibase	Grapevine Helibase	34° 39.220' N	112° 24.978' W

