

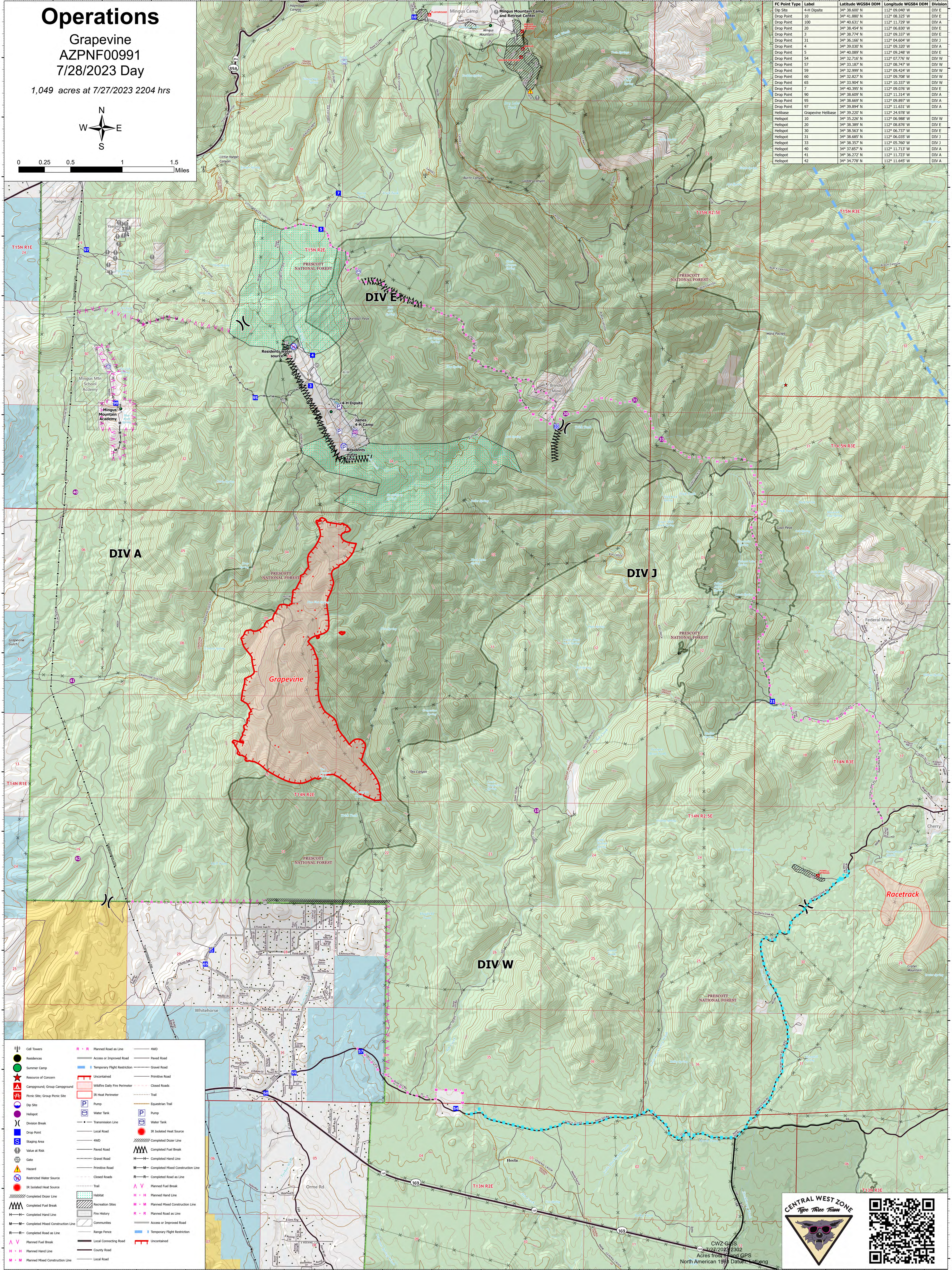
Operations

Grapevine
AZPNF00991
7/28/2023 Day

1,049 acres at 7/27/2023 2204 hrs



FC Point Type	Label	Latitude WGS84 DDM	Longitude WGS84 DDM	Division
Dip Site	4-H Dipste	34° 38.600' N	112° 09.940' W	DIV E
Drop Point	10	34° 41.880' N	112° 08.320' W	DIV A
Drop Point	100	34° 40.631' N	112° 11.720' W	DIV A
Drop Point	20	34° 38.454' N	112° 06.830' W	DIV E
Drop Point	3	34° 38.774' N	112° 09.337' W	DIV E
Drop Point	31	34° 36.166' N	112° 04.604' W	DIV J
Drop Point	4	34° 39.030' N	112° 09.320' W	DIV A
Drop Point	5	34° 40.089' N	112° 09.240' W	DIV E
Drop Point	54	34° 32.716' N	112° 07.776' W	DIV W
Drop Point	57	34° 33.187' N	112° 08.747' W	DIV W
Drop Point	59	34° 32.999' N	112° 09.424' W	DIV W
Drop Point	60	34° 32.827' N	112° 09.708' W	DIV W
Drop Point	65	34° 33.904' N	112° 10.337' W	DIV W
Drop Point	7	34° 40.089' N	112° 09.240' W	DIV E
Drop Point	90	34° 38.609' N	112° 11.314' W	DIV A
Drop Point	95	34° 38.669' N	112° 09.897' W	DIV A
Drop Point	97	34° 39.894' N	112° 11.631' W	DIV A
Helibase	Grapevine Helibase	34° 39.220' N	112° 24.978' W	
Helispot	10	34° 35.226' N	112° 06.988' W	DIV W
Helispot	20	34° 38.389' N	112° 08.074' W	DIV E
Helispot	30	34° 38.563' N	112° 06.727' W	DIV E
Helispot	31	34° 38.685' N	112° 06.035' W	DIV J
Helispot	33	34° 38.357' N	112° 05.760' W	DIV J
Helispot	40	34° 37.857' N	112° 11.713' W	DIV A
Helispot	41	34° 36.272' N	112° 11.723' W	DIV A
Helispot	42	34° 34.778' N	112° 11.645' W	DIV A



	Cell Towers		R - R Planned Road as Line		4WD
	Residences		Access or Improved Road		Paved Road
	Summer Camp		Temporary Flight Restriction		Gravel Road
	Resource of Concern		Uncontained		Primitive Road
	Campground, Group Campground		Wildfire Daily Fire Perimeter		Closed Roads
	Picnic Site, Group Picnic Site		IR Heat Perimeter		Trail
	Dip Site		Pump		Equestrian Trail
	Helispot		Water Tank		Completed Door Line
	Drop Point		Transmission Line		Completed Fuel Break
	Staging Area		Local Road		Completed Hand Line
	Value at Risk		4WD		Completed Mixed Construction Line
	Gate		Paved Road		Planned Fuel Break
	Hazard		Gravel Road		Planned Hand Line
	Restricted Water Source		Primitive Road		Planned Mixed Construction Line
	IR Isolated Heat Source		Closed Roads		Planned Road as Line
	Completed Door Line		Trail		Access or Improved Road
	Completed Fuel Break		Habitat		Temporary Flight Restriction
	Completed Hand Line		Recreation Sites		
	Completed Mixed Construction Line		Fire History		
	Planned Fuel Break		Communities		
	Planned Hand Line		Range Fence		
	Planned Mixed Construction Line		Local Connecting Road		
			County Road		
			Local Road		

CENTRAL WEST ZONE
Type Three Team

CWZ-GLES
 7/27/2023 2302
 Acres from 1984 GPS
 North American 1983 Datum, all along