

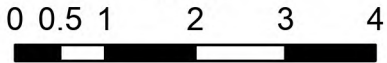
# Pilot

Grapevine  
AZPNF00991  
7/28/2023 Day

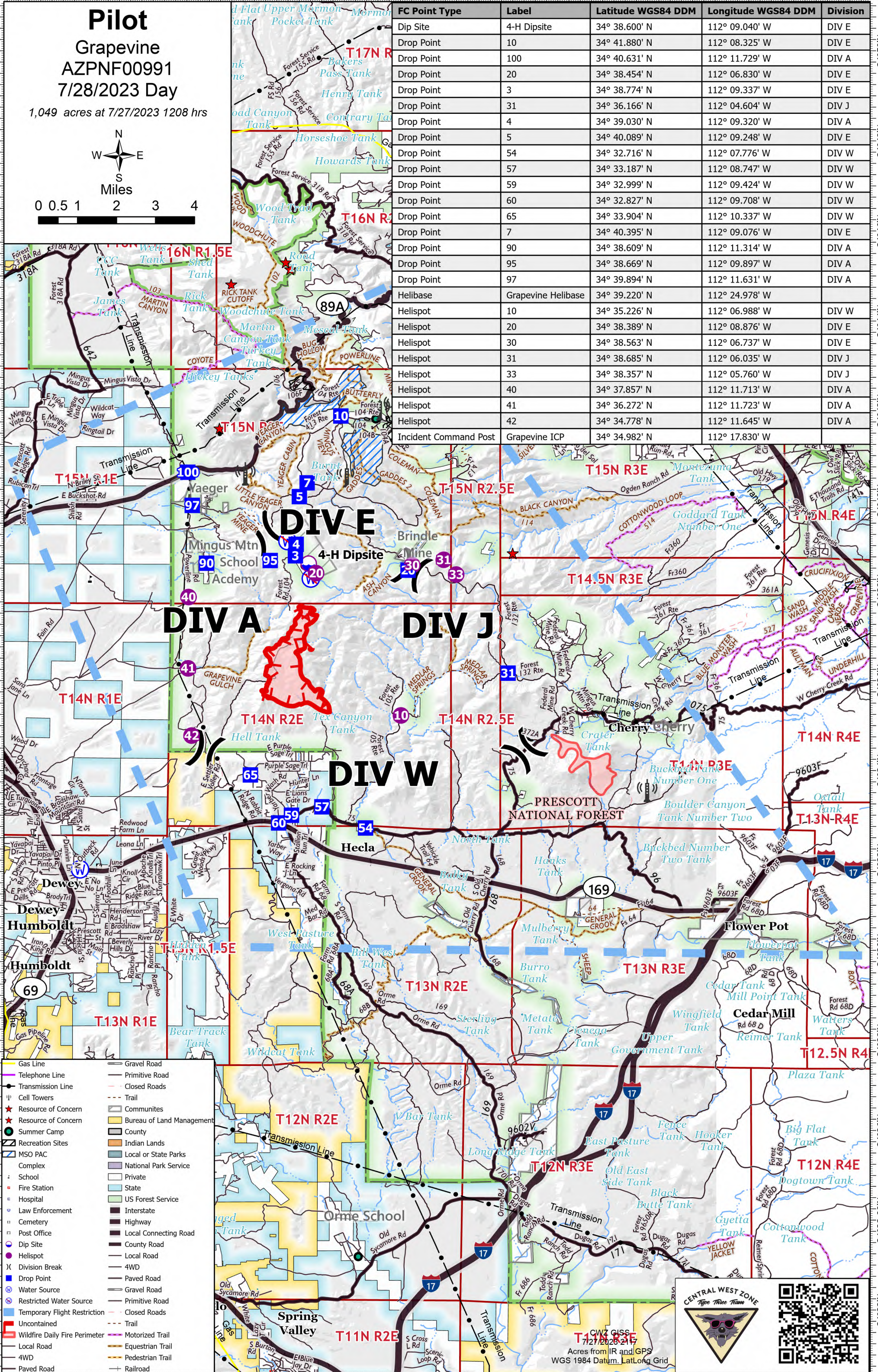
1,049 acres at 7/27/2023 1208 hrs



Miles



FC Point Type	Label	Latitude WGS84 DDM	Longitude WGS84 DDM	Division
Dip Site	4-H Dipsite	34° 38.600' N	112° 09.040' W	DIV E
Drop Point	10	34° 41.880' N	112° 08.325' W	DIV E
Drop Point	100	34° 40.631' N	112° 11.729' W	DIV A
Drop Point	20	34° 38.454' N	112° 06.830' W	DIV E
Drop Point	3	34° 38.774' N	112° 09.337' W	DIV E
Drop Point	31	34° 36.166' N	112° 04.604' W	DIV J
Drop Point	4	34° 39.030' N	112° 09.320' W	DIV A
Drop Point	5	34° 40.089' N	112° 09.248' W	DIV E
Drop Point	54	34° 32.716' N	112° 07.776' W	DIV W
Drop Point	57	34° 33.187' N	112° 08.747' W	DIV W
Drop Point	59	34° 32.999' N	112° 09.424' W	DIV W
Drop Point	60	34° 32.827' N	112° 09.708' W	DIV W
Drop Point	65	34° 33.904' N	112° 10.337' W	DIV W
Drop Point	7	34° 40.395' N	112° 09.076' W	DIV E
Drop Point	90	34° 38.609' N	112° 11.314' W	DIV A
Drop Point	95	34° 38.669' N	112° 09.897' W	DIV A
Drop Point	97	34° 39.894' N	112° 11.631' W	DIV A
Helibase	Grapevine Helibase	34° 39.220' N	112° 24.978' W	
Helispot	10	34° 35.226' N	112° 06.988' W	DIV W
Helispot	20	34° 38.389' N	112° 08.876' W	DIV E
Helispot	30	34° 38.563' N	112° 06.737' W	DIV E
Helispot	31	34° 38.685' N	112° 06.035' W	DIV J
Helispot	33	34° 38.357' N	112° 05.760' W	DIV J
Helispot	40	34° 37.857' N	112° 11.713' W	DIV A
Helispot	41	34° 36.272' N	112° 11.723' W	DIV A
Helispot	42	34° 34.778' N	112° 11.645' W	DIV A
Incident Command Post	Grapevine ICP	34° 34.982' N	112° 17.830' W	



**DIV E**  
**DIV A**  
**DIV J**  
**DIV W**

- Gas Line
- Telephone Line
- Transmission Line
- Cell Towers
- Resource of Concern
- Resource of Concern
- Summer Camp
- Recreation Sites
- MSO PAC
- Complex
- Fire Station
- Hospital
- Law Enforcement
- Cemetery
- Post Office
- Dip Site
- Helispot
- Division Break
- Drop Point
- Water Source
- Restricted Water Source
- Temporary Flight Restriction
- Uncontained
- Wildfire Daily Fire Perimeter
- Local Road
- 4WD
- Paved Road
- Gravel Road
- Primitive Road
- Closed Roads
- Trail
- Communities
- Bureau of Land Management
- County
- Indian Lands
- Local or State Parks
- National Park Service
- Private
- State
- US Forest Service
- Interstate
- Highway
- Local Connecting Road
- County Road
- Local Road
- 4WD
- Paved Road
- Gravel Road
- Primitive Road
- Closed Roads
- Trail
- Motorized Trail
- Equestrian Trail
- Pedestrian Trail
- Railroad

CENTRAL WEST ZONE  
Type Three Team

CWZ GIS  
7/27/2023 2:17  
Acres from IR and GPS  
WGS 1984 Datum, LatLong Grid