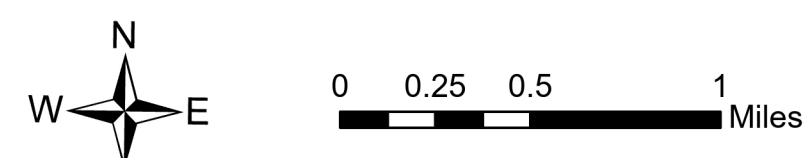


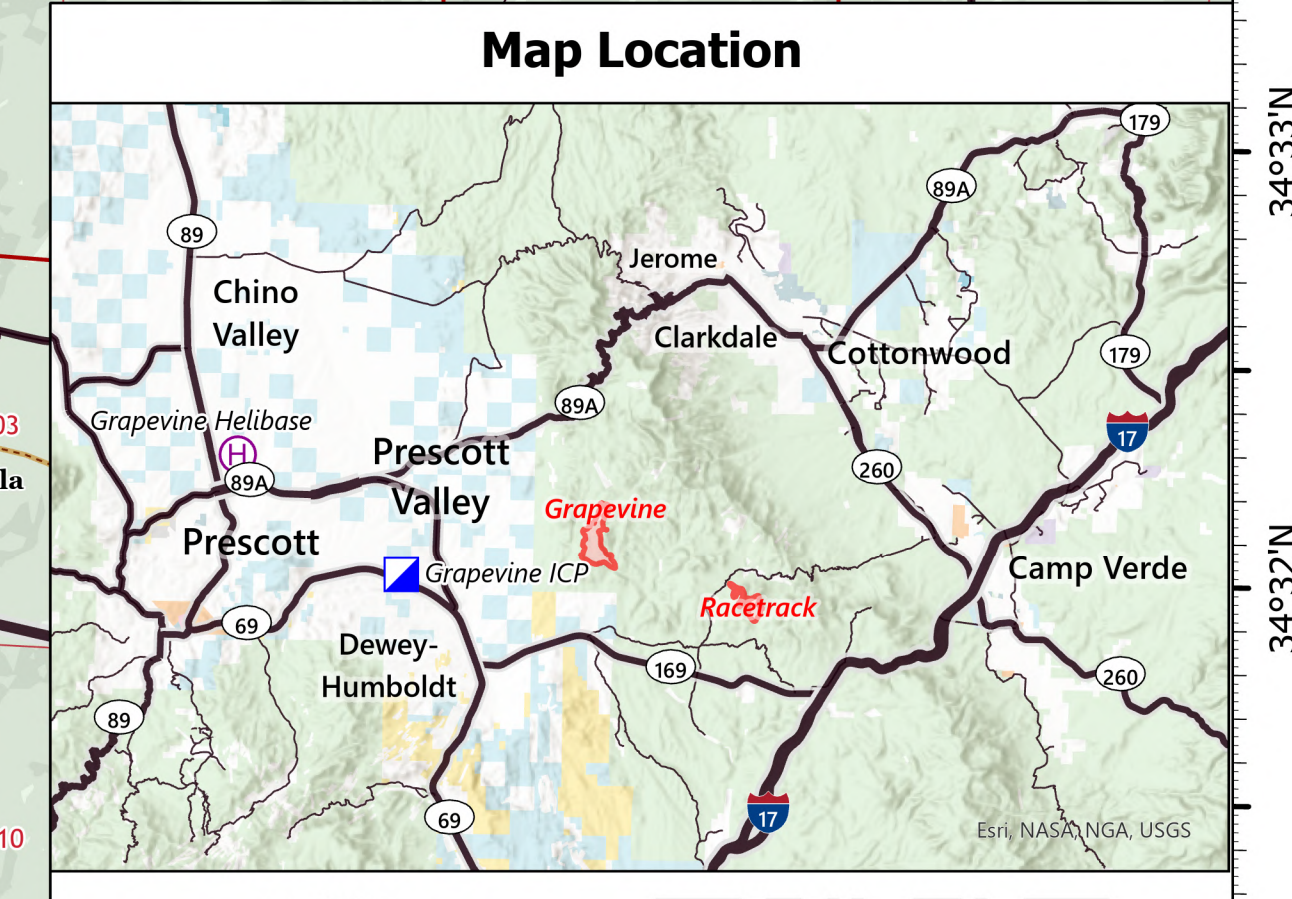
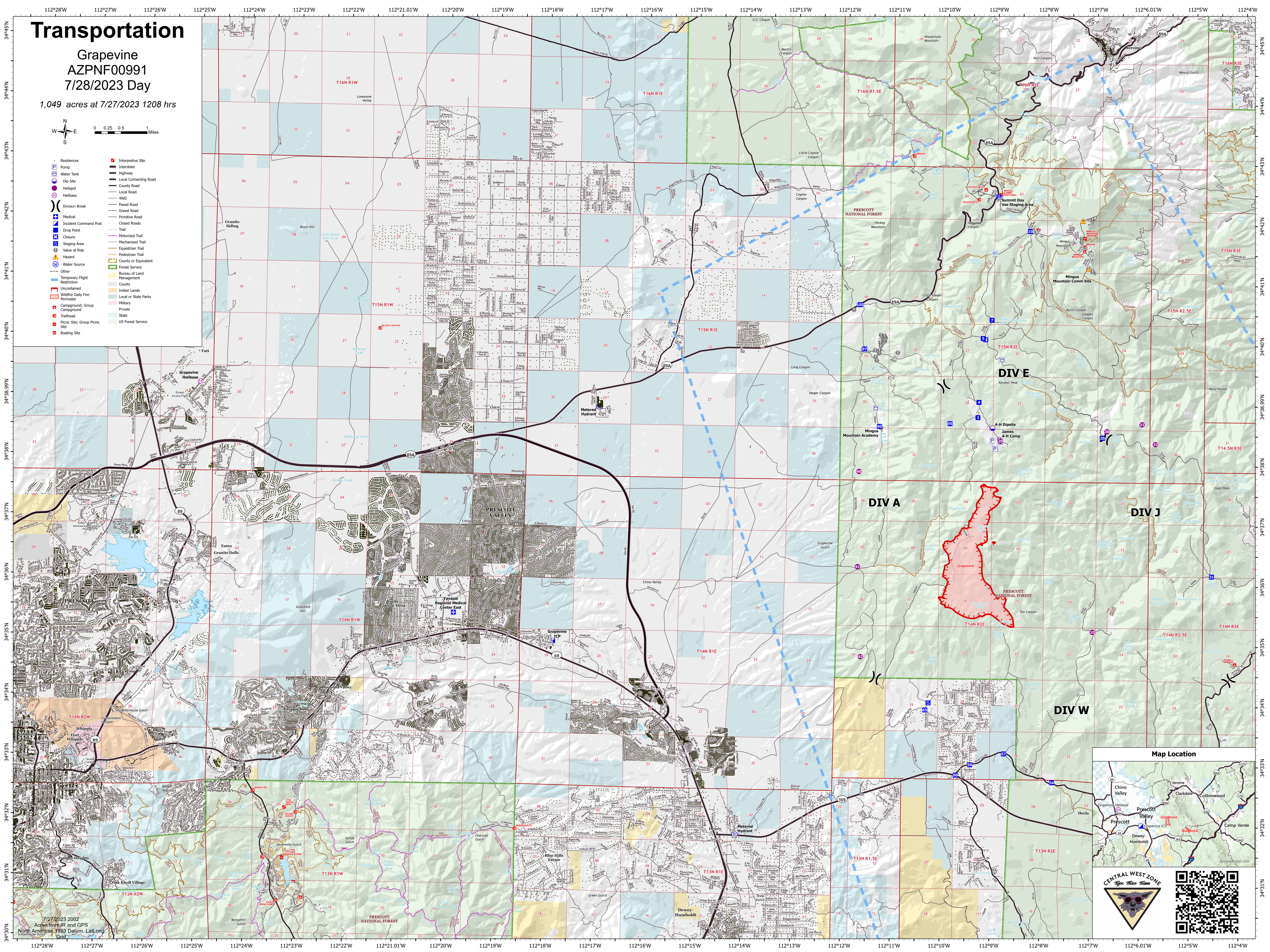
Transportation

Grapevine
AZPNF00991
7/28/2023 Day

1,049 acres at 7/27/2023 1208 hrs



- Residences
- Interpretive Site
- Pump
- Interstate
- Water Tank
- Local Connecting Road
- Dip Site
- County Road
- Local Road
- 4WD
- Paved Road
- Gravel Road
- Primitive Road
- Closed Roads
- Division Break
- Medical
- Incident Command Post
- Drop Point
- Closure
- Staging Area
- Value at Risk
- Hazard
- Water Source
- Other
- Temporary Flight Restriction
- County
- Uncertain
- Wildfire Daily Fire Perimeter
- Campground: Group
- Campground
- Trailhead
- Picnic Site: Group Picnic Site
- Boating Site
- Mechanical Trail
- Equestrian Trail
- Pedestrian Trail
- County or Equivalent
- Forest Service
- Bureau of Land Management
- Indian Lands
- Local or State Parks
- Military
- Private
- State
- US Forest Service



7/27/2023 2002
Acres from IIR and GPS
North American 1983 Datum, LALong
Coordinate System