

Operations

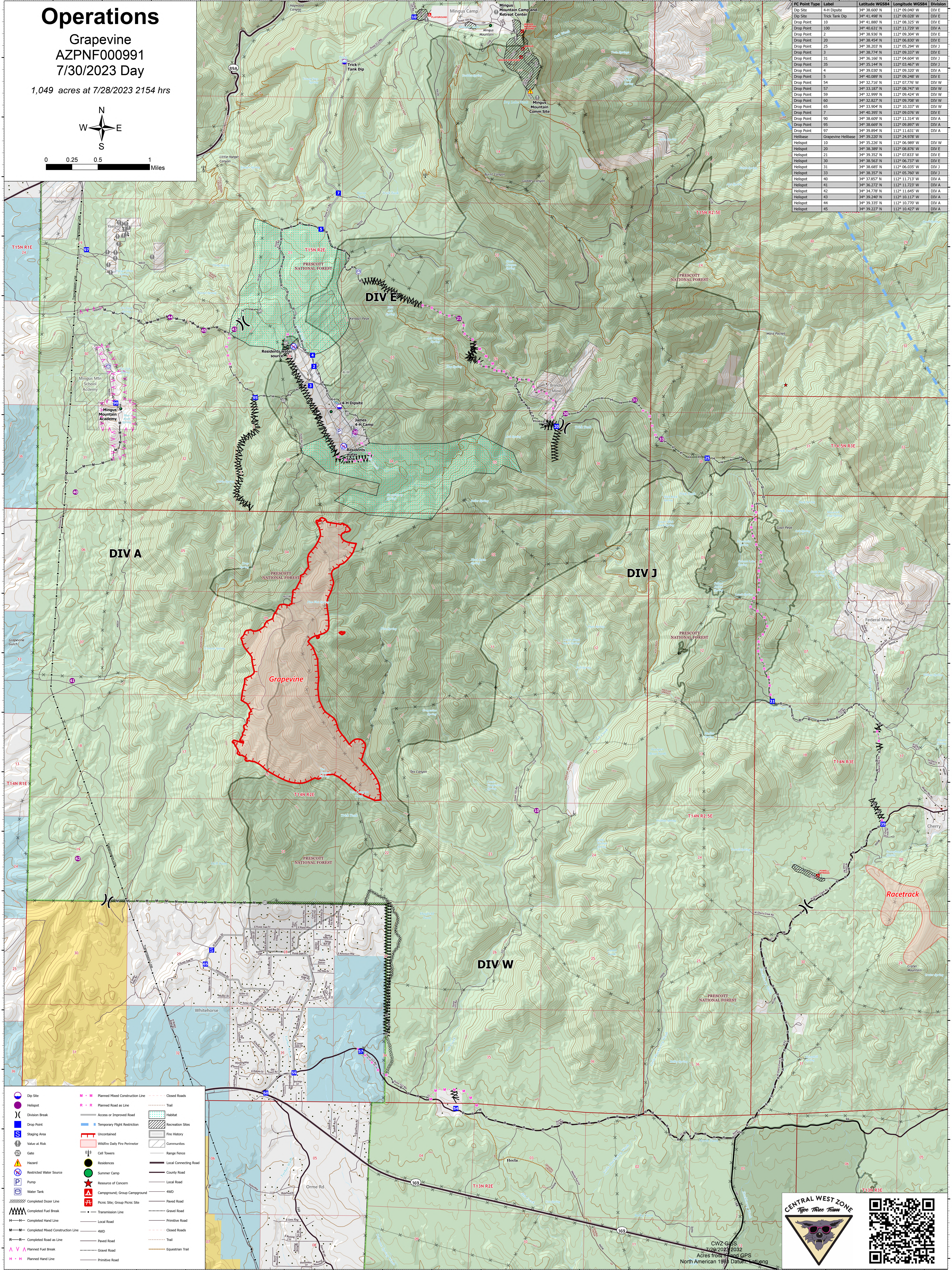
Grapevine
AZPNF000991
7/30/2023 Day

1,049 acres at 7/28/2023 2154 hrs



0 0.25 0.5 1 Miles

FC Point Type	Label	Latitude WGS84	Longitude WGS84	Division
Dip Site	4-H Dip Site	34° 38.600' N	112° 09.040' W	DIV E
Dip Site	Trick Tank Dip	34° 41.488' N	112° 08.020' W	DIV E
Drop Point	10	34° 41.880' N	112° 08.325' W	DIV E
Drop Point	100	34° 38.936' N	112° 09.304' W	DIV A
Drop Point	2	34° 38.454' N	112° 06.830' W	DIV E
Drop Point	20	34° 38.203' N	112° 05.294' W	DIV J
Drop Point	25	34° 38.778' N	112° 09.337' W	DIV W
Drop Point	3	34° 36.160' N	112° 04.604' W	DIV J
Drop Point	31	34° 35.144' N	112° 03.467' W	DIV J
Drop Point	4	34° 39.030' N	112° 09.320' W	DIV A
Drop Point	5	34° 40.089' N	112° 09.248' W	DIV E
Drop Point	54	34° 32.716' N	112° 07.776' W	DIV W
Drop Point	57	34° 33.180' N	112° 08.897' W	DIV W
Drop Point	59	34° 32.999' N	112° 09.424' W	DIV W
Drop Point	60	34° 32.827' N	112° 09.708' W	DIV W
Drop Point	65	34° 33.904' N	112° 10.337' W	DIV W
Drop Point	7	34° 40.395' N	112° 09.076' W	DIV E
Drop Point	90	34° 38.609' N	112° 11.314' W	DIV A
Drop Point	95	34° 38.669' N	112° 09.897' W	DIV A
Drop Point	97	34° 39.894' N	112° 11.631' W	DIV A
Helibase	Grapevine Helibase	34° 39.220' N	112° 24.978' W	DIV W
Helispot	10	34° 35.226' N	112° 06.989' W	DIV W
Helispot	20	34° 38.389' N	112° 08.876' W	DIV E
Helispot	21	34° 39.352' N	112° 07.833' W	DIV E
Helispot	30	34° 38.568' N	112° 06.270' W	DIV E
Helispot	31	34° 38.685' N	112° 06.078' W	DIV J
Helispot	33	34° 38.357' N	112° 05.760' W	DIV J
Helispot	40	34° 37.857' N	112° 11.713' W	DIV A
Helispot	41	34° 36.272' N	112° 11.723' W	DIV A
Helispot	42	34° 34.778' N	112° 11.645' W	DIV A
Helispot	43	34° 39.280' N	112° 10.127' W	DIV A
Helispot	44	34° 39.335' N	112° 10.770' W	DIV A
Helispot	45	34° 39.227' N	112° 10.427' W	DIV A



CENTRAL WEST ZONE
Type Three Team

CWZ GIS
7/29/2023 2032
Acres from 2023 GPS
North American 1983 Datum, along