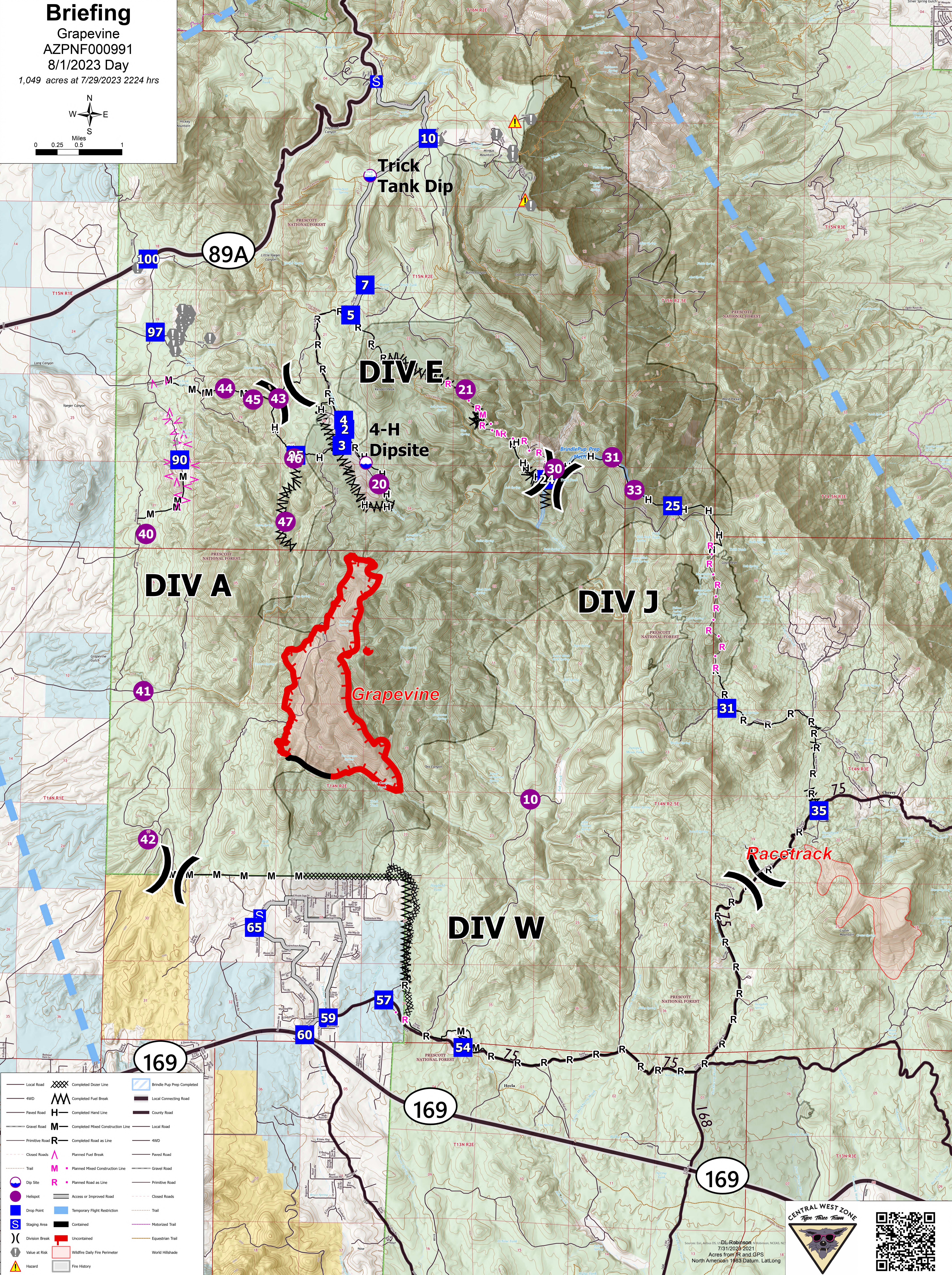
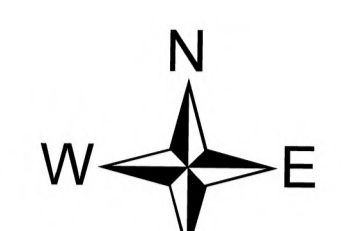


Briefing

Grapevine
AZPNF000991
8/1/2023 Day

1,049 acres at 7/29/2023 2224 hrs



Local Road	XXXX	Completed Dozer Line	Blue hatched box	Brindle Pup Prep Completed
4WD	MM	Completed Fuel Break	Black line	Local Connecting Road
Paved Road	H	Completed Hand Line	Black line	County Road
Gravel Road	M	Completed Mixed Construction Line	Black line	Local Road
Primitive Road	R	Completed Road as Line	Black line	4WD
Closed Roads	^	Planned Fuel Break	Black line	Paved Road
Trail	M	Planned Mixed Construction Line	Black line	Gravel Road
Dip Site	Circle with blue dot	Access or Improved Road	Black line	Primitive Road
Helispot	Circle with purple dot	Wildfire Daily Fire Perimeter	Red outline	Closed Roads
Drop Point	Blue square	Temporary Flight Restriction	Blue hatched box	Trail
Staging Area	Blue square with 'S'	Contained	Black outline	Motorized Trail
Division Break	Black line with 'R'	Uncontained	Red outline	Equestrian Trail
Value at Risk	Yellow triangle	Fire History	Grey outline	World Hillshade
Hazard	Yellow triangle with exclamation mark			



Sources: Esri, Airphoto, USGS, DL Robinson
7/31/2023 2021
Acres from IR and GPS
North American 1983 Datum, Lat/Long