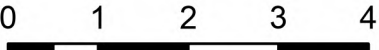


Pilot

Grapevine
AZPNF000991
8/1/2023 Day

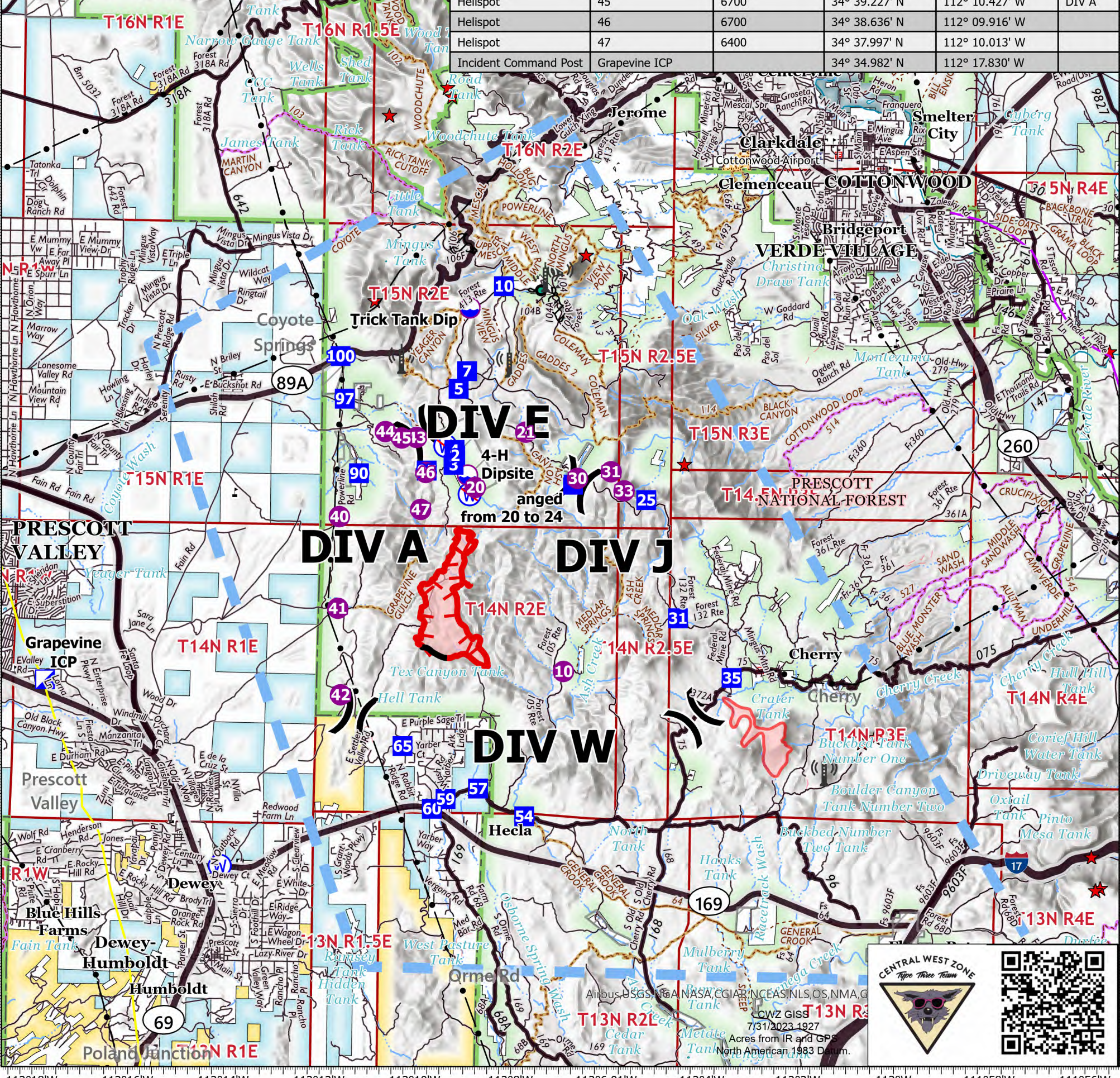
1,049 acres at 7/29/2023 2224 hrs



Miles

- Gas Line
- Telephone Line
- Transmission Line
- ⊙ Cell Towers
- ★ Resource of Concern
- ★ Resource of Concern
- Summer Camp
- Recreation Sites
- Dip Site
- ⊙ Helispot
- X Division Break
- ⊙ Incident Command Post
- ⊙ Drop Point
- ⊙ Water Source
- ⊙ Restricted Water Source
- ⊙ Temporary Flight Restriction
- Contained
- Uncontained
- Wildfire Daily Fire Perimeter
- Local Road
- 4WD
- Paved Road
- Gravel Road
- Primitive Road
- Closed Roads
- Trail
- Motorized Trail
- Equestrian Trail
- Pedestrian Trail
- Railroad
- Closed Roads
- Trail
- Communitives
- Bureau of Land Management
- Indian Lands
- Local or State Parks
- National Park Service
- Private
- State
- US Forest Service
- Interstate
- Highway
- Local Connecting Road
- County Road
- Local Road
- 4WD
- Paved Road
- Gravel Road
- Primitive Road

FC Point Type	Label	Elevation (Feet)	Latitude WGS84	Longitude WGS84	Division
Dip Site	4-H Dipsite		34° 38.600' N	112° 09.040' W	DIV E
Dip Site	Trick Tank Dip	7400	34° 41.498' N	112° 09.028' W	DIV E
Drop Point	10		34° 41.880' N	112° 08.325' W	DIV E
Drop Point	100		34° 40.631' N	112° 11.729' W	DIV A
Drop Point	2		34° 38.936' N	112° 09.304' W	DIV E
Drop Point	25		34° 38.203' N	112° 05.294' W	DIV J
Drop Point	3		34° 38.774' N	112° 09.337' W	DIV E
Drop Point	31		34° 36.166' N	112° 04.604' W	DIV J
Drop Point	35		34° 35.144' N	112° 03.467' W	DIV J
Drop Point	4		34° 39.030' N	112° 09.320' W	DIV A
Drop Point	5		34° 40.089' N	112° 09.248' W	DIV E
Drop Point	54		34° 32.716' N	112° 07.776' W	DIV W
Drop Point	57		34° 33.187' N	112° 08.747' W	DIV W
Drop Point	59		34° 32.999' N	112° 09.424' W	DIV W
Drop Point	60		34° 32.827' N	112° 09.708' W	DIV W
Drop Point	65		34° 33.904' N	112° 10.337' W	DIV W
Drop Point	7		34° 40.395' N	112° 09.076' W	DIV E
Drop Point	90		34° 38.609' N	112° 11.314' W	DIV A
Drop Point	95		34° 38.669' N	112° 09.897' W	DIV A
Drop Point	97		34° 39.894' N	112° 11.631' W	DIV A
Drop Point	anged from 20 to 24		34° 38.454' N	112° 06.830' W	DIV E
Helibase	Grapevine Helibase		34° 39.220' N	112° 24.978' W	
Helispot	10	5700	34° 35.226' N	112° 06.989' W	DIV W
Helispot	20	6520	34° 38.389' N	112° 08.876' W	DIV E
Helispot	21	6600	34° 39.352' N	112° 07.833' W	DIV E
Helispot	30	6600	34° 38.563' N	112° 06.737' W	DIV E
Helispot	31		34° 38.685' N	112° 06.035' W	DIV J
Helispot	33	6800	34° 38.357' N	112° 05.760' W	DIV J
Helispot	40	5500	34° 37.857' N	112° 11.713' W	DIV A
Helispot	41	5300	34° 36.272' N	112° 11.723' W	DIV A
Helispot	42	5200	34° 34.778' N	112° 11.645' W	DIV A
Helispot	43	7000	34° 39.240' N	112° 10.117' W	DIV A
Helispot	44	6300	34° 39.335' N	112° 10.770' W	DIV A
Helispot	45	6700	34° 39.227' N	112° 10.427' W	DIV A
Helispot	46	6700	34° 38.636' N	112° 09.916' W	DIV A
Helispot	47	6400	34° 37.997' N	112° 10.013' W	DIV A
Incident Command Post	Grapevine ICP		34° 34.982' N	112° 17.830' W	



7/31/2023 1927
Acres from IR and GPS
North American 1983 Datum.