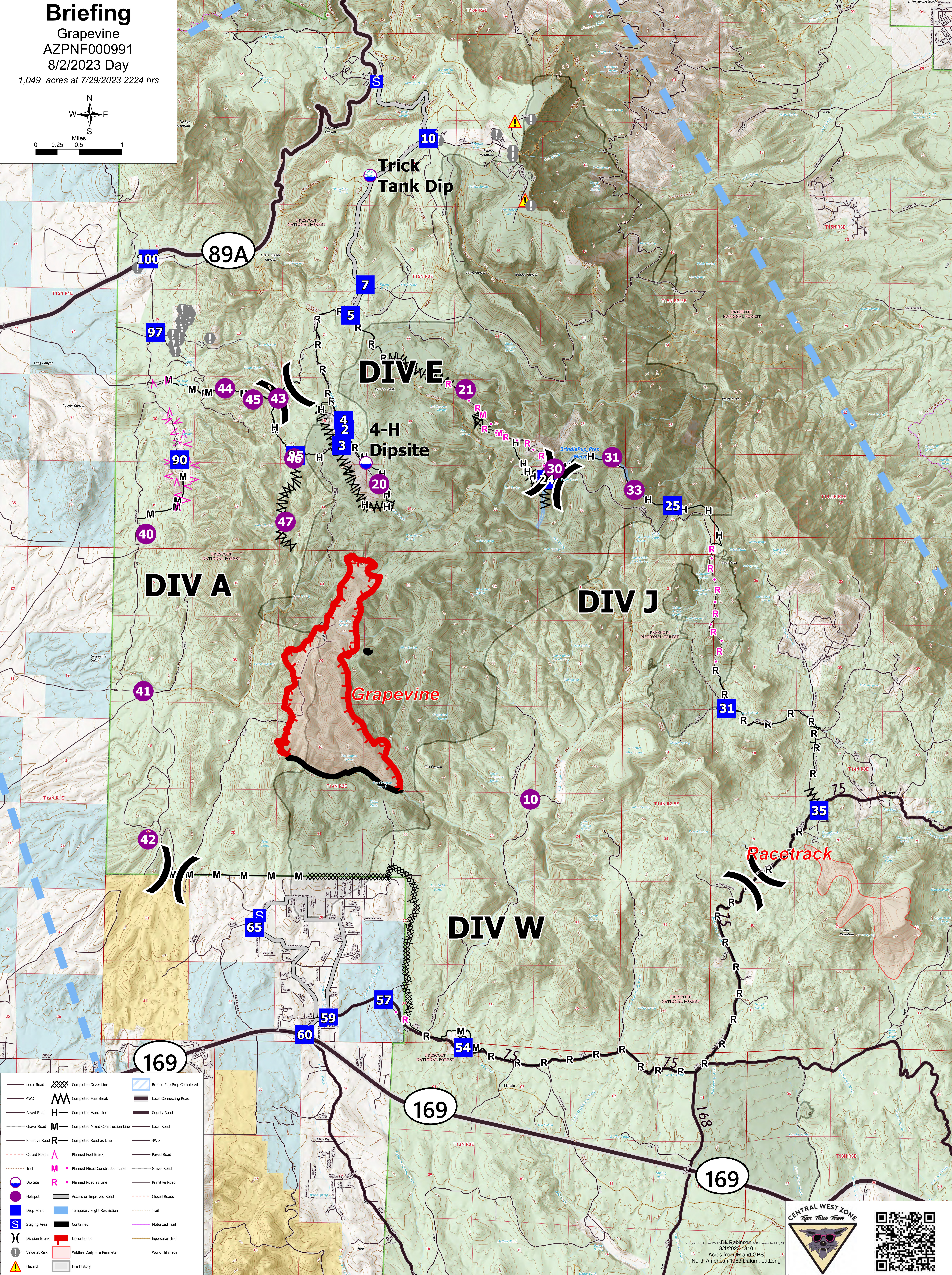
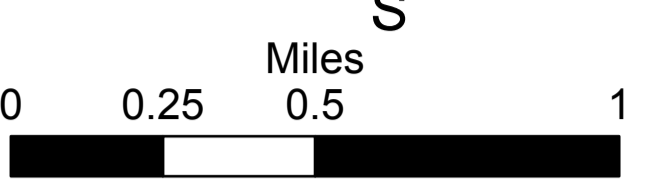
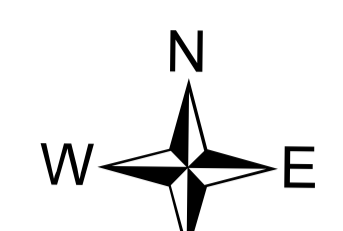


# Briefing

Grapevine  
AZPNF000991  
8/2/2023 Day  
1,049 acres at 7/29/2023 2224 hrs



Local Road	XXXX	Completed Dozer Line	Blue dashed line	Brindle Pup Prep Completed
4WD	MM	Completed Fuel Break	Black line	Local Connecting Road
Paved Road	H	Completed Hand Line	Black line	County Road
Gravel Road	M	Completed Mixed Construction Line	Black line	Local Road
Primitive Road	R	Completed Road as Line	Black line	4WD
Closed Roads	^	Planned Fuel Break	Black line	Paved Road
Trail	M	Planned Mixed Construction Line	Black line	Gravel Road
Dip Site	Blue circle	Access or Improved Road	Black line	Primitive Road
Hotspot	Red circle	Wildfire Daily Fire Perimeter	Red line	Closed Roads
Drop Point	Blue square	Temporary Flight Restriction	Blue dashed line	Trail
Staging Area	Blue square with S	Contained	Black line	Motorized Trail
Division Break	Black line with )	Uncontained	Red line	Equestrian Trail
Value at Risk	Yellow triangle	Fire History	Grey line	World Hillshade
Hazard	Yellow triangle with exclamation mark			

**CENTRAL WEST ZONE**  
Type Three Team

Sources: Esri, Airbus DS, DL Robinson  
8/1/2023 1810  
Acres from IR and GPS  
North American 1983 Datum, Lat,Long