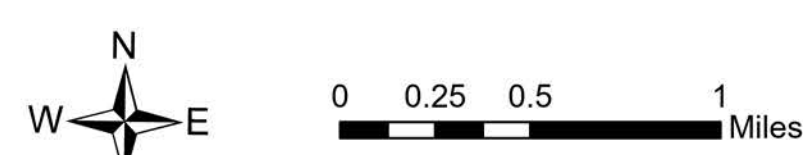


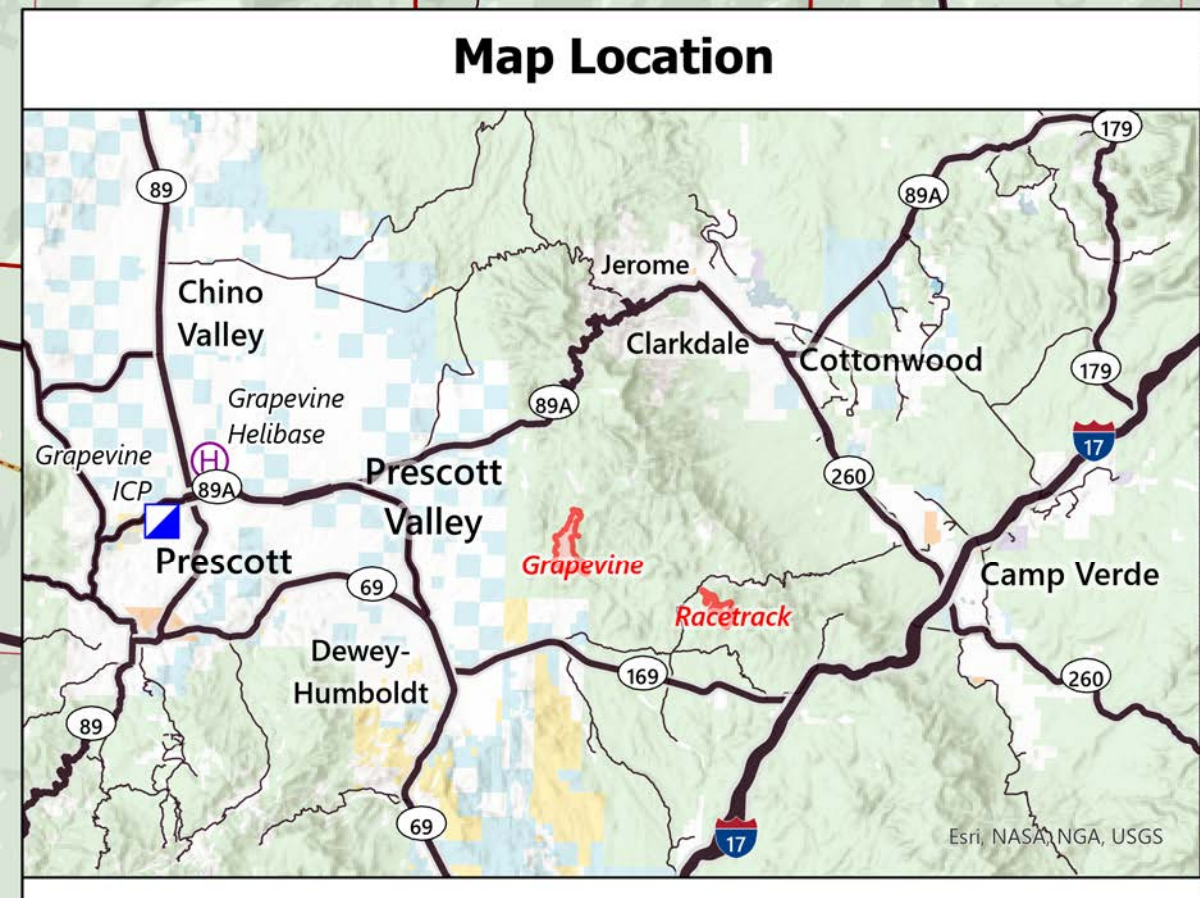
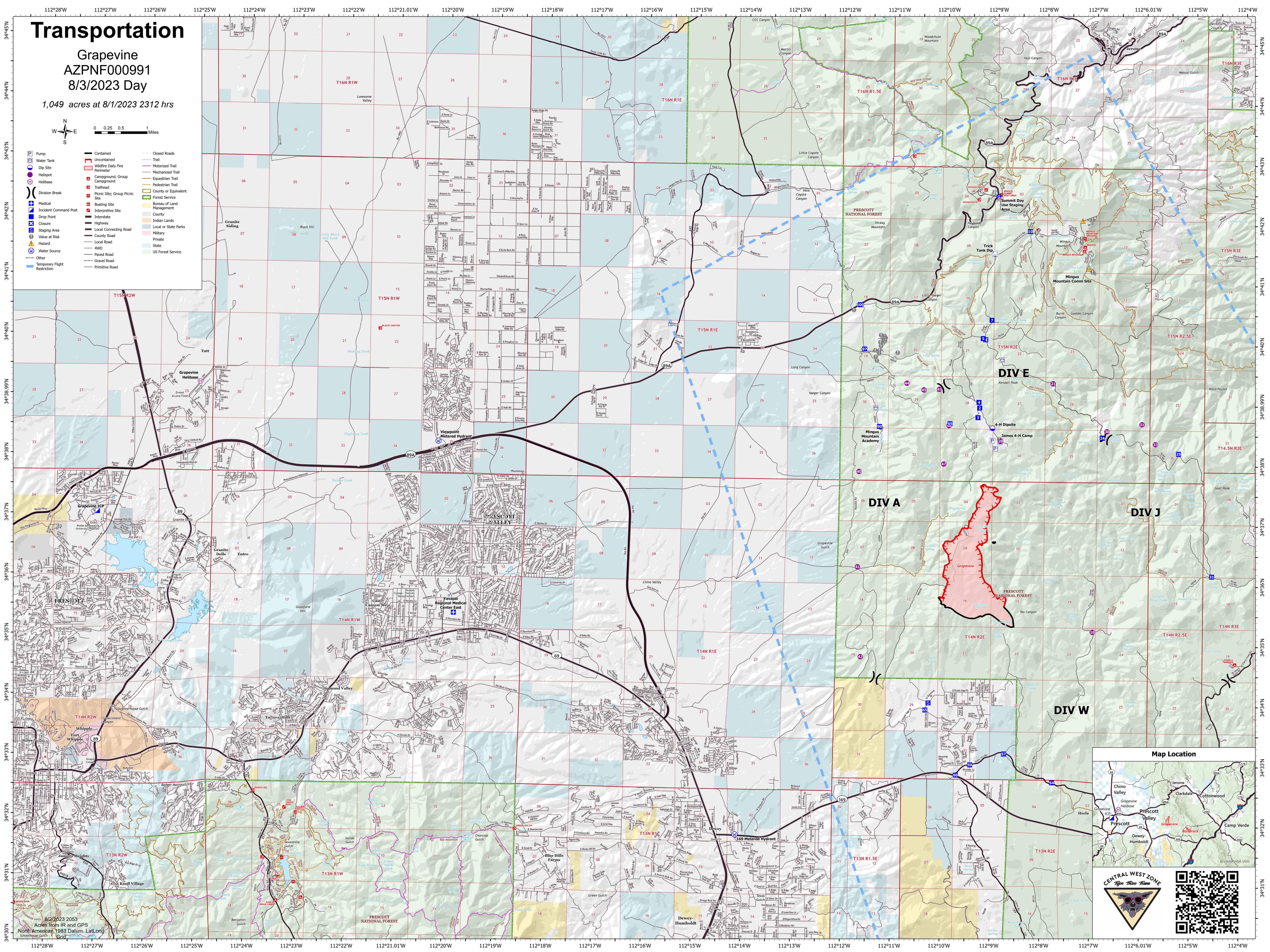
Transportation

Grapevine
AZPNF000991
8/3/2023 Day

1,049 acres at 8/1/2023 2312 hrs



- Pump
 - Water Tank
 - Dip Site
 - Helispot
 - Division Break
 - Medical
 - Incident Command Post
 - Drop Point
 - Closure
 - Staging Area
 - Value at Risk
 - Hazard
 - Water Source
 - Other
 - Temporary Flight Restriction
- Contained
 - Uncontained
 - Wildfire Daily Fire
 - Perimeter
 - Campround; Group
 - Campround
 - Trailhead
 - Picnic Site; Group Picnic
 - Site
 - Boating Site
 - Interpretive Site
 - Highway
 - Local Connecting Road
 - County Road
 - Local Road
 - 4WD
 - Paved Road
 - Gravel Road
 - Primitive Road
- Closed Roads
 - Trail
 - Motorized Trail
 - Mechanized Trail
 - Equestrian Trail
 - Pedestrian Trail
 - County or Equivalent
 - Forest Service
 - Bureau of Land Management
 - County
 - Indian Lands
 - Local or State Parks
 - Military
 - Private
 - State
 - US Forest Service



8/2/2023 2053
Acres from IR and GPS
North American 1983 Datum, Lat/Long
Spheroid: NAD83