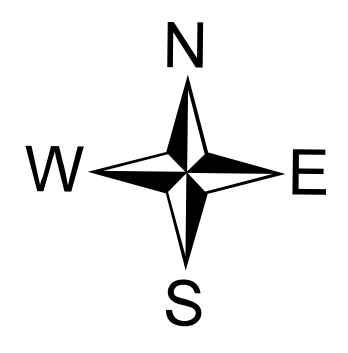


# Operations

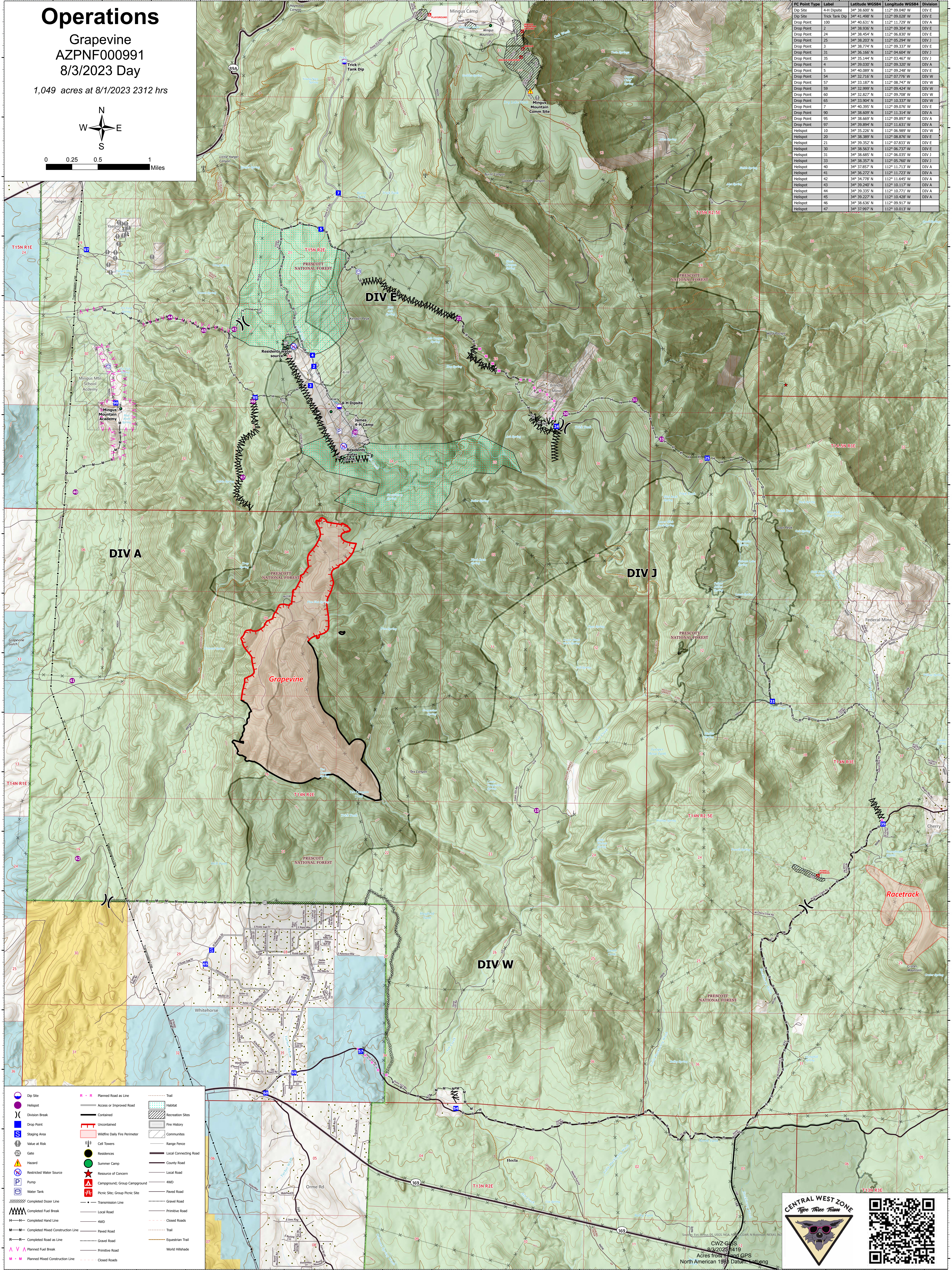
Grapevine  
AZPNF000991  
8/3/2023 Day

1,049 acres at 8/1/2023 2312 hrs



0 0.25 0.5 1 Miles

FC Point Type	Label	Latitude WGS84	Longitude WGS84	Division
Dip Site	4-H Dip Site	34° 38.600' N	112° 09.040' W	DIV E
Dip Site	Trick Tank Dip	34° 41.898' N	112° 09.028' W	DIV E
Drop Point	100	34° 40.631' N	112° 11.729' W	DIV A
Drop Point	2	34° 38.930' N	112° 09.304' W	DIV E
Drop Point	24	34° 38.454' N	112° 06.830' W	DIV J
Drop Point	25	34° 38.203' N	112° 05.294' W	DIV E
Drop Point	3	34° 38.774' N	112° 09.337' W	DIV E
Drop Point	31	34° 38.166' N	112° 04.684' W	DIV J
Drop Point	35	34° 35.144' N	112° 03.467' W	DIV J
Drop Point	4	34° 39.030' N	112° 09.320' W	DIV A
Drop Point	5	34° 40.089' N	112° 09.248' W	DIV W
Drop Point	54	34° 32.716' N	112° 07.776' W	DIV W
Drop Point	57	34° 31.187' N	112° 06.747' W	DIV W
Drop Point	59	34° 33.999' N	112° 09.424' W	DIV W
Drop Point	60	34° 32.827' N	112° 09.708' W	DIV W
Drop Point	65	34° 33.904' N	112° 10.337' W	DIV W
Drop Point	7	34° 40.395' N	112° 09.076' W	DIV E
Drop Point	90	34° 38.609' N	112° 11.314' W	DIV A
Drop Point	95	34° 38.669' N	112° 09.897' W	DIV A
Drop Point	97	34° 39.894' N	112° 11.631' W	DIV A
Helicopter	10	34° 35.226' N	112° 06.989' W	DIV W
Helicopter	20	34° 38.389' N	112° 08.876' W	DIV E
Helicopter	21	34° 39.352' N	112° 07.833' W	DIV E
Helicopter	30	34° 38.563' N	112° 06.737' W	DIV J
Helicopter	31	34° 38.685' N	112° 06.035' W	DIV J
Helicopter	33	34° 38.355' N	112° 06.760' W	DIV J
Helicopter	40	34° 37.857' N	112° 11.713' W	DIV A
Helicopter	41	34° 36.272' N	112° 11.723' W	DIV A
Helicopter	42	34° 34.778' N	112° 11.645' W	DIV A
Helicopter	43	34° 39.240' N	112° 10.117' W	DIV A
Helicopter	44	34° 39.335' N	112° 10.771' W	DIV A
Helicopter	45	34° 38.227' N	112° 09.424' W	DIV A
Helicopter	46	34° 38.636' N	112° 09.917' W	DIV A
Helicopter	47	34° 37.997' N	112° 10.013' W	DIV A




**CENTRAL WEST ZONE**  
Type Three Team

CWZ CLES  
8/3/2023 1419  
Acres from 1986 GPS  
North American 1983 Datum, along