

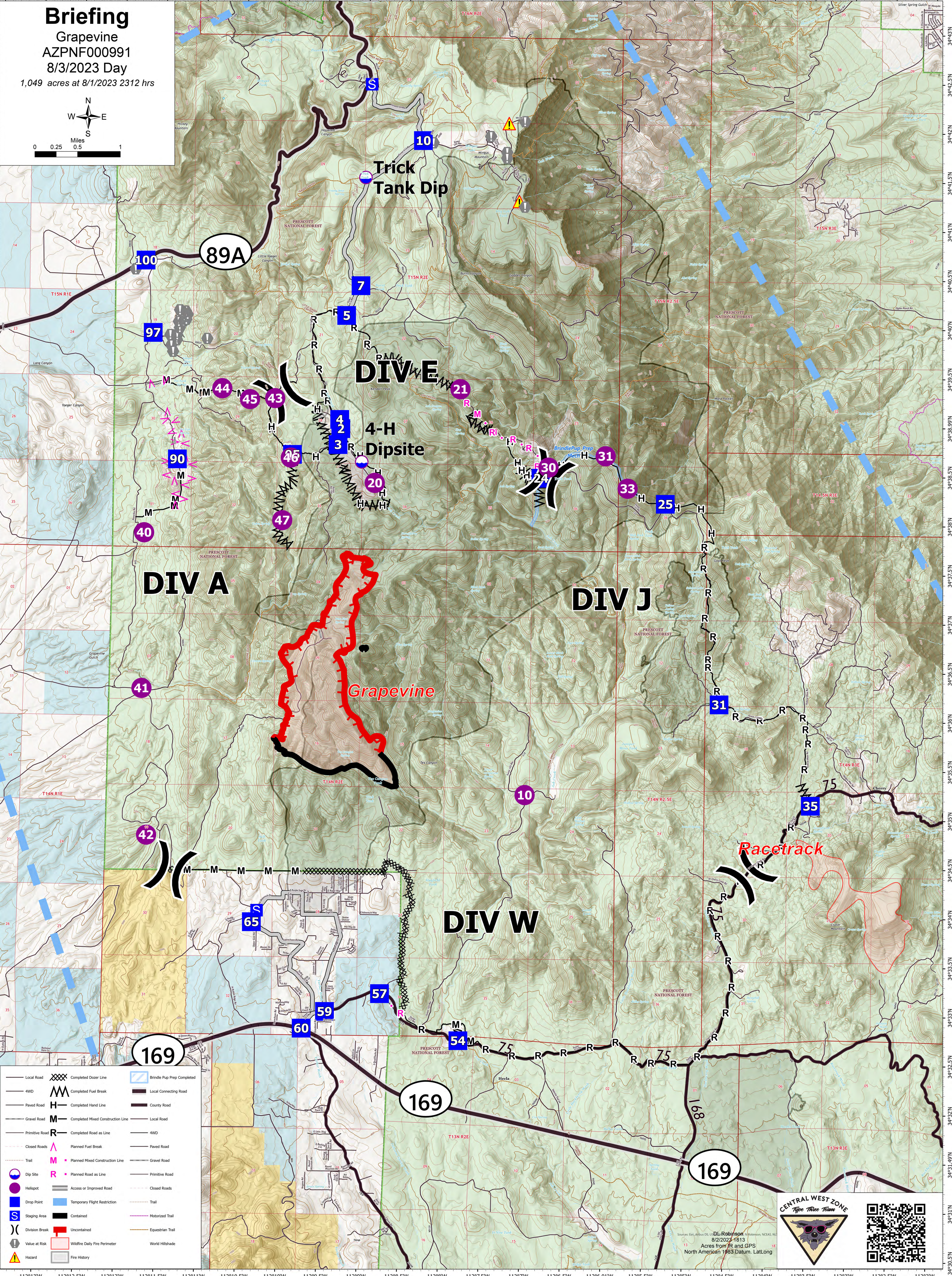
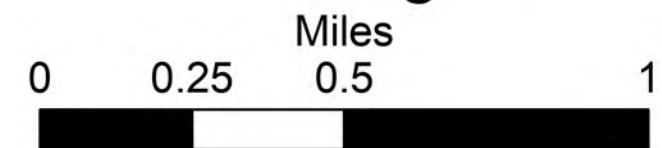
Briefing

Grapevine

AZPNF000991

8/3/2023 Day

1,049 acres at 8/1/2023 2312 hrs



Local Road	Completed Dozer Line	Brindle Pup Prep Completed
4WD	Completed Fuel Break	Local Connecting Road
Paved Road	Completed Hand Line	County Road
Gravel Road	Completed Mixed Construction Line	Local Road
Primitive Road	Completed Road as Line	4WD
Closed Roads	Planned Fuel Break	Paved Road
Trail	Planned Mixed Construction Line	Gravel Road
Dip Site	Planned Road as Line	Primitive Road
Hellspot	Access or Improved Road	Closed Roads
Drop Point	Temporary Flight Restriction	Trail
Staging Area	Contained	Motorized Trail
Division Break	Uncountained	Equestrian Trail
Value at Risk	Wildfire Daily Fire Perimeter	World Hillshade
Hazard	Fire History	

Sources: Esri, Airphoto, US, DL Robinson, Robinson, NCEAS, NLS
8/2/2023 18:13
Acres from IR and GPS
North American 1983 Datum, LatLong

CENTRAL WEST ZONE
Type Three Team