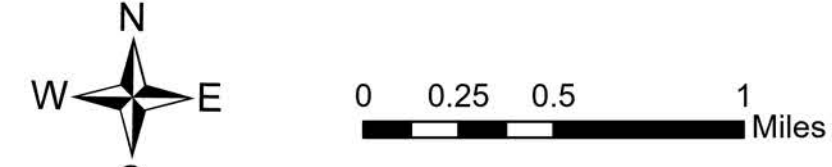


Medical Transportation

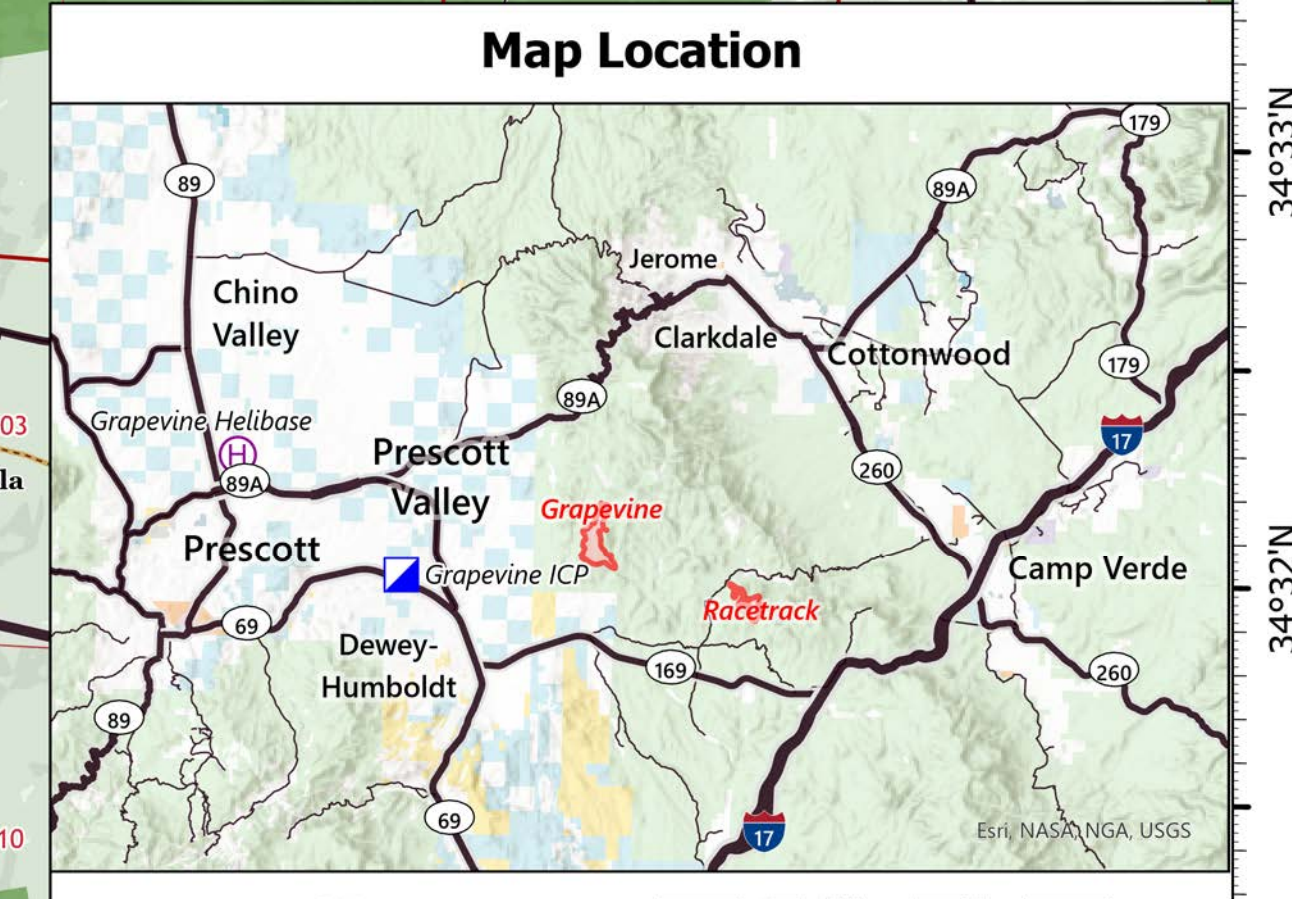
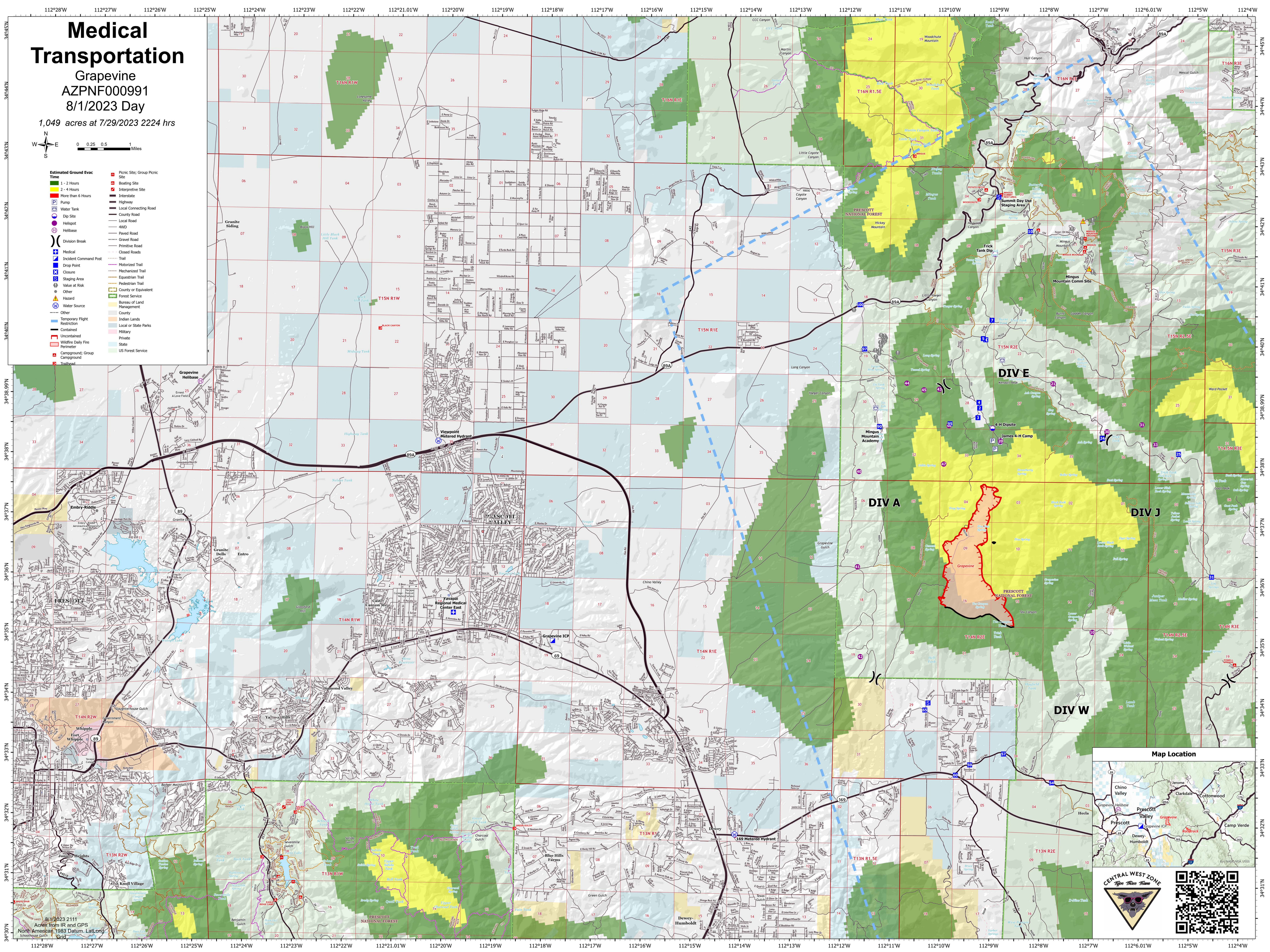
Grapevine
AZPNF000991

8/1/2023 Day

1,049 acres at 7/29/2023 2224 hrs



- Estimated Ground Evac Time**
- 1 - 2 Hours
- 2 - 4 Hours
- More than 6 Hours
- Pump
- Water Tank
- Dip Site
- Helispot
- Helibase
- Division Break
- Medical
- Incident Command Post
- Drop Point
- Closure
- Staging Area
- Value at Risk
- Other
- Hazard
- Water Source
- Other
- Temporary Flight Restriction
- Contained
- Uncontained
- Wildfire Daily Fire Perimeter
- Campground; Group Campground
- Trailhead
- Picnic Site; Group Picnic Site
- Boating Site
- Interpretive Site
- Interstate
- Highway
- Local Connecting Road
- County Road
- Local Road
- 4WD
- Paved Road
- Gravel Road
- Primitive Road
- Closed Roads
- Trail
- Motorized Trail
- Mechanized Trail
- Equestrian Trail
- Pedestrian Trail
- County or Equivalent
- Forest Service
- Bureau of Land Management
- County
- Indian Lands
- Local or State Parks
- Military
- Private
- State
- US Forest Service



8/1/2023 2111
Acres from IR and GPS
North American 1983 Datum, LALong
Spheroid