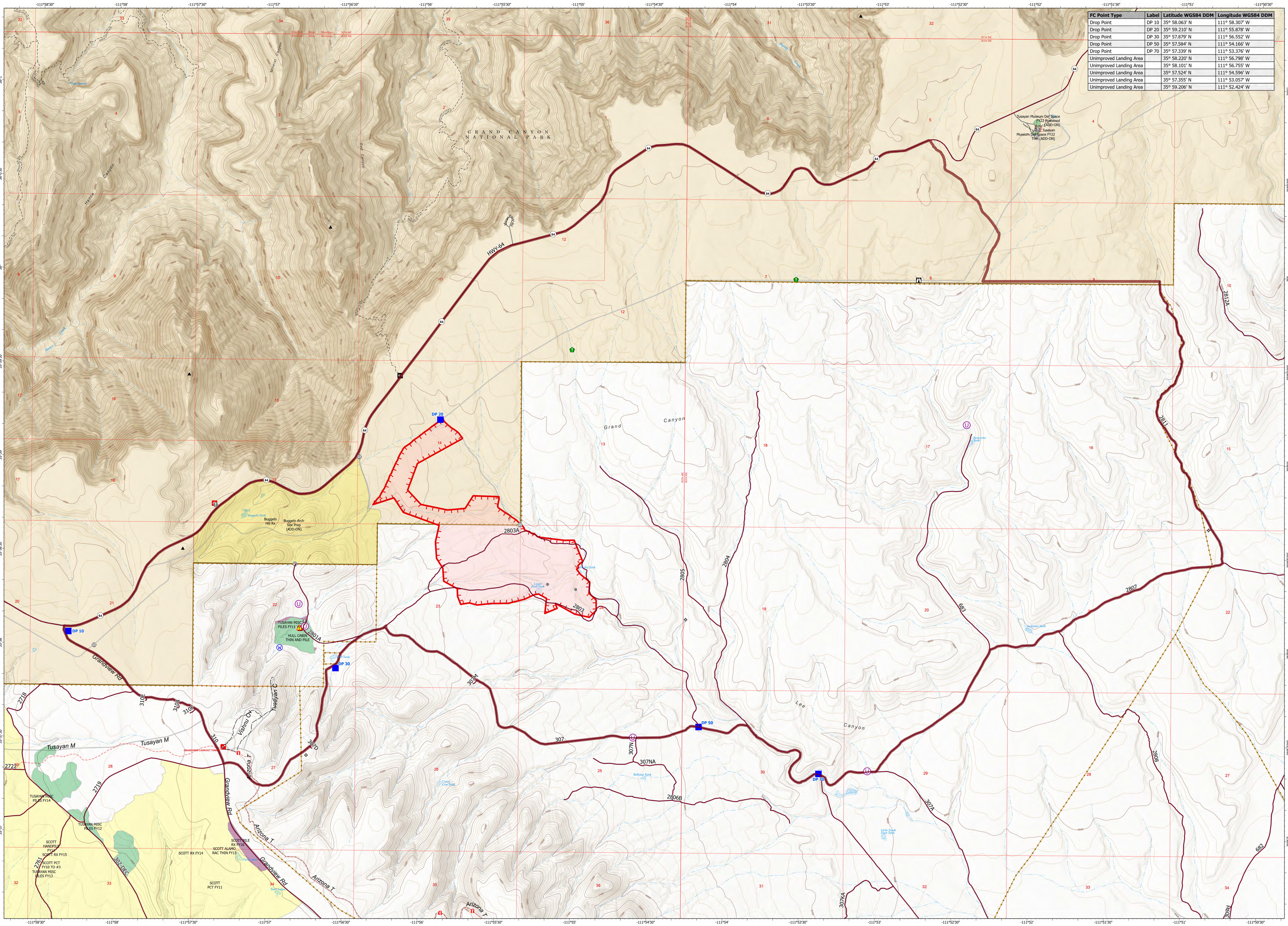


FC Point Type	Label	Latitude WGS84 DDM	Longitude WGS84 DDM
Drop Point	DP 10	35° 58.063' N	111° 58.307' W
Drop Point	DP 20	35° 59.210' N	111° 55.878' W
Drop Point	DP 30	35° 57.879' N	111° 56.552' W
Drop Point	DP 50	35° 57.584' N	111° 54.166' W
Drop Point	DP 70	35° 57.339' N	111° 53.376' W
Unimproved Landing Area		35° 58.200' N	111° 56.790' W
Unimproved Landing Area		35° 58.101' N	111° 56.755' W
Unimproved Landing Area		35° 57.524' N	111° 54.596' W
Unimproved Landing Area		35° 57.355' N	111° 53.057' W
Unimproved Landing Area		35° 59.206' N	111° 52.424' W



**Hull
OPS MAP
AZKNF 000336**

Operational Period 06/16/2023



GIS Acres 359
Acres from GIS
Effective @ 06/15/2023 1600hr
NAD 1983 UTM Zone 12N



- Unimproved Landing Area
- Drop Point
- Lookout
- Value at Risk
- Other
- Gate
- Resource Location
- Hazard
- Water Source
- Proposed Planning Area
- Wildfire Daily Fire Perimeter
- Fire - Other
- Mechanical
- Trick Tank
- Polylines
- Fences

