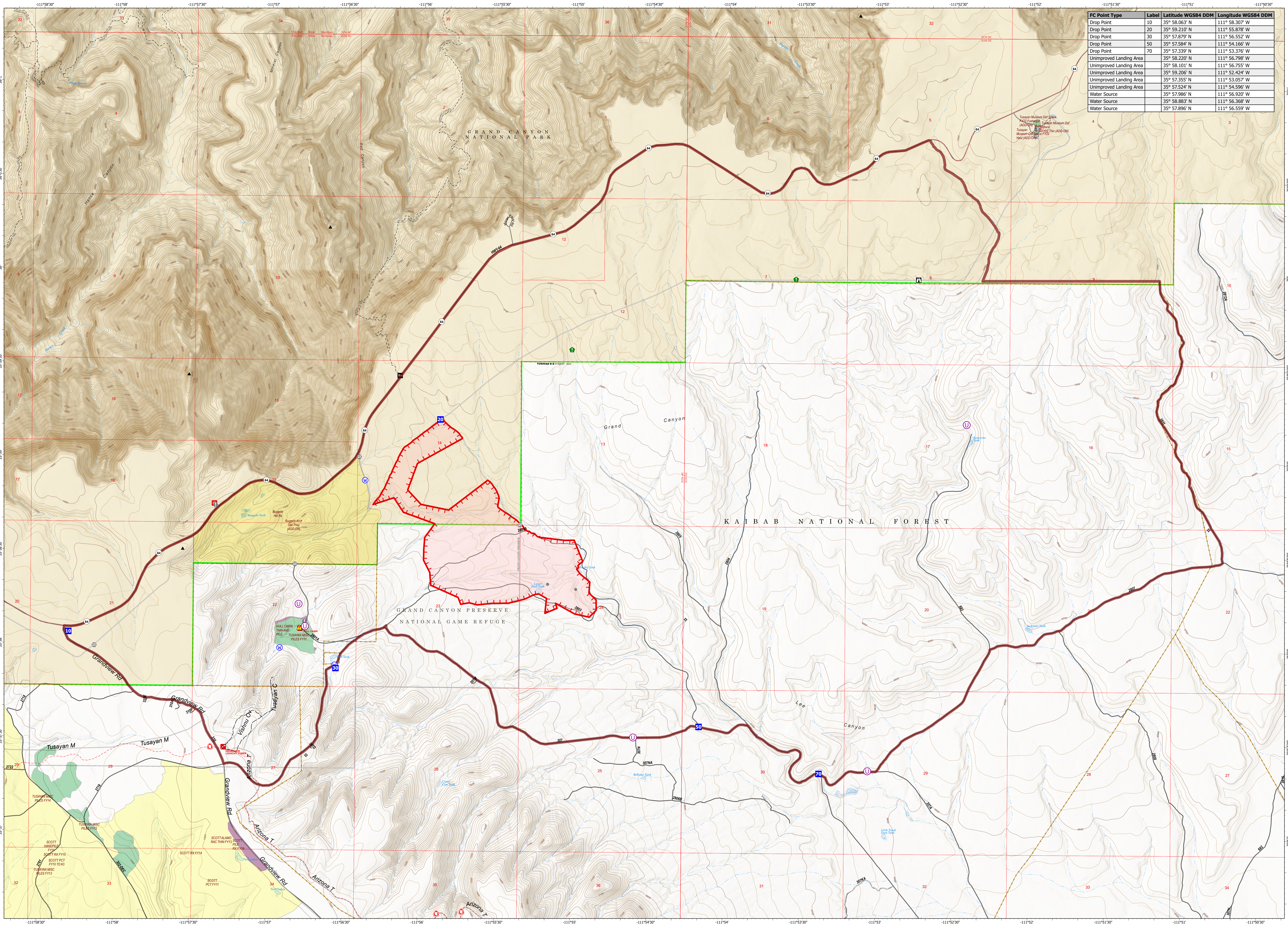


FC Point Type	Label	Latitude WGS84 DDM	Longitude WGS84 DDM
Drop Point	10	35° 58.063' N	111° 58.307' W
Drop Point	20	35° 59.210' N	111° 55.878' W
Drop Point	30	35° 57.879' N	111° 56.552' W
Drop Point	50	35° 57.584' N	111° 54.166' W
Drop Point	70	35° 57.239' N	111° 53.376' W
Unimproved Landing Area		35° 58.209' N	111° 56.798' W
Unimproved Landing Area		35° 58.101' N	111° 56.755' W
Unimproved Landing Area		35° 59.206' N	111° 52.424' W
Unimproved Landing Area		35° 57.355' N	111° 53.057' W
Unimproved Landing Area		35° 57.524' N	111° 54.596' W
Water Source		35° 57.986' N	111° 56.920' W
Water Source		35° 58.883' N	111° 56.368' W
Water Source		35° 57.896' N	111° 56.559' W



**Hull
OPS MAP
AZKNF 000336**

Operational Period 06/17/2023

GIS Acres 391
Acres from GPS
Effective @ 06/16/2023 1845 hrs

NAD 1983 UTM Zone 12N

0 0.25
Miles

- ⓪ Unimproved Landing Area
- Drop Point
- Ⓜ Lookout
- Value at Risk
- Other

- Gate
- Resource Location
- ⚠ Hazard
- Water Source
- Ⓜ Uncontained

- Proposed Planning Area
- Prescribed Fire
- Wildfire Daily Fire Perimeter
- Cabin

- ⊕ Trick Tank
- Fire - Broadcast Burn
- Fire - Other
- Mechanical Tx

- Proclaimed FS Boundary
- Ranger District Boundary
- Other Designated Boundary

- Approved or Proclamation Boundary, NPS
- National Park Service Lands