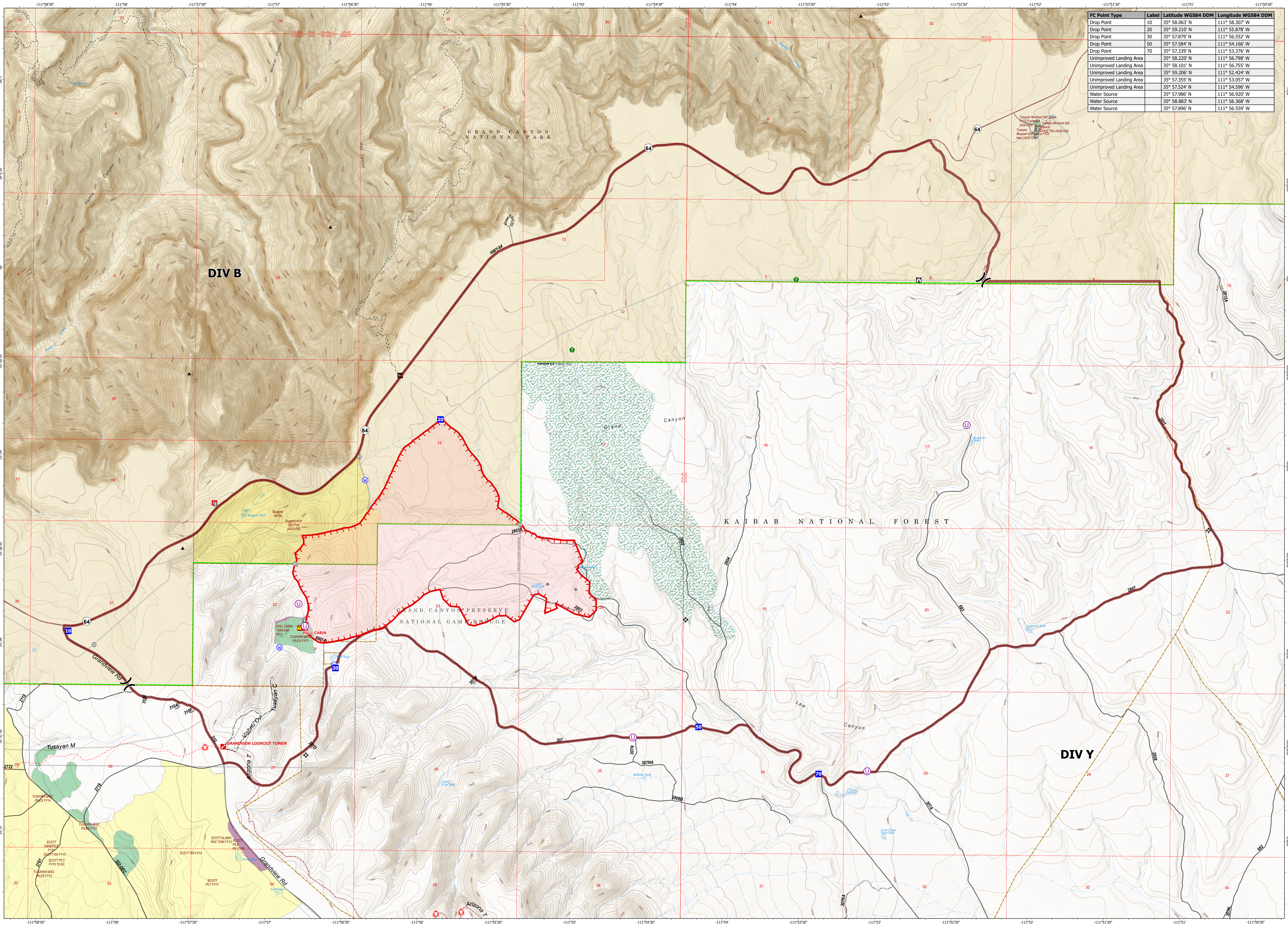


FC Point Type	Label	Latitude WGS84 DDM	Longitude WGS84 DDM
Drop Point	10	35° 58.063' N	111° 58.307' W
Drop Point	20	35° 59.210' N	111° 55.878' W
Drop Point	30	35° 57.879' N	111° 56.552' W
Drop Point	50	35° 57.584' N	111° 54.166' W
Drop Point	70	35° 57.239' N	111° 53.376' W
Unimproved Landing Area		35° 58.200' N	111° 56.798' W
Unimproved Landing Area		35° 58.101' N	111° 56.755' W
Unimproved Landing Area		35° 59.206' N	111° 52.424' W
Unimproved Landing Area		35° 57.355' N	111° 53.057' W
Unimproved Landing Area		35° 57.524' N	111° 54.596' W
Water Source		35° 57.986' N	111° 56.920' W
Water Source		35° 58.883' N	111° 56.368' W
Water Source		35° 57.896' N	111° 56.559' W



Hull OPS MAP
AZKNF 000336
Operational Period 06/18/2023

GIS Acres 832
Acres from GPS
Effective @ 06/17/2023 1800 hrs
NAD 1983 UTM Zone 12N

0 0.25 Miles

- ⊙ Unimproved Landing Area
- ⌋ Division Break
- Drop Point
- ⌚ Lookout
- ⊙ Value at Risk

- Other
- ⊙ Gate
- ⬆ Resource Location
- ⚠ Hazard
- 💧 Water Source
- ⊙ Uncontained

- ▬ Proposed Planning Area
- ▬ Prescribed Fire
- ▬ Wildfire Daily Fire Perimeter
- ⊠ Cabin
- ⊠ Trick Tank
- ▬ Fire - Broadcast Burn
- ▬ Fire - Other
- ▬ Mechanical Tx

- ▬ Proclaimed FS Boundary
- ▬ Ranger District Boundary
- ▬ Other Designated Boundary
- ▬ Approved or Proclamation Boundary, NPS
- ▬ National Park Service Lands