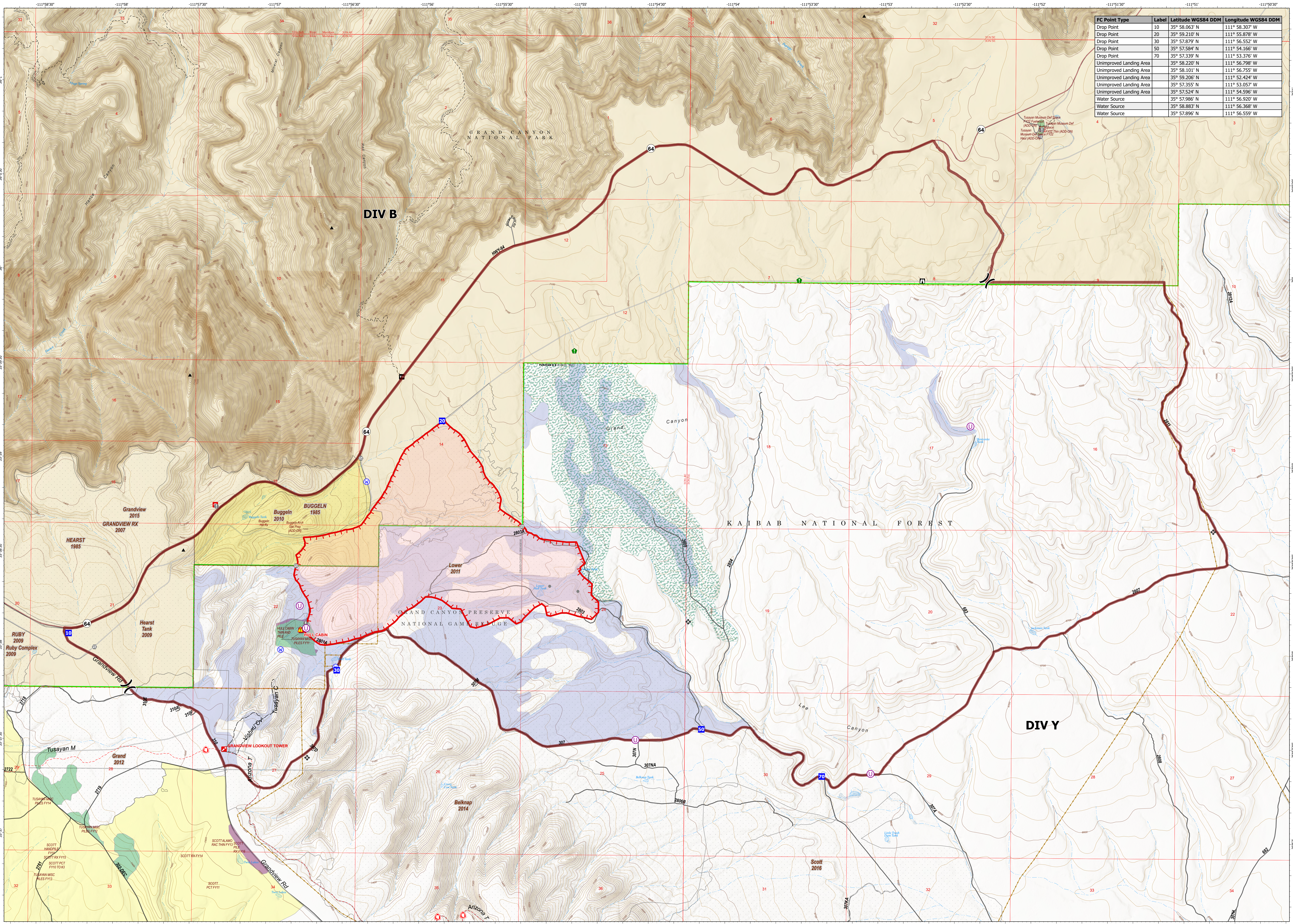


FC Point Type	Label	Latitude WGS84 DDM	Longitude WGS84 DDM
Drop Point	10	35° 58.063' N	111° 58.307' W
Drop Point	20	35° 59.210' N	111° 55.878' W
Drop Point	30	35° 57.879' N	111° 56.552' W
Drop Point	50	35° 57.584' N	111° 54.166' W
Drop Point	70	35° 57.339' N	111° 53.376' W
Unimproved Landing Area		35° 58.220' N	111° 56.798' W
Unimproved Landing Area		35° 58.101' N	111° 56.755' W
Unimproved Landing Area		35° 59.206' N	111° 52.424' W
Unimproved Landing Area		35° 57.355' N	111° 53.057' W
Unimproved Landing Area		35° 57.524' N	111° 54.596' W
Water Source		35° 57.986' N	111° 56.920' W
Water Source		35° 58.883' N	111° 56.368' W
Water Source		35° 57.896' N	111° 56.559' W



Hull OPS MAP
AZKNF 000336

Operational Period 06/19/2023

GIS Acres 841
Acres from GPS
Effective @ 06/18/2023 1800 hrs

NAD 1983 UTM Zone 12N

0 0.25
Miles

Unimproved Landing Area	Value at Risk	Water Source	Wildfire Daily Fire Perimeter	Fire - Broadcast Burn	Proclaimed FS Boundary	Approved or Proclamation Boundary, NPS
Division Break	Other	Uncontained	Cabin	Fire - Other	Ranger District Boundary	National Park Service Lands
Drop Point	Gate	Proposed Planning Area	Trick Tank	Mechanical Tx	Other Designated Boundary	
Lookout	Resource Location	Prescribed Fire	Fences	Wildfire History		
	Hazard			Ponderosa Pine		