

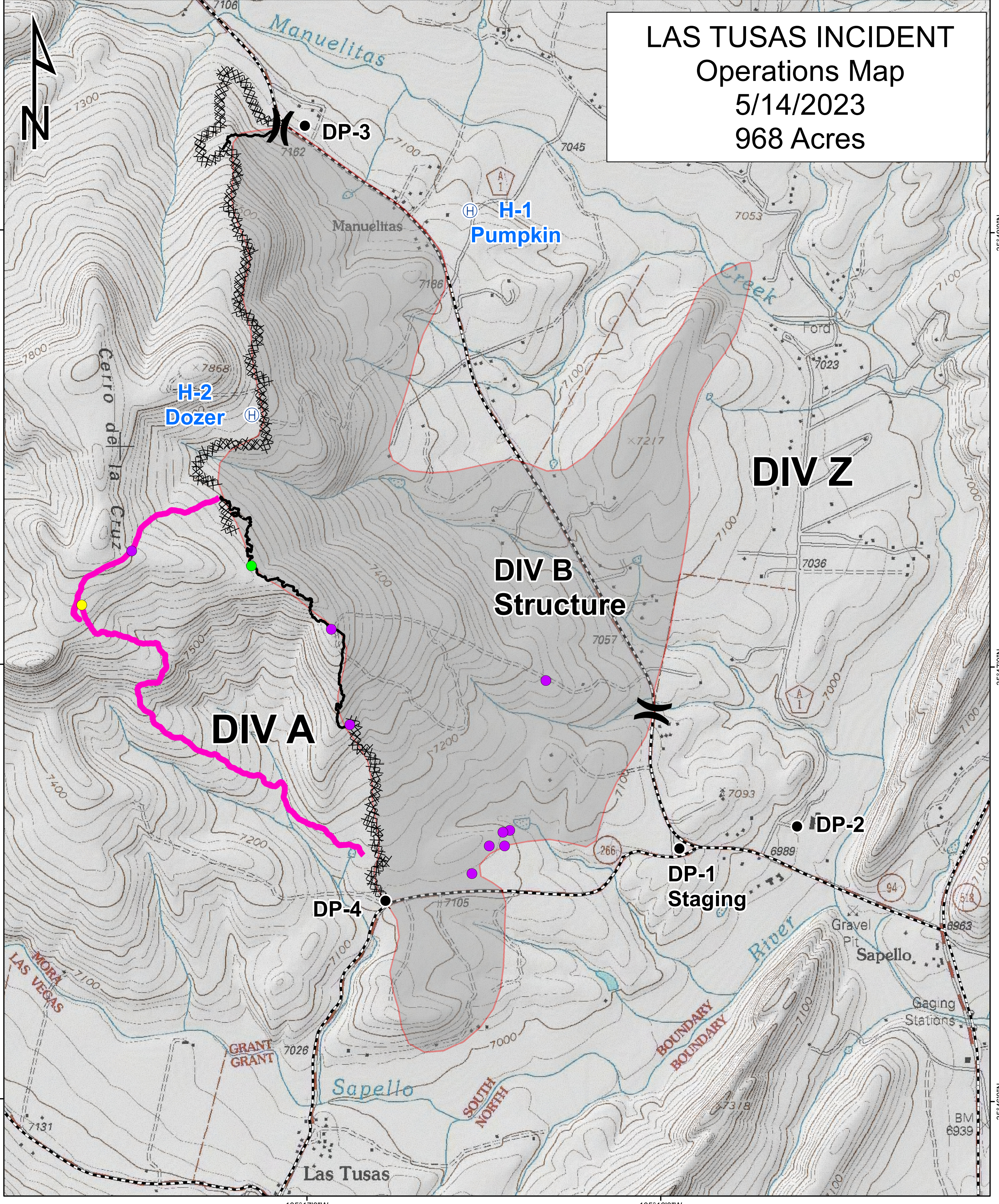
105°17'0"W

105°16'0"W

LAS TUSAS INCIDENT

Operations Map

5/14/2023
968 Acres



Legend

- LZ - not approved
- Fence Cut
- Fence Down
- X Division Break
- Drop Point
- ⊗ Fire Origin
- H Heli Spot
- Handline
- Dozer Line
- US Hwy
- State Hwy
- Interstate
- LAS TUSAS FIRE
- County Road
- State Hwy
- Improved Road

1:10,000

WJEaton 5/13/2022 2320hrs