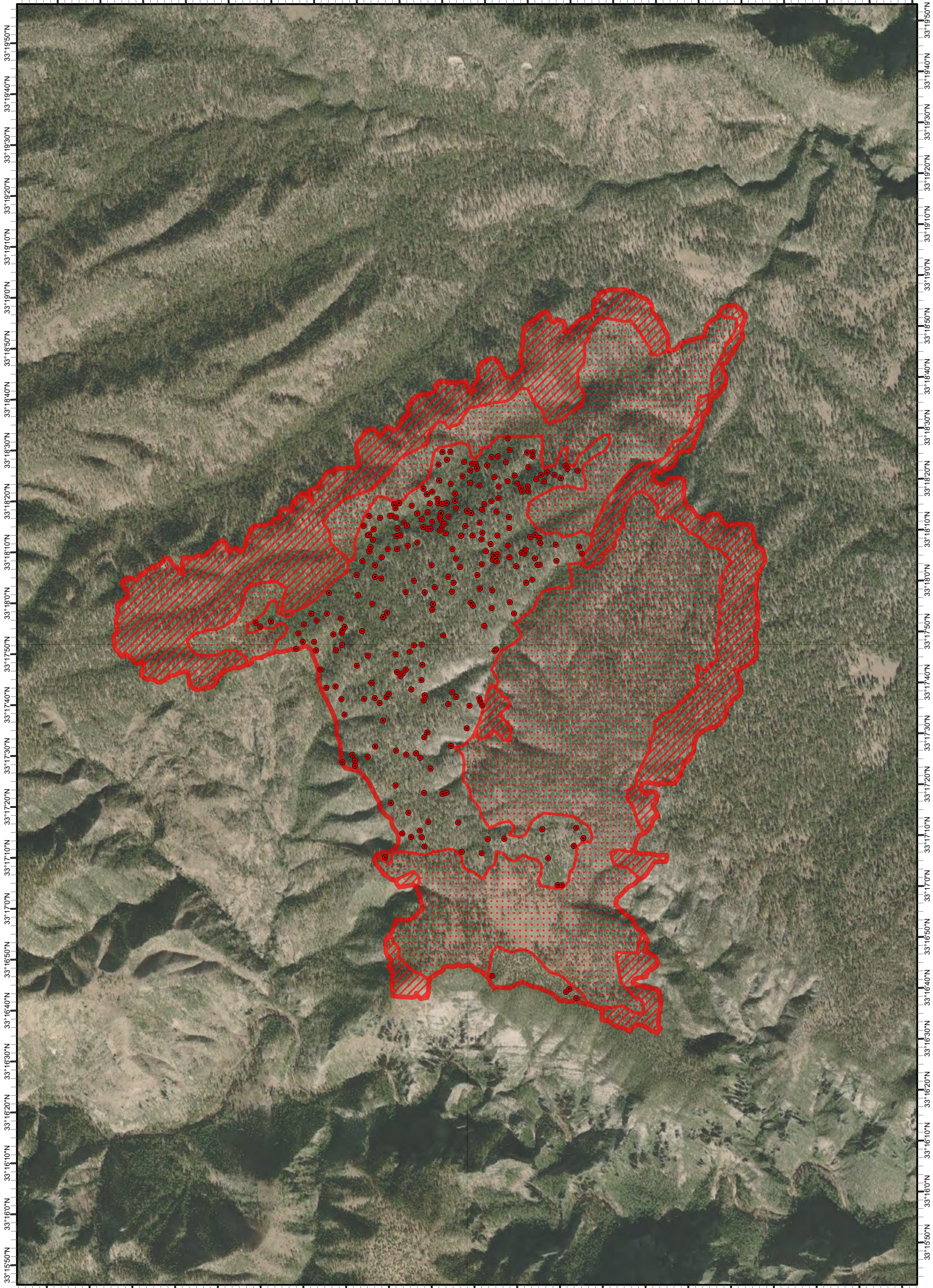


108°24'40"W 108°24'30"W 108°24'20"W 108°24'10"W 108°24'0"W 108°23'50"W 108°23'40"W 108°23'30"W 108°23'20"W 108°23'10"W 108°23'0"W 108°22'50"W 108°22'40"W 108°22'30"W 108°22'20"W 108°22'10"W 108°22'0"W 108°21'50"W 108°21'40"W 108°21'30"W 108°21'20"W



108°24'50"W 108°24'40"W 108°24'30"W 108°24'20"W 108°24'10"W 108°24'0"W 108°23'50"W 108°23'40"W 108°23'30"W 108°23'20"W 108°23'10"W 108°23'0"W 108°22'50"W 108°22'40"W 108°22'30"W 108°22'20"W 108°22'10"W 108°22'0"W 108°21'50"W 108°21'40"W 108°21'30"W 108°21'20"W

**Fire Name**

NM-GNF-000447

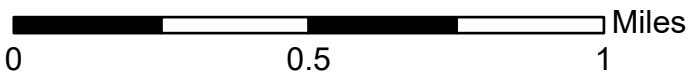
Infrared Heat Sources

07/31/2023 00:31 hrs MDT

2,231 Interpreted Acres

Print Date: 07/31/2023

IRIN: Stacy Stanish



● IR Isolated Heat Source

▭ IR Heat Perimeter

▨ IR Intense Heat

▤ IR Scattered Heat

