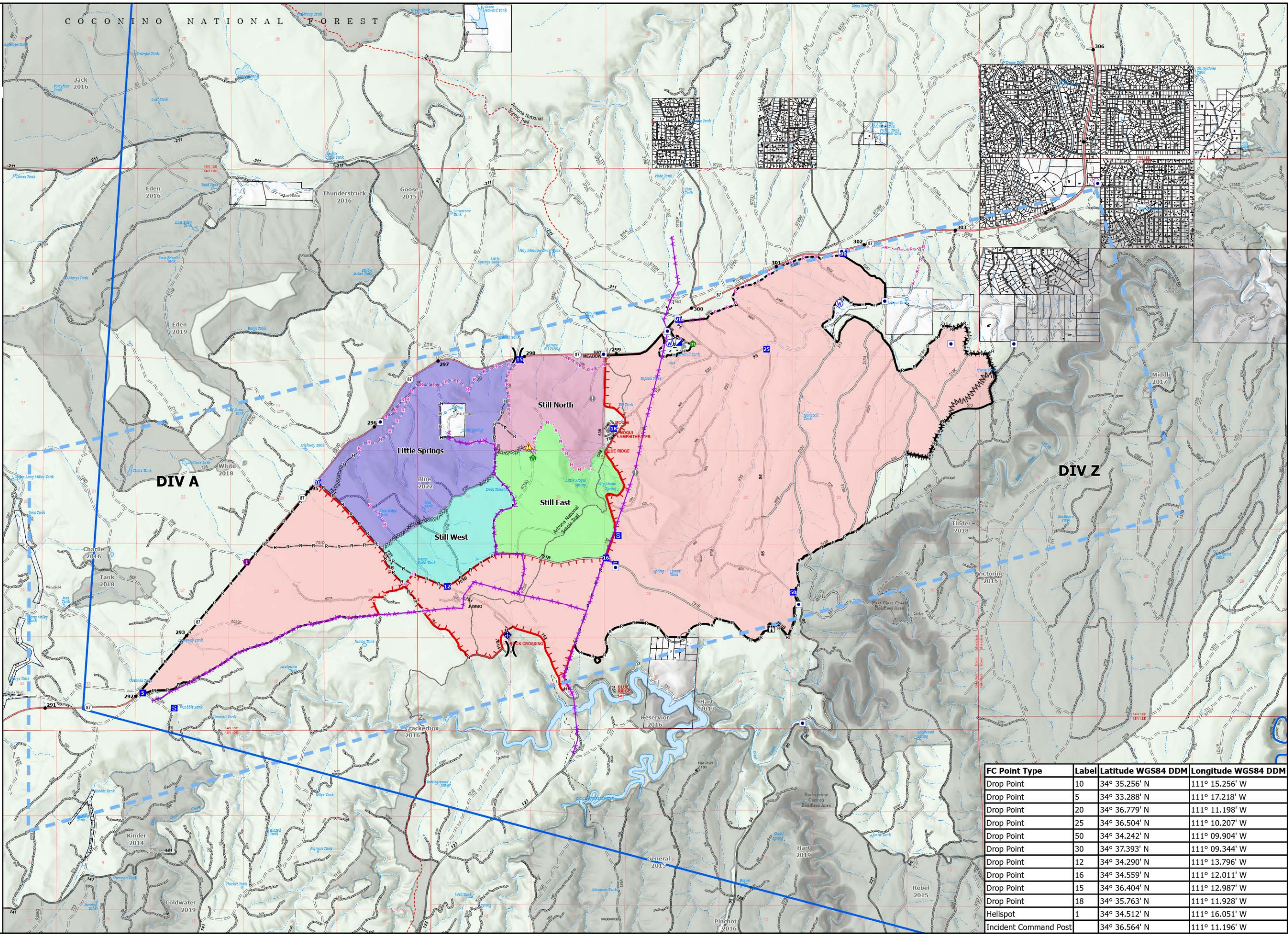


Air Operations

Still
AZCOF-001048
9,181 acres
10/11/2023

Fire perimeter updated from
Acres from IR and GPS Acres from IR and GPS on 10/7/2023
17:00 9/27/2023 17:00

- Helispot
- Ⓢ Unimproved Landing Area
-) (Division Break
- ▣ Incident Command Post
- ▣ Drop Point
- Ⓢ Staging Area
- Ⓢ Lookout
- Hot Spot - Spot Fire
- Ⓢ Value at Risk
- Ⓢ Fire Station
- Ⓢ Road Repair
- Ⓢ Fence - Cut/Damaged
- Ⓢ Mobile Weather Unit
- Ⓢ Hazard
- Ⓢ Water Source
- Ⓢ Completed Dozer Line
- Ⓢ Completed Fuel Break
- Ⓢ Completed Hand Line
- Ⓢ Completed Road as Line
- Ⓢ Planned Dozer Line
- Ⓢ Planned Fuel Break
- Ⓢ Planned Hand Line
- Ⓢ Planned Road as Line
- Ⓢ Access or Improved Road
- Ⓢ Fence
- Ⓢ Other
- Ⓢ Aerial Hazard
- Ⓢ Temporary Flight Restriction
- Ⓢ Contained
- Ⓢ Uncontained
- Ⓢ Wildfire Daily Fire Perimeter
- Ⓢ Still Additional Planned Burn Areas
- Ⓢ Little Springs
- Ⓢ Still East
- Ⓢ Still North
- Ⓢ Still West
- Ⓢ Secondary Highway
- Ⓢ Paved
- Ⓢ Gravel Road
- Ⓢ Dirt Road
- Ⓢ Unimproved Road
- Ⓢ Forest Service Roads Closed
- Ⓢ USFS Roadless Areas
- Ⓢ Forest Service Land
- Mileposts
- Ⓢ Planning Area
- Label Point
- Ⓢ Buildings
- Ⓢ Arizona National Scenic Trail
- Ⓢ Fire History
- Ⓢ Private Land Parcels



FC Point Type	Label	Latitude WGS84 DDM	Longitude WGS84 DDM
Drop Point	10	34° 35.256' N	111° 15.256' W
Drop Point	5	34° 33.288' N	111° 17.218' W
Drop Point	20	34° 36.779' N	111° 11.198' W
Drop Point	25	34° 36.504' N	111° 10.207' W
Drop Point	50	34° 34.242' N	111° 09.904' W
Drop Point	30	34° 37.393' N	111° 09.344' W
Drop Point	12	34° 34.290' N	111° 13.796' W
Drop Point	16	34° 34.559' N	111° 12.011' W
Drop Point	15	34° 36.404' N	111° 12.987' W
Drop Point	18	34° 35.763' N	111° 11.928' W
Helispot	1	34° 34.512' N	111° 16.051' W
Incident Command Post		34° 36.564' N	111° 11.196' W