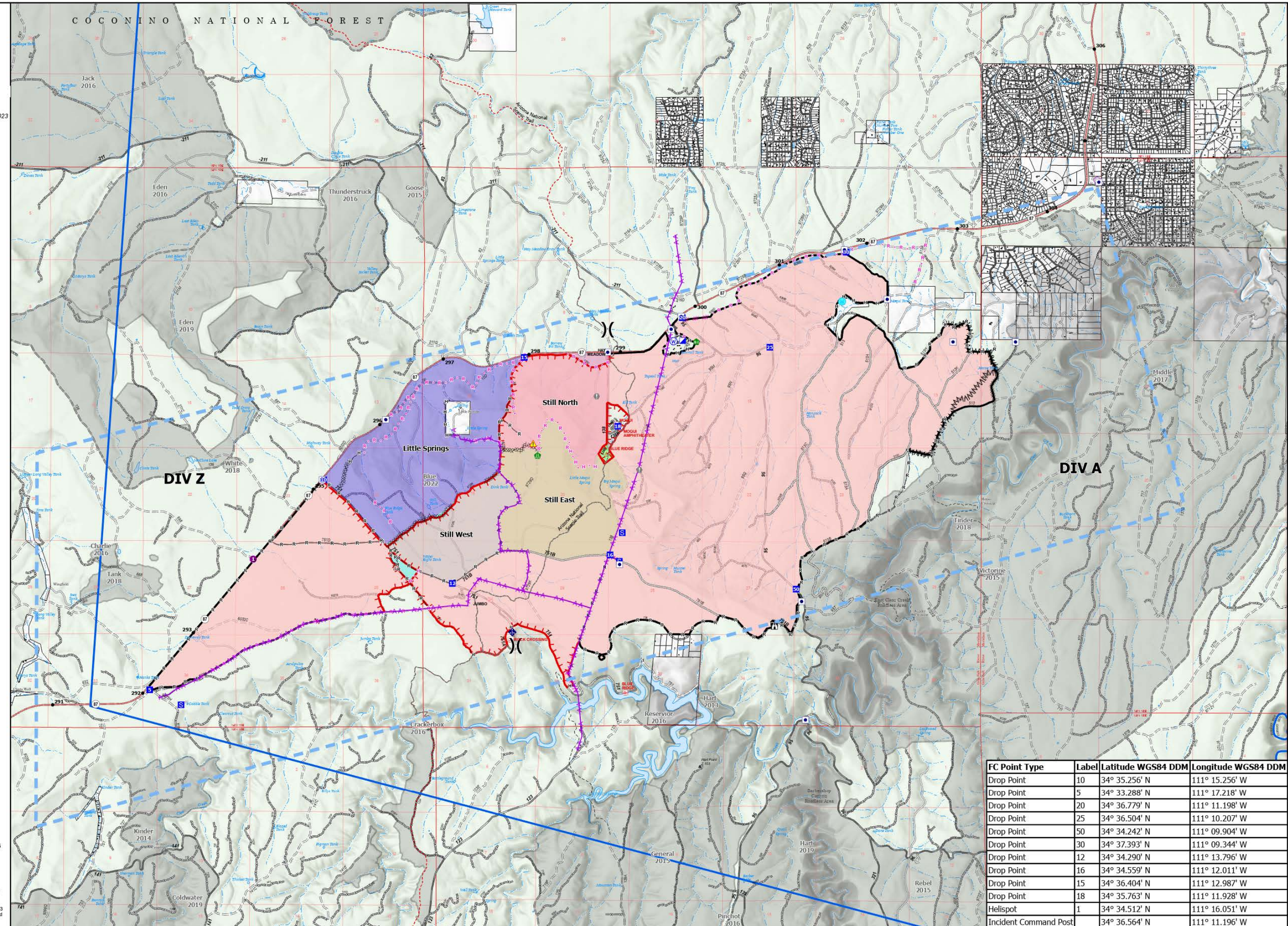
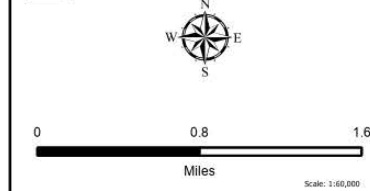


# Air Operations

Still  
AZCOF-001048  
11,225 acres  
10/13/2023

Fire perimeter updated from  
Acres from IR and GPS Acres from IR and GPS on 10/12/2023  
15:00 9/27/2023 17:00

- Helispot
- Unimproved Landing Area
- ) Division Break
- Incident Command Post
- Drop Point
- S Staging Area
- A Lookout
- V Value at Risk
- F Fire Station
- A Road Repair
- F Fence - Cut/Damaged
- M Mobile Weather Unit
- ▲ Hazard
- W Water Source
- XXXX Completed Dozer Line
- AAA Completed Fuel Break
- H—H Completed Hand Line
- R—R Completed Road as Line
- X Planned Dozer Line
- A V Planned Fuel Break
- H—H Planned Hand Line
- R—R Planned Road as Line
- Access or Improved Road
- Fence
- Other
- A Aerial Hazard
- Temporary Flight Restriction
- Contained
- Uncontained
- Wildfire Daily Fire Perimeter
- Still Additional Planned Burn Areas**
- Little Springs
- Still East
- Still North
- Still West
- Secondary Highway
- Paved
- Gravel Road
- Dirt Road
- Unimproved Road
- Forest Service Roads Closed
- USFS Roadless Areas
- Forest Service Land
- Mileposts
- Planning Area
- Label Point
- Buildings
- Arizona National Scenic Trail
- Fire History
- Private Land Parcels



FC Point Type	Label	Latitude WGS84 DDM	Longitude WGS84 DDM
Drop Point	10	34° 35.256' N	111° 15.256' W
Drop Point	5	34° 33.288' N	111° 17.218' W
Drop Point	20	34° 36.779' N	111° 11.198' W
Drop Point	25	34° 36.504' N	111° 10.207' W
Drop Point	50	34° 34.242' N	111° 09.904' W
Drop Point	30	34° 37.393' N	111° 09.344' W
Drop Point	12	34° 34.290' N	111° 13.796' W
Drop Point	16	34° 34.559' N	111° 12.011' W
Drop Point	15	34° 36.404' N	111° 12.987' W
Drop Point	18	34° 35.763' N	111° 11.928' W
Helispot	1	34° 34.512' N	111° 16.051' W
Incident Command Post		34° 36.564' N	111° 11.196' W