

114°5.5'W 114°5'W 114°4.5'W 114°4'W 114°3.5'W 114°3'W 114°2.5'W

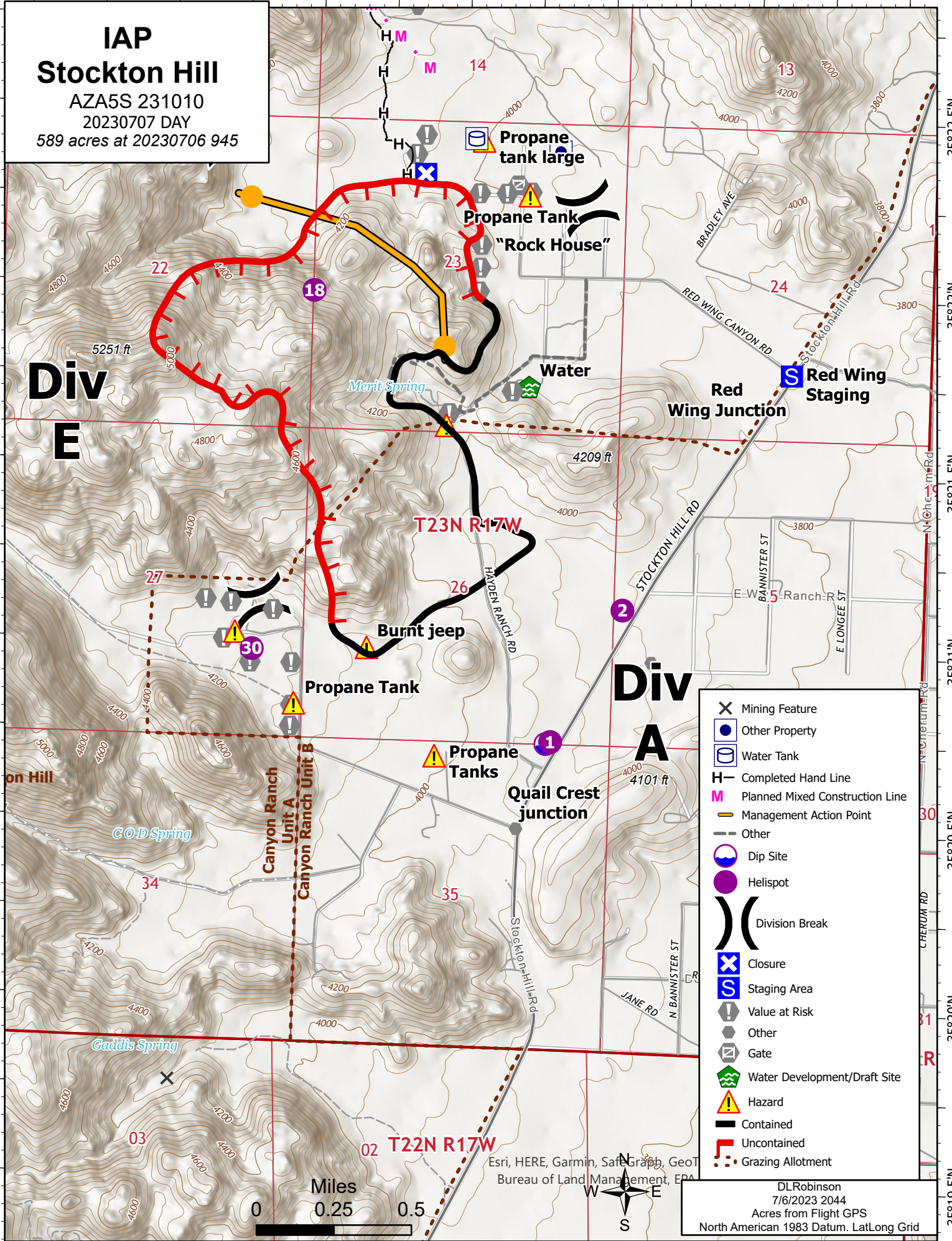
35°22.5'N 35°22'N 35°21.5'N 35°21'N 35°20.5'N 35°20'N 35°19.5'N

IAP Stockton Hill

AZA5S 231010
20230707 DAY
589 acres at 20230706 945

Div E

Div A



- Mining Feature
- Other Property
- Water Tank
- Completed Hand Line
- Planned Mixed Construction Line
- Management Action Point
- Other
- Dip Site
- Helispot
- Division Break
- Closure
- Staging Area
- Value at Risk
- Other
- Gate
- Water Development/Draft Site
- Hazard
- Contained
- Uncontained
- Grazing Allotment



Esri, HERE, Garmin, SafeGraph, GeoIT, Bureau of Land Management, EPA

DL Robinson
7/6/2023 2044
Acres from Flight GPS
North American 1983 Datum. LatLong Grid

114°5'W 114°4.5'W 114°4'W 114°3.5'W 114°3'W 114°2.5'W