

108°28.51'W 108°27.5'W 108°26.5'W 108°25.5'W 108°24.5'W 108°23.5'W 108°22.5'W 108°21.5'W 108°20.5'W 108°19.5'W 108°18.5'W 108°17.5'W 108°16.5'W 108°15.5'W 108°14.5'W 108°13.51'W 108°12.5'W 108°11.5'W

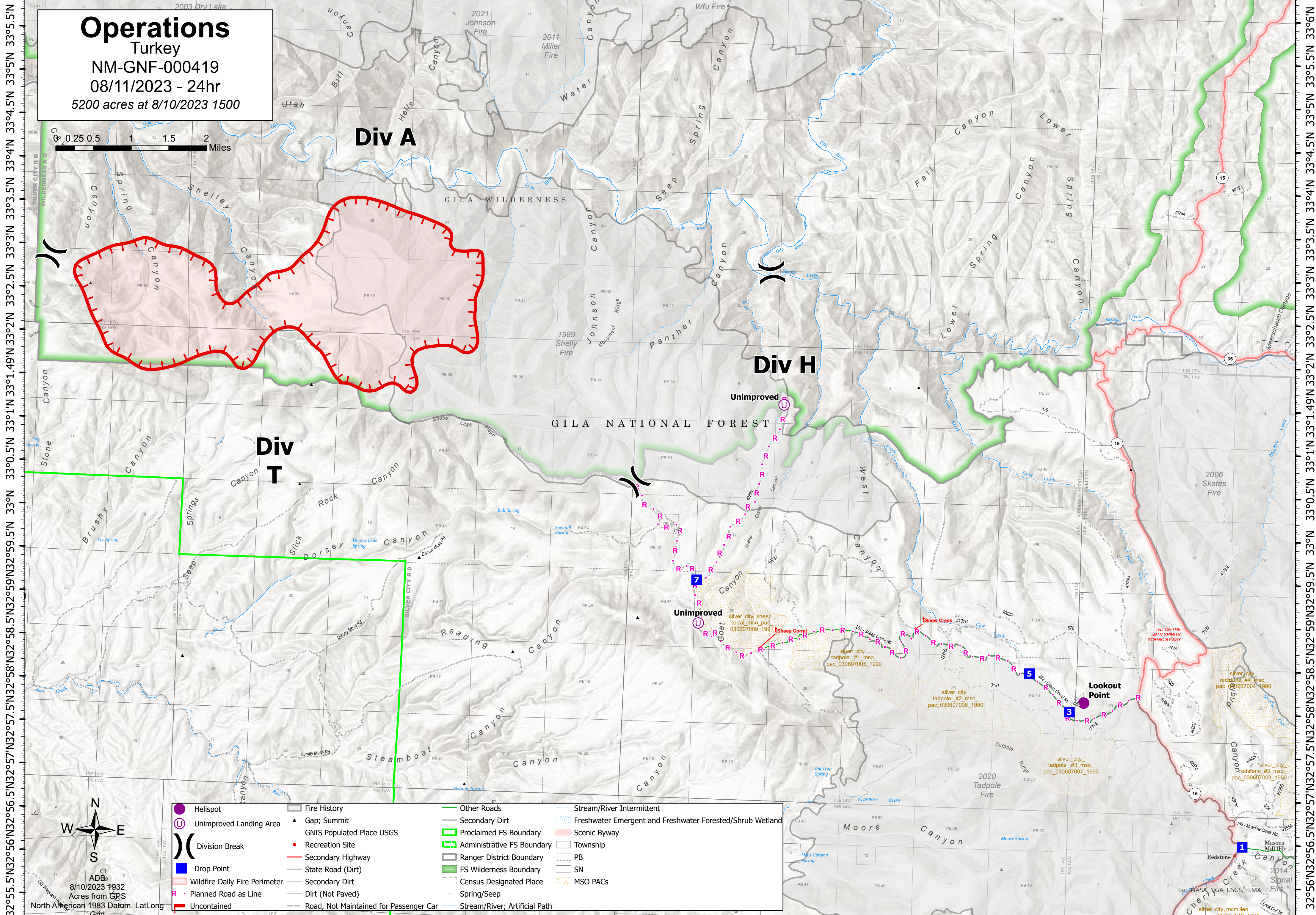
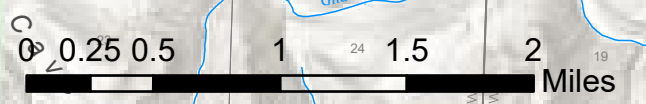
Operations

Turkey

NM-GNF-000419

08/11/2023 - 24hr

5200 acres at 8/10/2023 1500



33°55.5'N 33°56'N 33°57'N 33°58'N 33°59'N 34°00'N 34°01'N 34°02'N 34°03'N 34°04'N 34°05'N 34°06'N

108°28'W 108°27'W 108°26'W 108°25'W 108°24'W 108°23'W 108°22'W 108°21.01'W 108°20'W 108°19'W 108°18'W 108°17'W 108°16'W 108°15'W 108°14'W 108°13'W 108°12'W 108°11'W



Helispot	Fire History	Other Roads	Stream/River Intermittent
Unimproved Landing Area	Gap; Summit	Proclaimed FS Boundary	Freshwater Emergent and Freshwater Forested/Shrub Wetland
Division Break	GNIS Populated Place USGS	Administrative FS Boundary	Scenic Byway
Drop Point	Recreation Site	Ranger District Boundary	Township
Wildfire Daily Fire Perimeter	Secondary Highway	FS Wilderness Boundary	PB
Planned Road as Line	State Road (Dirt)	Census Designated Place	SN
Uncontained	Secondary Dirt	MSO PACs	
	Dirt (Not Paved)		
	Road, Not Maintained for Passenger Car		
	Stream/River; Artificial Path		

8/10/2023 1932 Acres from GPS
North American 1983 Datum. Lat/Long Grid