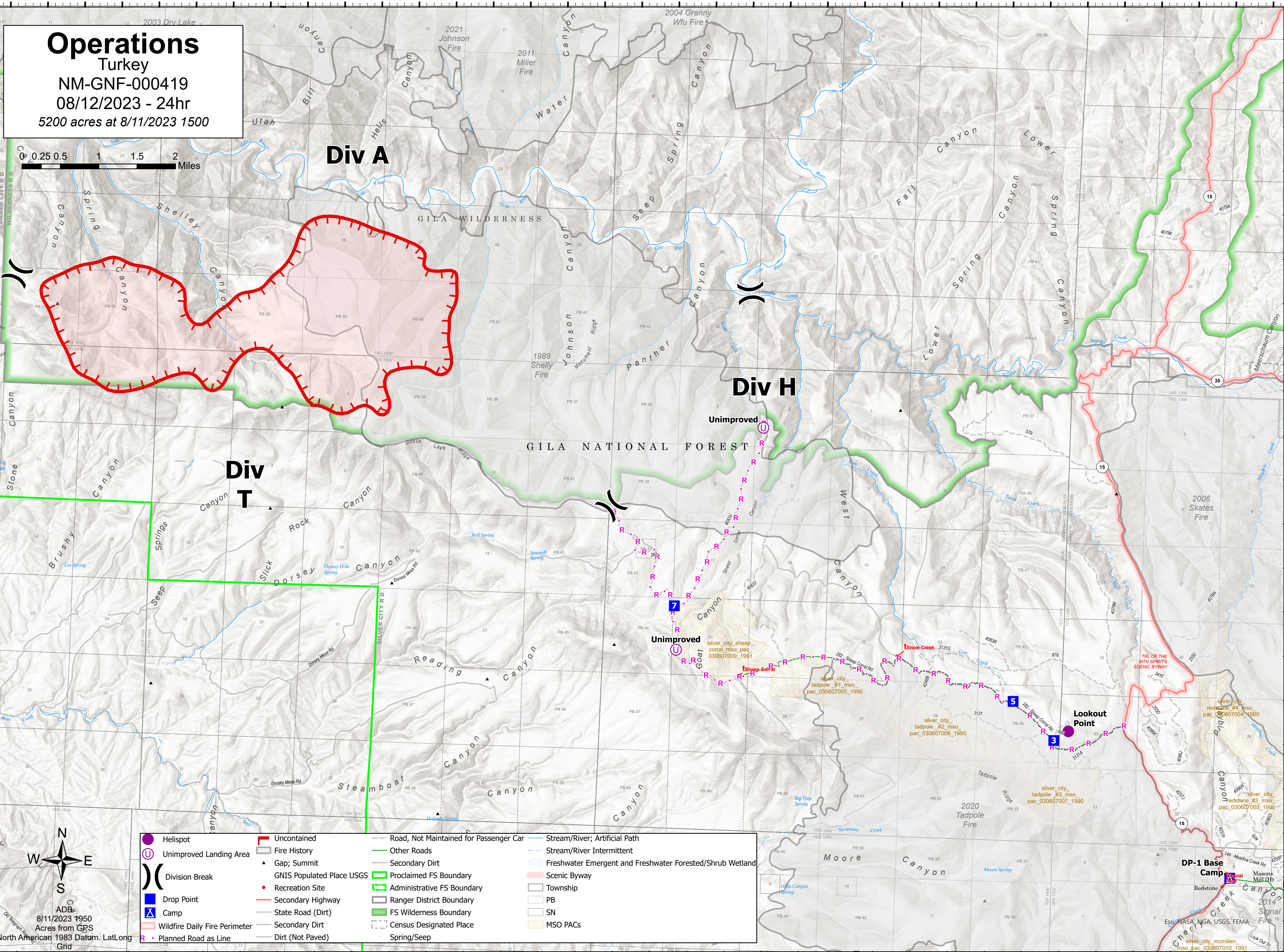
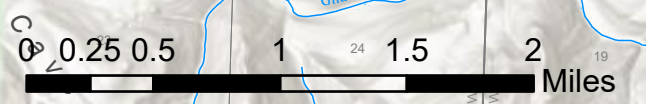


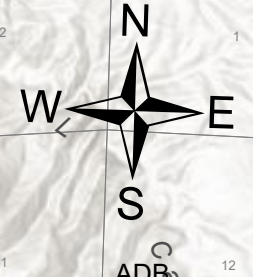
108°28.51'W 108°27.5'W 108°26.5'W 108°25.5'W 108°24.5'W 108°23.5'W 108°22.5'W 108°21.5'W 108°20.5'W 108°19.5'W 108°18.5'W 108°17.5'W 108°16.5'W 108°15.5'W 108°14.5'W 108°13.51'W 108°12.5'W 108°11.5'W

33°55.5'N 33°54.5'N 33°53.5'N 33°52.5'N 33°51.49'N 33°50.5'N 33°49.5'N 33°48.5'N 33°47.5'N 33°46.5'N 33°45.5'N 33°44.5'N 33°43.5'N 33°42.5'N 33°41.5'N 33°40.5'N 33°39.5'N 33°38.5'N 33°37.5'N 33°36.5'N 33°35.5'N 33°34.5'N 33°33.5'N 33°32.5'N 33°31.5'N 33°30.5'N 33°29.5'N 33°28.5'N 33°27.5'N 33°26.5'N 33°25.5'N 33°24.5'N 33°23.5'N 33°22.5'N 33°21.5'N 33°20.5'N 33°19.5'N 33°18.5'N 33°17.5'N 33°16.5'N 33°15.5'N 33°14.5'N 33°13.5'N 33°12.5'N 33°11.5'N 33°10.5'N 33°9.5'N 33°8.5'N 33°7.5'N 33°6.5'N 33°5.5'N 33°4.5'N 33°3.5'N 33°2.5'N 33°1.5'N 33°0.5'N 33°0'N 32°59.5'N 32°58.5'N 32°57.5'N 32°56.5'N

**Operations**  
Turkey  
NM-GNF-000419  
08/12/2023 - 24hr  
5200 acres at 8/11/2023 1500



- Helispot
- Unimproved Landing Area
- Division Break
- Drop Point
- Camp
- Wildfire Daily Fire Perimeter
- Planned Road as Line
- Uncontained
- Fire History
- Gap; Summit
- GNIS Populated Place USGS
- Recreation Site
- Secondary Highway
- State Road (Dirt)
- Secondary Dirt
- Dirt (Not Paved)
- Road, Not Maintained for Passenger Car
- Other Roads
- Secondary Dirt
- Proclaimed FS Boundary
- Administrative FS Boundary
- Ranger District Boundary
- Census Designated Place
- Spring/Seep
- Stream/River; Artificial Path
- Stream/River Intermittent
- Freshwater Emergent and Freshwater Forested/Shrub Wetland
- Scenic Byway
- Township
- PB
- SN
- MSO PACs



ADB  
8/11/2023 1950  
Acres from GPS  
North American 1983 Datum. LatLong  
Grid

108°28'W 108°27'W 108°26'W 108°25'W 108°24'W 108°23'W 108°22'W 108°21.01'W 108°20'W 108°19'W 108°18'W 108°17'W 108°16'W 108°15'W 108°14'W 108°13'W 108°12'W 108°11'W

32°56'N 32°55'N 32°54'N 32°53'N 32°52'N 32°51'N 32°50'N 32°49'N 32°48'N 32°47'N 32°46'N 32°45'N 32°44'N 32°43'N 32°42'N 32°41'N 32°40'N 32°39'N 32°38'N 32°37'N 32°36'N 32°35'N 32°34'N 32°33'N 32°32'N 32°31'N 32°30'N 32°29'N 32°28'N 32°27'N 32°26'N 32°25'N 32°24'N 32°23'N 32°22'N 32°21'N 32°20'N 32°19'N 32°18'N 32°17'N 32°16'N 32°15'N 32°14'N 32°13'N 32°12'N 32°11'N 32°10'N 32°9'N 32°8'N 32°7'N 32°6'N 32°5'N 32°4'N 32°3'N 32°2'N 32°1'N 32°0'N 31°59'N 31°58'N 31°57'N 31°56'N