

108°28.51'W 108°27.5'W 108°26.5'W 108°25.5'W 108°24.5'W 108°23.5'W 108°22.5'W 108°21.5'W 108°20.5'W 108°19.5'W 108°18.5'W 108°17.5'W 108°16.5'W 108°15.5'W 108°14.5'W 108°13.51'W 108°12.5'W 108°11.5'W

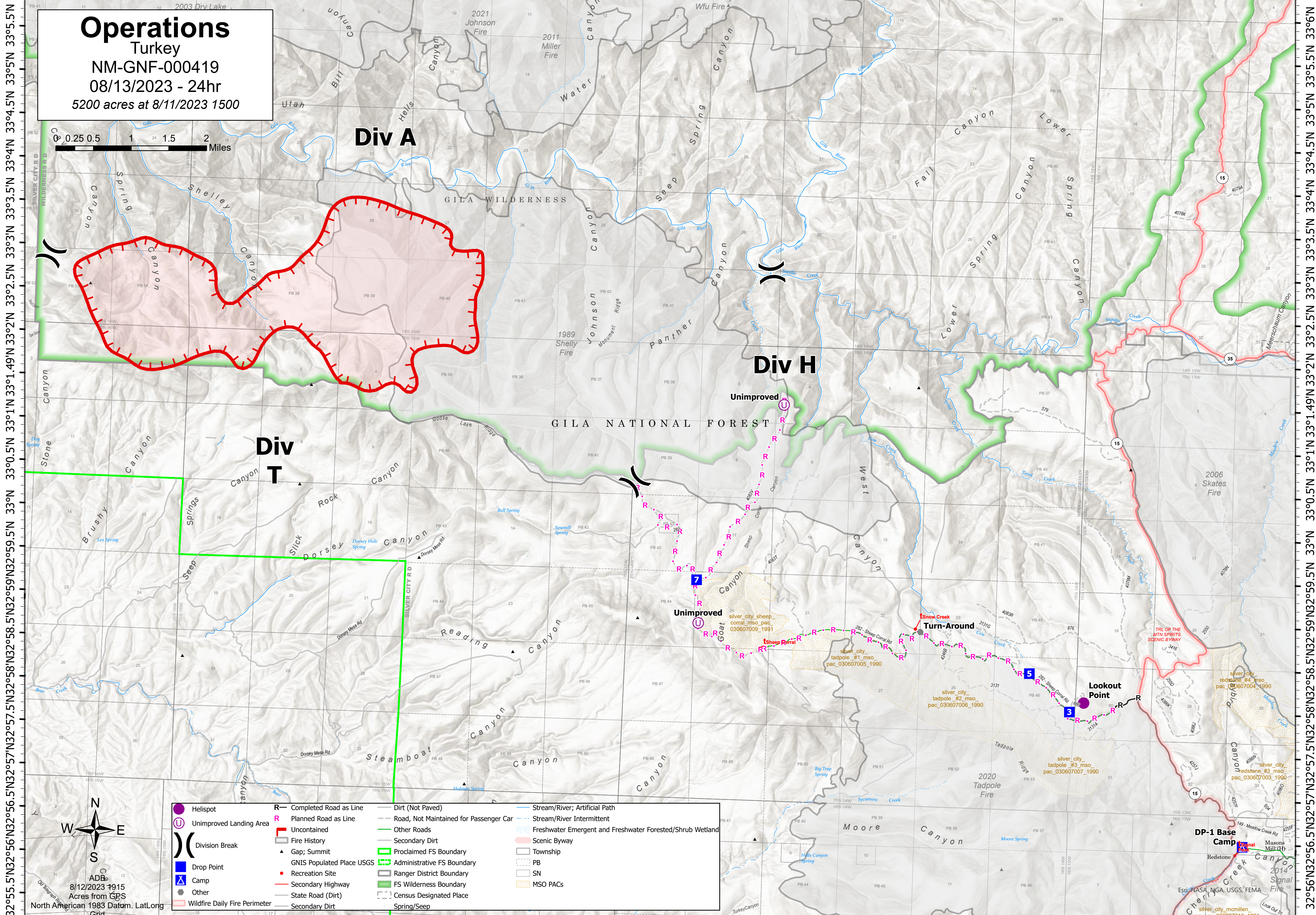
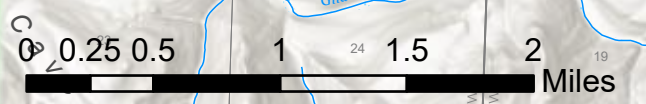
Operations

Turkey

NM-GNF-000419

08/13/2023 - 24hr

5200 acres at 8/11/2023 1500



33°55.5'N 33°54.5'N 33°53.5'N 33°52.5'N 33°51.49'N 33°50.5'N 33°49.5'N 33°48.5'N 33°47.5'N 33°46.5'N 33°45.5'N 33°44.5'N 33°43.5'N 33°42.5'N 33°41.5'N 33°40.5'N 33°39.5'N 33°38.5'N 33°37.5'N 33°36.5'N 33°35.5'N 33°34.5'N 33°33.5'N 33°32.5'N 33°31.5'N 33°30.5'N 33°29.5'N 33°28.5'N 33°27.5'N 33°26.5'N 33°25.5'N 33°24.5'N 33°23.5'N 33°22.5'N 33°21.5'N 33°20.5'N 33°19.5'N 33°18.5'N 33°17.5'N 33°16.5'N 33°15.5'N 33°14.5'N 33°13.5'N 33°12.5'N 33°11.5'N

108°28'W 108°27'W 108°26'W 108°25'W 108°24'W 108°23'W 108°22'W 108°21.01'W 108°20'W 108°19'W 108°18'W 108°17'W 108°16'W 108°15'W 108°14'W 108°13'W 108°12'W 108°11'W



	Helispot		Completed Road as Line		Dirt (Not Paved)		Stream/River; Artificial Path
	Unimproved Landing Area		Planned Road as Line		Road, Not Maintained for Passenger Car		Stream/River Intermittent
	Division Break		Uncontained Fire History		Other Roads		Freshwater Emergent and Freshwater Forested/Shrub Wetland
	Drop Point		Gap; Summit		Secondary Dirt		Scenic Byway
	Camp		GNIS Populated Place USGS		Proclaimed FS Boundary		Township
	Other		Recreation Site		Administrative FS Boundary		PB
	Wildfire Daily Fire Perimeter		Secondary Highway		Ranger District Boundary		SN
			State Road (Dirt)		FS Wilderness Boundary		MSO PACS
			Secondary Dirt		Spring/Seep		

8/12/2023 1915
Acres from GPS
North American 1983 Datum, LatLong Grid