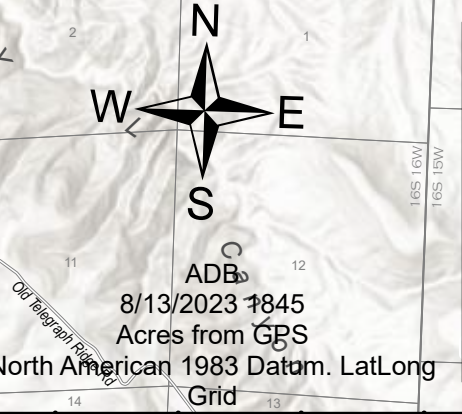
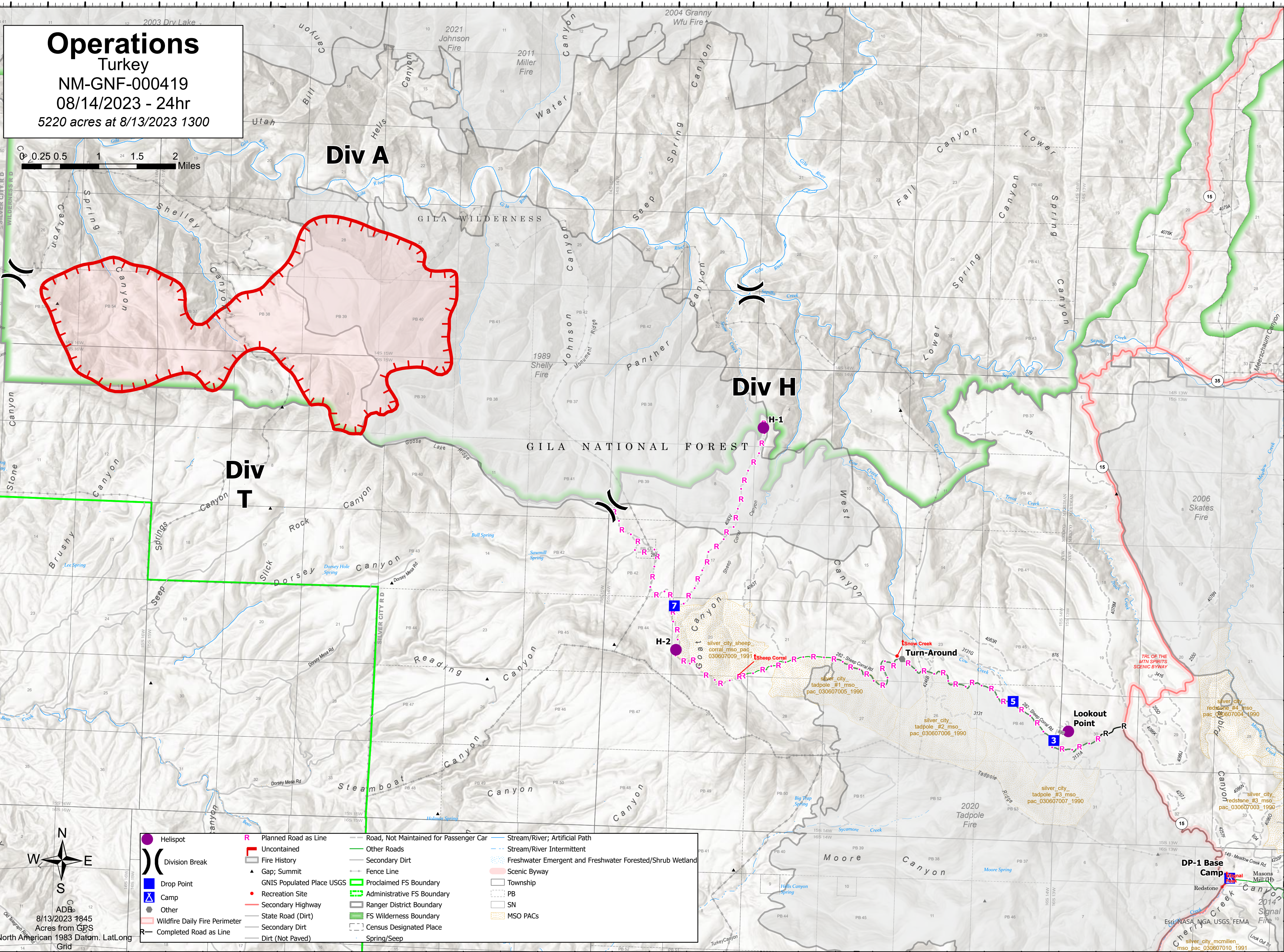


108°28.51'W 108°27.5'W 108°26.5'W 108°25.5'W 108°24.5'W 108°23.5'W 108°22.5'W 108°21.5'W 108°20.5'W 108°19.5'W 108°18.5'W 108°17.5'W 108°16.5'W 108°15.5'W 108°14.5'W 108°13.51'W 108°12.5'W 108°11.5'W

33°55.5'N 33°54.5'N 33°53.5'N 33°52.5'N 33°51.49'N 33°50.5'N 33°49.5'N 33°48.5'N 33°47.5'N 33°46.5'N 33°45.5'N 33°44.5'N 33°43.5'N 33°42.5'N 33°41.5'N 33°40.5'N 33°39.5'N 33°38.5'N 33°37.5'N 33°36.5'N 33°35.5'N 33°34.5'N 33°33.5'N 33°32.5'N 33°31.49'N 33°30.5'N 33°29.5'N 33°28.5'N 33°27.5'N 33°26.5'N 33°25.5'N 33°24.5'N 33°23.5'N 33°22.5'N 33°21.49'N 33°20.5'N 33°19.5'N 33°18.5'N 33°17.5'N 33°16.5'N 33°15.5'N 33°14.5'N 33°13.5'N 33°12.5'N 33°11.5'N 33°10.5'N 33°9.5'N 33°8.5'N 33°7.5'N 33°6.5'N 33°5.5'N 33°4.5'N 33°3.5'N 33°2.5'N 33°1.49'N 33°0.5'N 32°55.5'N

32°55.5'N 32°54.5'N 32°53.5'N 32°52.5'N 32°51.49'N 32°50.5'N 32°49.5'N 32°48.5'N 32°47.5'N 32°46.5'N 32°45.5'N 32°44.5'N 32°43.5'N 32°42.5'N 32°41.5'N 32°40.5'N 32°39.5'N 32°38.5'N 32°37.5'N 32°36.5'N 32°35.5'N 32°34.5'N 32°33.5'N 32°32.5'N 32°31.49'N 32°30.5'N 32°29.5'N 32°28.5'N 32°27.5'N 32°26.5'N 32°25.5'N 32°24.5'N 32°23.5'N 32°22.5'N 32°21.49'N 32°20.5'N 32°19.5'N 32°18.5'N 32°17.5'N 32°16.5'N 32°15.5'N 32°14.5'N 32°13.5'N 32°12.5'N 32°11.5'N 32°10.5'N 32°9.5'N 32°8.5'N 32°7.5'N 32°6.5'N 32°5.5'N 32°4.5'N 32°3.5'N 32°2.5'N 32°1.49'N 32°0.5'N

Operations
Turkey
NM-GNF-000419
08/14/2023 - 24hr
5220 acres at 8/13/2023 1300



	Helispot		Planned Road as Line		Road, Not Maintained for Passenger Car		Stream/River; Artificial Path
	Uncontained		Fire History		Other Roads		Stream/River Intermittent
	Division Break		Gap; Summit		Secondary Dirt		Freshwater Emergent and Freshwater Forested/Shrub Wetland
	Drop Point		GNIS Populated Place USGS		Fence Line		Scenic Byway
	Camp		Recreation Site		Proclaimed FS Boundary		Township
	Wildfire Daily Fire Perimeter		Completed Road as Line		Administrative FS Boundary		PB
	Other		Secondary Highway		FS Wilderness Boundary		SN
	Other		State Road (Dirt)		Spring/Seep		MSO PACs
	Other		Secondary Dirt				
	Other		Dirt (Not Paved)				

108°28'W 108°27'W 108°26'W 108°25'W 108°24'W 108°23'W 108°22'W 108°21.01'W 108°20'W 108°19'W 108°18'W 108°17'W 108°16'W 108°15'W 108°14'W 108°13'W 108°12'W 108°11'W