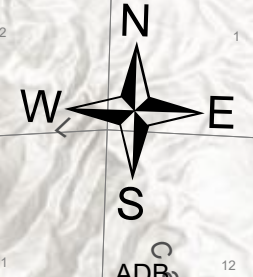
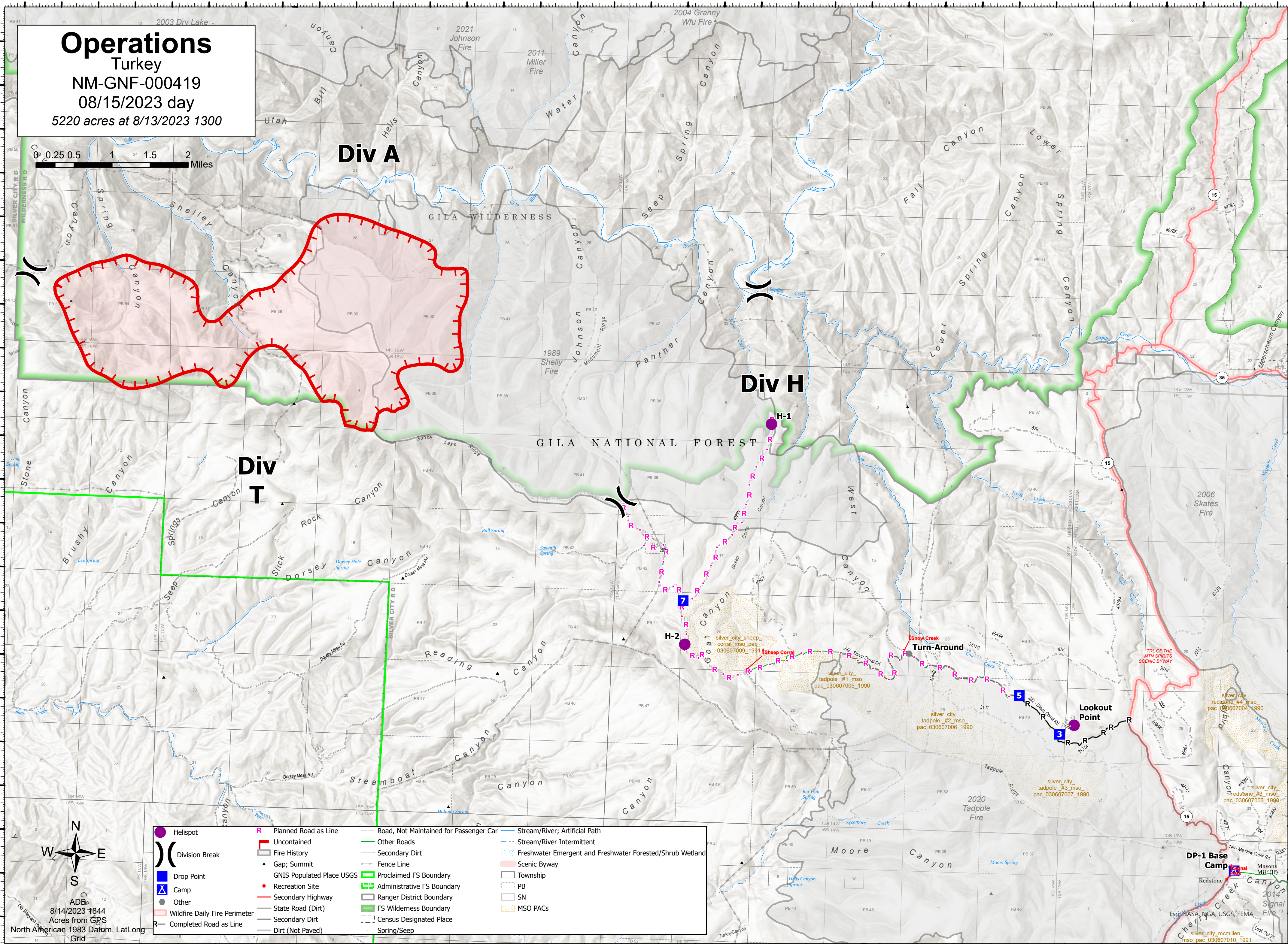
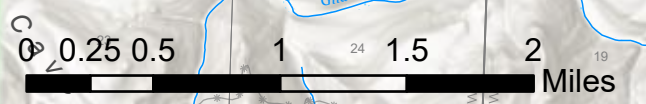


108°28.51'W 108°27.5'W 108°26.5'W 108°25.5'W 108°24.5'W 108°23.5'W 108°22.5'W 108°21.5'W 108°20.5'W 108°19.5'W 108°18.5'W 108°17.5'W 108°16.5'W 108°15.5'W 108°14.5'W 108°13.51'W 108°12.5'W 108°11.5'W

33°5'N 33°4.5'N 33°4'N 33°3.5'N 33°3'N 33°2.5'N 33°2'N 33°1.49'N 33°1'N 33°0.5'N 33°0'N 33°59'N 32°58.5'N 32°58'N 32°57.5'N 32°57'N 32°56.5'N 32°56'N

33°5'N 33°4.5'N 33°4'N 33°3.5'N 33°3'N 33°2.5'N 33°2'N 33°1.49'N 33°1'N 33°0.5'N 33°0'N 33°59'N 32°58.5'N 32°58'N 32°57.5'N 32°57'N 32°56.5'N 32°56'N

**Operations**  
Turkey  
NM-GNF-000419  
08/15/2023 day  
5220 acres at 8/13/2023 1300



	Helispot		Planned Road as Line		Road, Not Maintained for Passenger Car		Stream/River; Artificial Path
	Uncontained		Fire History		Other Roads		Stream/River Intermittent
	Division Break		Gap; Summit		Proclaimed FS Boundary		Freshwater Emergent and Freshwater Forested/Shrub Wetland
	Drop Point		GNIS Populated Place USGS		Administrative FS Boundary		Scenic Byway
	Camp		Recreation Site		Ranger District Boundary		Township
	Wildfire Daily Fire Perimeter		Completed Road as Line		FS Wilderness Boundary		PB
	Secondary Highway		Secondary Dirt		Spring/Seep		SN
	Other		Dirt (Not Paved)				MSO PACs

ADB  
8/14/2023 1844  
Acres from GPS  
North American 1983 Datum, Lat/Long  
Grid

108°28'W 108°27'W 108°26'W 108°25'W 108°24'W 108°23'W 108°22'W 108°21.01'W 108°20'W 108°19'W 108°18'W 108°17'W 108°16'W 108°15'W 108°14'W 108°13'W 108°12'W 108°11'W