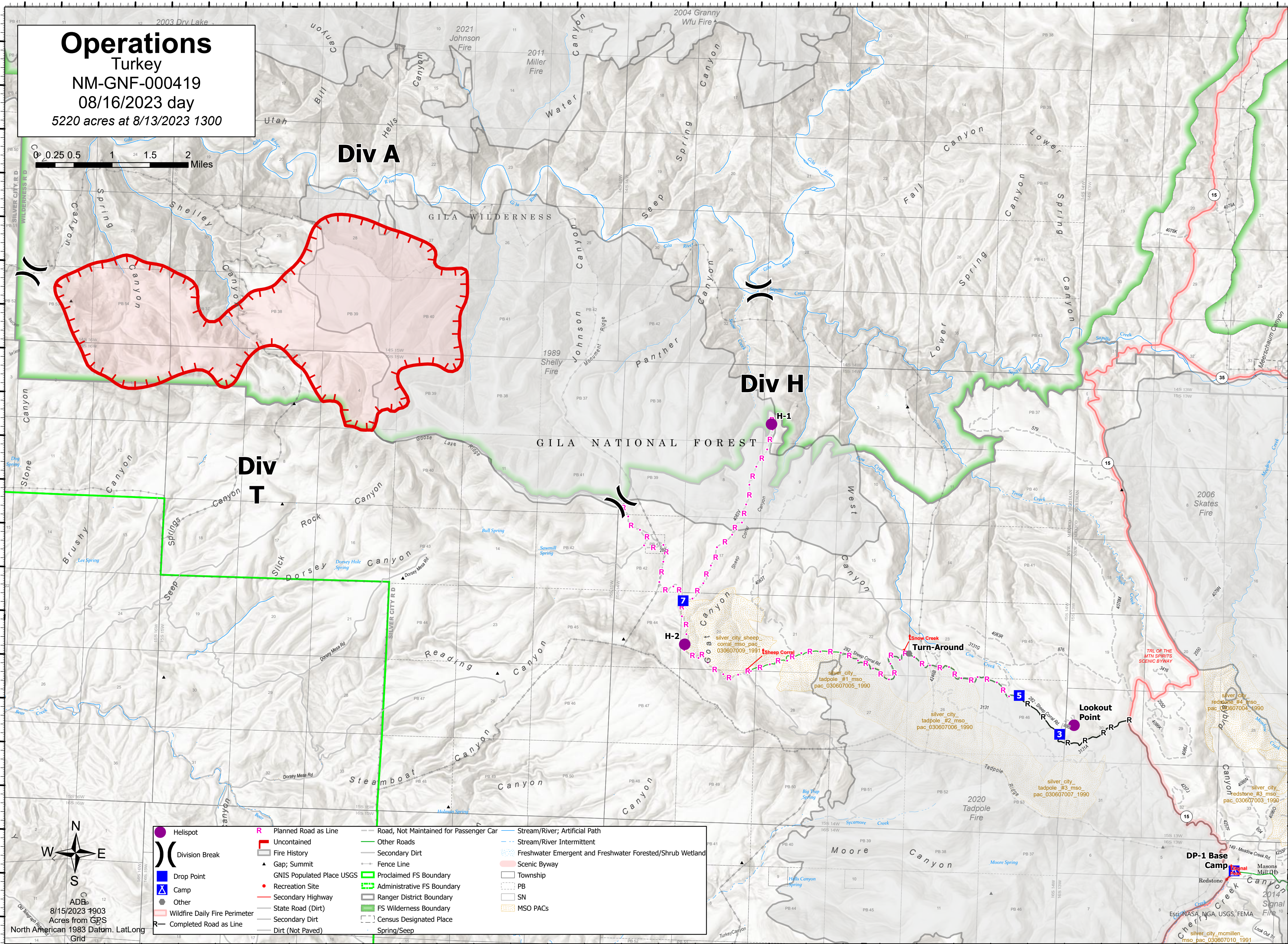
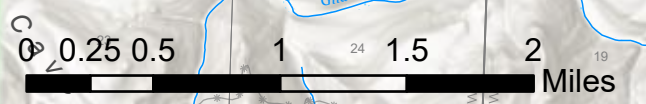


108°28.51'W 108°27.5'W 108°26.5'W 108°25.5'W 108°24.5'W 108°23.5'W 108°22.5'W 108°21.5'W 108°20.5'W 108°19.5'W 108°18.5'W 108°17.5'W 108°16.5'W 108°15.5'W 108°14.5'W 108°13.51'W 108°12.5'W 108°11.5'W

33°5'N 33°4.5'N 33°4'N 33°3.5'N 33°3'N 33°2.5'N 33°2'N 33°1.49'N 33°1'N 33°0.5'N 33°0'N 33°59'N 32°58.5'N 32°58'N 32°57.5'N 32°57'N 32°56.5'N 32°56'N

33°5'N 33°4.5'N 33°4'N 33°3.5'N 33°3'N 33°2.5'N 33°2'N 33°1.49'N 33°1'N 33°0.5'N 33°0'N 33°59'N 32°58.5'N 32°58'N 32°57.5'N 32°57'N 32°56.5'N 32°56'N

Operations
Turkey
NM-GNF-000419
08/16/2023 day
5220 acres at 8/13/2023 1300



8/15/2023 1903
Acres from GPS
North American 1983 Datum, Lat/Long
Grid

	Helispot		Planned Road as Line		Road, Not Maintained for Passenger Car		Stream/River; Artificial Path
	Uncontained		Fire History		Other Roads		Stream/River Intermittent
	Division Break		Gap; Summit		Proclaimed FS Boundary		Freshwater Emergent and Freshwater Forested/Shrub Wetland
	Drop Point		GNIS Populated Place USGS		Administrative FS Boundary		Scenic Byway
	Camp		Recreation Site		Ranger District Boundary		Township
	Wildfire Daily Fire Perimeter		Completed Road as Line		FS Wilderness Boundary		PB
	Completed Road as Line		Secondary Dirt		Spring/Seep		SN
	Completed Road as Line		Secondary Dirt		Spring/Seep		MSO PACs
	Completed Road as Line		Secondary Dirt		Spring/Seep		MSO PACs

108°28'W 108°27'W 108°26'W 108°25'W 108°24'W 108°23'W 108°22'W 108°21.01'W 108°20'W 108°19'W 108°18'W 108°17'W 108°16'W 108°15'W 108°14'W 108°13'W 108°12'W 108°11'W