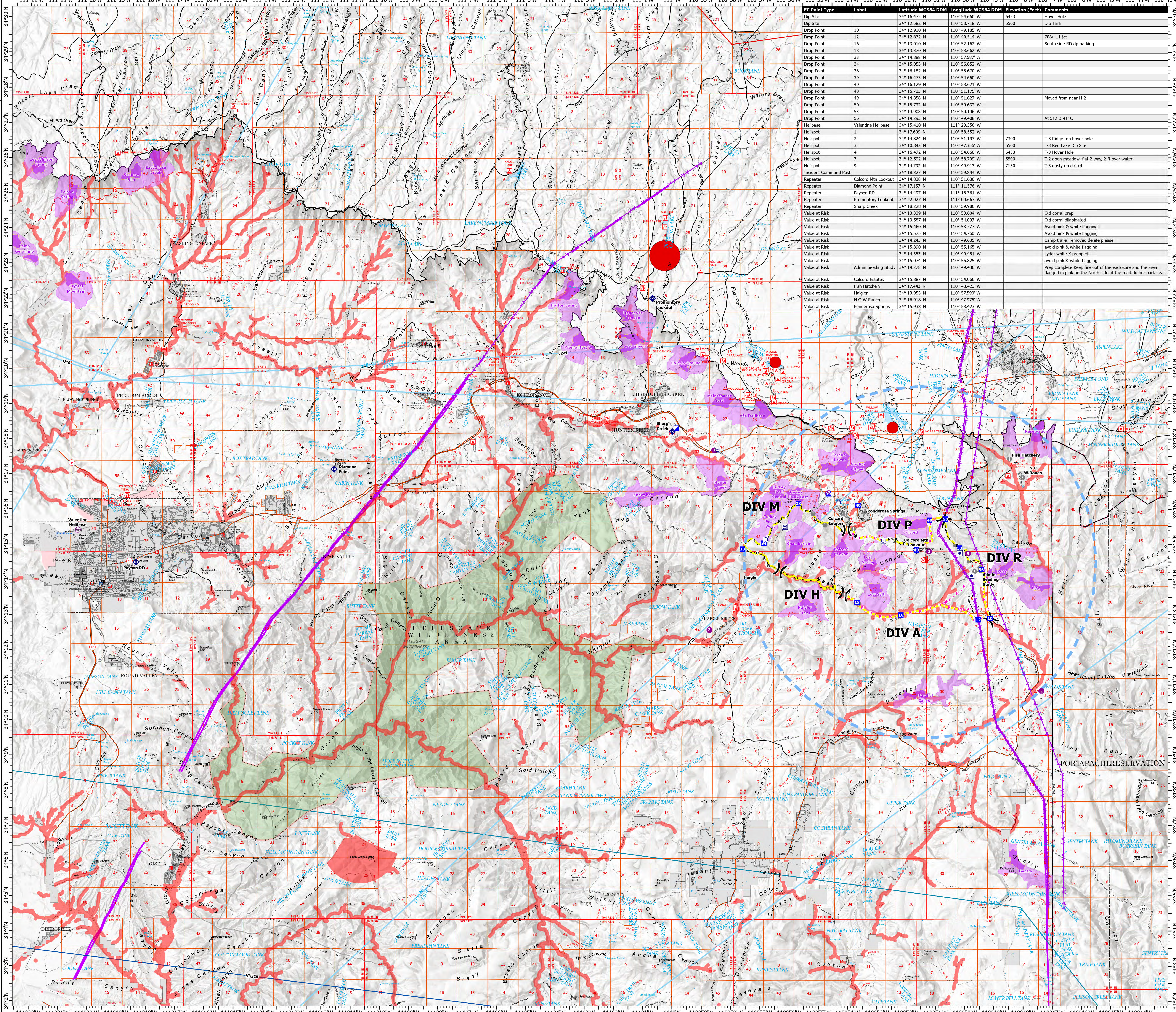


AIR OPERATIONS

Valentine Fire
AZTNF-001315
8/27/2023
14 acres at 8/23/2023

- Other Property
- Water Tank
- Dip Site
- Helispot
- Helibase
- Division Break
- Incident Command Post
- Drop Point
- Fire Origin
- Value at Risk
- Other
- Repeater
- Completed Dozer Line
- Completed Hand Line
- Completed Mixed Construction Line
- Completed Road as Line
- Planned Dozer Line
- Planned Hand Line
- Planned Road as Line
- Access or Improved Road
- Fence
- Highlighted Feature
- Other
- Aerial Hazard
- Temporary Flight Restriction
- Uncontaminated
- Wildfire Daily Fire Perimeter
- Valentine Proposed Perimeter
- Rim Lakes Aerial Avoidance 2023
- Mexican Spotted Owl - Core 2023
- Mexican Spotted Owl - Protected Activity Center 2023
- Aerial Fire Retardant Avoidance Area
- Wilderness
- Ranger District Office
- CAMPGROUND
- PICNIC SITE
- TRAILHEAD
- HORSE CAMP
- INTERPRETIVE VISITOR CENTER
- Forest Service
- Cemetery
- City / Town Hall
- School (K - 12)
- College / University
- Post Office
- Fire Station / EMS Station
- Hospital / Medical Center
- Law Enforcement
- Court House; State Capitol; US Capitol
- Secondary Highway
- Road, Unspecified
- National Historic Scenic Trail GTC
- Trails Plus GTC
- National Trail USGS
- Runways
- USFS Proclaimed Forest Grassland
- USFS Administrative Forest
- USFS Ranger District
- USFS Wilderness
- State Conservation Area
- Nonearthen Shore
- Dam / Weir
- Wash
- Lake / Pond
- Lake / Pond (Intermittent)
- Reservoir
- PLSS Township BLM
- BLMPLSSSections
- Non Forest
- BIA RESERVATIONS-Indian Land
- Urban Area
- Civil Airport w/o Facilities
- Air Traffic Service Route
- Visual Route
- Visual Route Outer Boundary
- Instrument Route Outer Boundary
- Main Power Line



FC Point Type	Label	Latitude WGS84 DDM	Longitude WGS84 DDM	Elevation (Feet)	Comments
Dip Site		34° 16.472' N	110° 54.660' W	6453	Hover Hole
Dip Site		34° 12.910' N	110° 58.718' W	3500	Dip Tank
Drop Point	10	34° 12.910' N	110° 49.105' W		
Drop Point	12	34° 12.872' N	110° 49.514' W		788/411 jct
Drop Point	16	34° 13.010' N	110° 52.162' W		South side rd parking
Drop Point	18	34° 13.370' N	110° 53.662' W		
Drop Point	33	34° 14.888' N	110° 57.587' W		
Drop Point	34	34° 15.053' N	110° 56.852' W		
Drop Point	38	34° 15.883' N	110° 55.670' W		
Drop Point	39	34° 16.472' N	110° 54.660' W		
Drop Point	40	34° 16.129' N	110° 53.621' W		
Drop Point	48	34° 15.703' N	110° 51.175' W		
Drop Point	49	34° 14.858' N	110° 51.627' W		Moved from near H-2
Drop Point	50	34° 15.732' N	110° 50.632' W		
Drop Point	53	34° 14.908' N	110° 50.146' W		
Drop Point	56	34° 14.293' N	110° 49.408' W		At 512 & 411C
Helibase	Valentine Helibase	34° 15.410' N	110° 51.630' W		
Helispot	2	34° 17.699' N	110° 58.552' W		
Helispot	3	34° 14.824' N	110° 51.193' W	7300	T-3 Ridge top hover hole
Helispot	4	34° 10.842' N	110° 47.356' W	6500	T-3 Red Lake Dip Site
Helispot	7	34° 16.472' N	110° 54.660' W	6453	T-3 Hover Hole
Helispot	9	34° 12.592' N	110° 58.709' W	5500	T-2 open meadow, flat 2-way, 2 ft over water
Helispot	17	34° 14.792' N	110° 49.913' W	7130	T-3 dusty on dirt rd
Incident Command Post		34° 18.327' N	110° 59.844' W		
Repeater	Colcord Mtn Lookout	34° 15.410' N	110° 51.630' W		
Repeater	Diamond Point	34° 17.157' N	111° 11.576' W		
Repeater	Payson Rd	34° 14.497' N	111° 18.361' W		
Repeater	Promontory Lookout	34° 22.027' N	110° 00.667' W		
Repeater	Sharp Creek	34° 18.228' N	110° 59.986' W		
Value at Risk		34° 13.339' N	110° 53.604' W		Old corral prep
Value at Risk		34° 13.587' N	110° 54.097' W		Old corral dilapidated
Value at Risk		34° 15.460' N	110° 53.773' W		Avoid pink & white flagging
Value at Risk		34° 15.575' N	110° 54.760' W		Avoid pink & white flagging
Value at Risk		34° 14.243' N	110° 49.635' W		Camp trailer removed delete phase
Value at Risk		34° 15.890' N	110° 55.165' W		avoid pink & white flagging
Value at Risk		34° 14.353' N	110° 49.451' W		Lydar white X prepmed
Value at Risk		34° 15.074' N	110° 56.825' W		avoid pink & white flagging
Value at Risk		34° 14.278' N	110° 49.430' W		Prep complete Keep fire out of the enclosure and the area flagged in pink on the North side of the road.do not park near.
Value at Risk	Admin Seeding Study	34° 14.278' N	110° 49.430' W		
Value at Risk	Colcord Estates	34° 15.887' N	110° 54.066' W		
Value at Risk	Fish Hatchery	34° 17.443' N	110° 48.423' W		
Value at Risk	Halger	34° 13.953' N	110° 57.590' W		
Value at Risk	N O W Ranch	34° 16.918' N	110° 47.976' W		
Value at Risk	Pondosa Springs	34° 15.938' N	110° 53.423' W		

