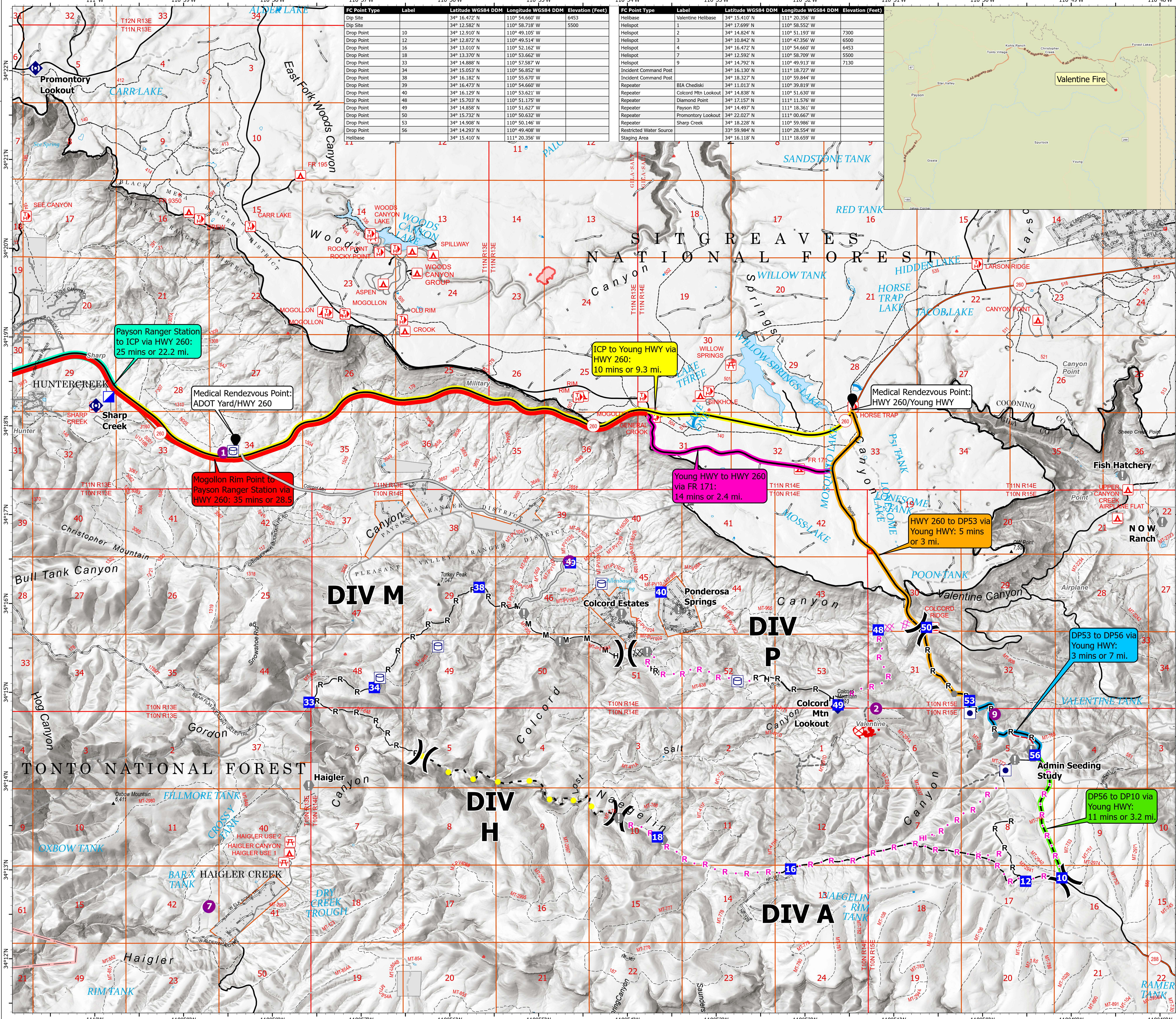
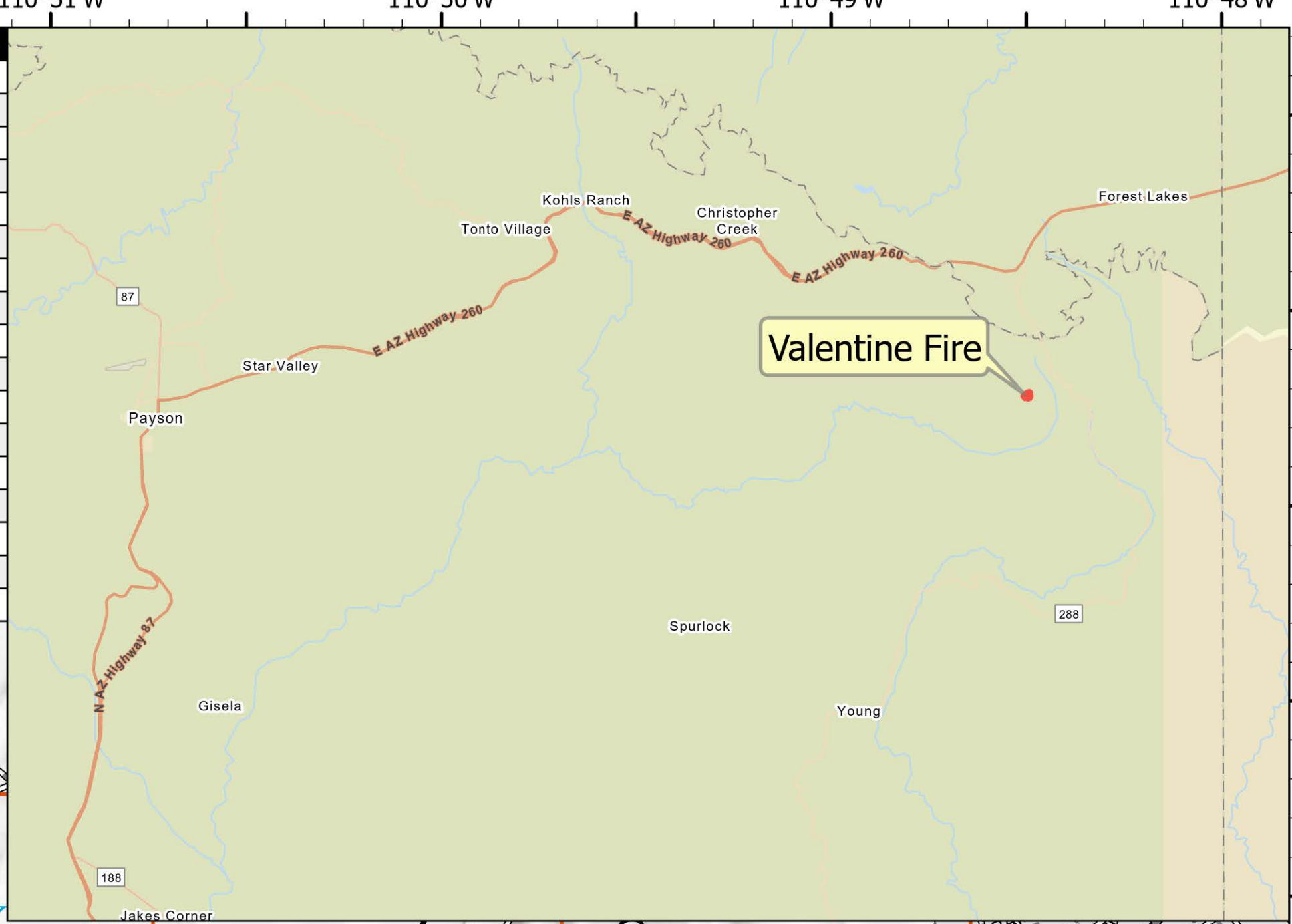


**MEDICAL TRANSPORT**  
**GROUND**  
 Valentine Fire  
 AZTNF-001315  
 8/27/2023  
 14 acres at 8/23/2023

- Other Property
- Water Tank
- Dip Site
- Helispot
- Division Break
- Incident
- Command Post
- Drop Point
- Fire Origin
- Value at Risk
- Other
- Repeater
- Completed Dozer Line
- Completed Hand Line
- Completed Mixed Construction Line
- Completed Road as Line
- Planned Dozer Line
- Planned Hand Line
- Planned Road as Line
- Access or Improved Road
- Fence
- Highlighted Feature
- Other
- Uncontained Wildfire Daily Fire
- Perimeter
- Paved Road
- Dirt (Not Paved) Road, Not Maintained for Passenger Car
- <all other values>

FC Point Type	Label	Latitude WGS84 DDM	Longitude WGS84 DDM	Elevation (Feet)
Dip Site		34° 16.472' N	110° 54.660' W	6453
Dip Site		34° 12.582' N	110° 58.718' W	5500
Drop Point	10	34° 12.910' N	110° 49.105' W	
Drop Point	12	34° 12.872' N	110° 49.514' W	
Drop Point	16	34° 13.010' N	110° 52.162' W	
Drop Point	18	34° 13.370' N	110° 53.662' W	
Drop Point	33	34° 14.888' N	110° 57.587' W	
Drop Point	34	34° 15.053' N	110° 56.852' W	
Drop Point	38	34° 16.182' N	110° 55.670' W	
Drop Point	39	34° 16.473' N	110° 54.660' W	
Drop Point	40	34° 16.129' N	110° 53.621' W	
Drop Point	48	34° 15.703' N	110° 51.175' W	
Drop Point	49	34° 14.858' N	110° 51.627' W	
Drop Point	50	34° 15.732' N	110° 50.632' W	
Drop Point	53	34° 14.908' N	110° 50.146' W	
Drop Point	56	34° 14.293' N	110° 49.408' W	
Helibase		34° 15.410' N	111° 20.356' W	

FC Point Type	Label	Latitude WGS84 DDM	Longitude WGS84 DDM	Elevation (Feet)
Helibase	Valentine Helibase	34° 15.410' N	111° 20.356' W	
Helispot	1	34° 17.699' N	110° 58.552' W	7300
Helispot	2	34° 14.824' N	110° 51.193' W	6500
Helispot	3	34° 10.842' N	110° 47.356' W	6453
Helispot	4	34° 16.472' N	110° 54.660' W	5500
Helispot	7	34° 12.592' N	110° 58.709' W	5500
Helispot	9	34° 14.792' N	110° 49.813' W	7130
Incident Command Post		34° 16.130' N	111° 18.727' W	
Incident Command Post		34° 18.327' N	110° 59.844' W	
Repeater	BIA Chediski	34° 11.013' N	110° 59.819' W	
Repeater	Colcord Mtn Lookout	34° 14.838' N	110° 51.630' W	
Repeater	Diamond Point	34° 17.157' N	111° 11.576' W	
Repeater	Payson RD	34° 14.497' N	111° 18.361' W	
Repeater	Promontory Lookout	34° 22.027' N	111° 00.667' W	
Repeater	Sharp Creek	34° 18.228' N	110° 59.986' W	
Restricted Water Source		33° 59.984' N	110° 28.554' W	
Staging Area		34° 16.118' N	111° 18.659' W	



Payson Ranger Station to ICP via HWY 260: 25 mins or 22.2 mi.

ICP to Young HWY via HWY 260: 10 mins or 9.3 mi.

Medical Rendezvous Point: ADOT Yard/HWY 260

Medical Rendezvous Point: HWY 260/Young HWY

Mogollon Rim Point to Payson Ranger Station via HWY 260: 35 mins or 28.5

Young HWY to HWY 260 via FR 171: 14 mins or 2.4 mi.

HWY 260 to DP53 via Young HWY: 5 mins or 3 mi.

DP53 to DP56 via Young HWY: 3 mins or 7 mi.

DP56 to DP10 via Young HWY: 11 mins or 3.2 mi.

