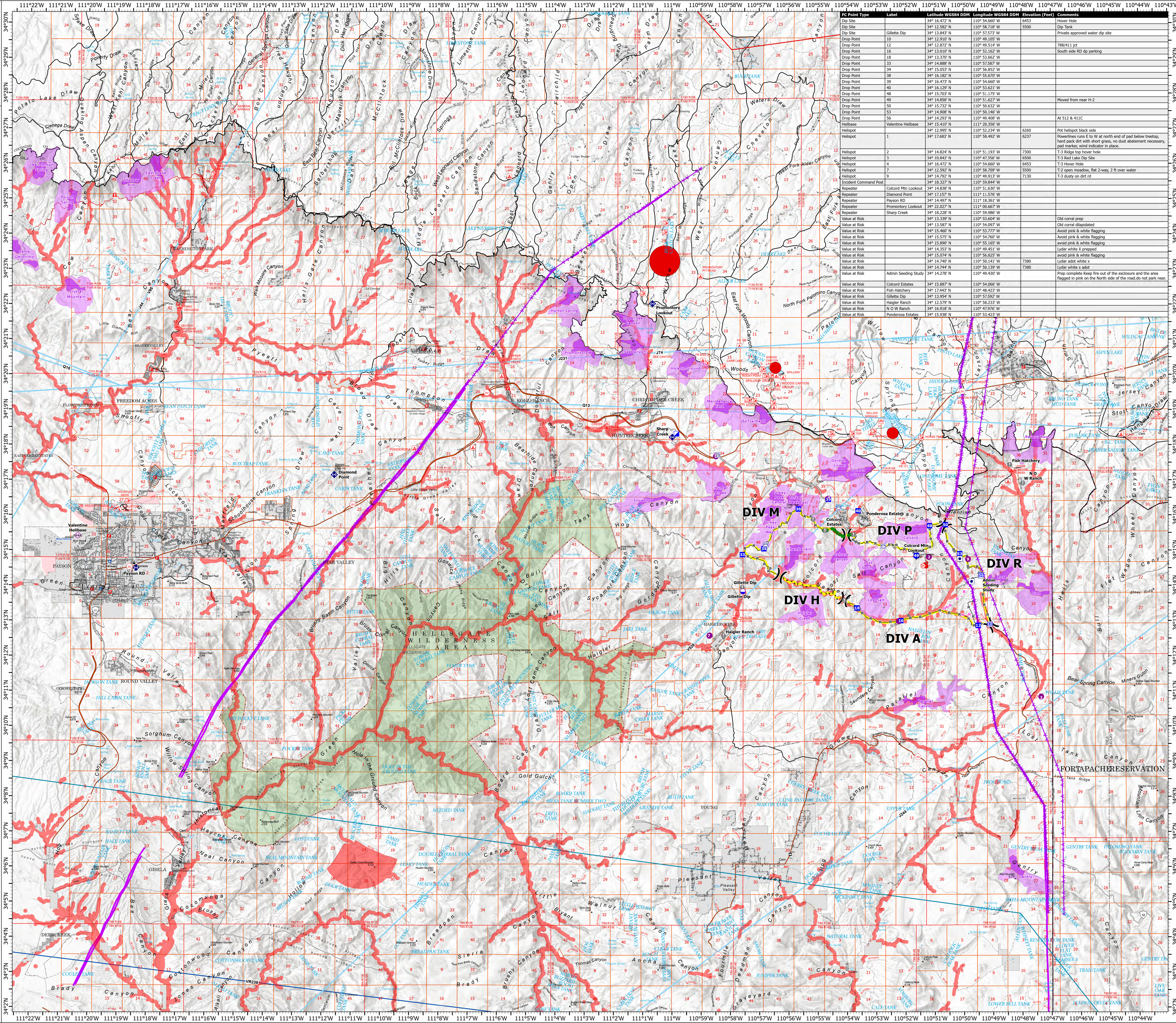


AIR OPERATIONS

Valentine Fire
AZTNF-001315
8/30/2023
16 acres at 8/29/2023

- Other Property
- Water Tank
- Dip Site
- Helispot
- Helibase
- Division Break
- Incident Command Post
- Drop Point
- Fire Origin
- Value at Risk
- Other
- Repair Point
- Repair
- Completed Dozer Line
- Completed Hand Line
- Completed Mixed Construction Line
- Completed Road as Line
- Planned Hand Line
- Planned Road as Line
- Access or Improved Road
- Highlighted Feature
- Other
- Repair Line
- Aerial Hazard
- Uncontained
- Wildfire Daily Fire Perimeter
- Valentine Proposed Perimeter
- Rim Lakes Aerial Avoidance 2023
- Mexican Spotted Owl - Core 2023
- Mexican Spotted Owl - Protected Activity Center 2023
- Aerial Fire Retardant Avoidance Area
- Wilderness
- Ranger District Office
- CAMPGROUND
- PICNIC SITE
- TRAILHEAD
- HORSE CAMP
- INTERPRETIVE VISITOR CENTER
- Forest Service
- Cemetery
- City / Town Hall
- School (K - 12)
- College / University
- Post Office
- Fire Station / EMS Station
- Hospital / Medical Center
- Law Enforcement
- Court House; State Capitol; US Capitol
- Secondary Highway
- Road, Unspecified
- National Historic Scenic Trail GTCAC
- Trails Plus GTCAC
- National Trail USGS
- Runways
- USFS Proclaimed Forest Grassland
- USFS Administrative Forest
- USFS Ranger District
- USFS Wilderness
- State Wilderness Area
- Nonearthen Shore
- Dam / Weir
- Wash
- Lake / Pond
- Lake / Pond (Intermittent)
- Reservoir
- PLSS Township BLM
- BLMPLSSSections
- Non Forest
- BIA RESERVATIONS-Indian Land
- Urban Area
- Civil Airport w/o Facilities
- Air Traffic Service Route
- Visual Route
- Visual Route Outer Boundary
- Instrument Route Outer Boundary
- Main Power Line



IC Point Type	Label	Latitude WGS84 DDM	Longitude WGS84 DDM	Elevation (Feet)	Comments
Dip Site	10	34° 12.582' N	110° 58.718' W	5500	Dip Tank
Dip Site	11	34° 13.843' N	110° 57.573' W		Private approved water dip site
Drop Point	12	34° 12.910' N	110° 49.105' W		
Drop Point	13	34° 12.872' N	110° 49.514' W	1443	Flower Hole
Drop Point	14	34° 13.010' N	110° 52.342' W		South side RD dp parking
Drop Point	18	34° 13.370' N	110° 53.662' W		
Drop Point	33	34° 14.888' N	110° 57.587' W		
Drop Point	34	34° 15.053' N	110° 56.652' W		
Drop Point	38	34° 15.292' N	110° 55.270' W		
Drop Point	39	34° 16.473' N	110° 54.660' W		
Drop Point	40	34° 16.129' N	110° 53.621' W		
Drop Point	48	34° 15.703' N	110° 51.175' W		
Drop Point	49	34° 14.858' N	110° 51.627' W		Moved from near H-2
Drop Point	50	34° 14.292' N	110° 50.832' W		
Drop Point	53	34° 14.908' N	110° 50.146' W		
Drop Point	56	34° 14.293' N	110° 49.408' W		At 512 & 411C
Helibase	Valentine Helibase	34° 15.410' N	110° 20.356' W	6360	Flat helispot back side
Helispot	1	34° 17.683' N	110° 58.492' W	6237	Powerlines runs E to W at north end of pad below treeline, pad marker, wind indicator in place.
Helispot	2	34° 14.824' N	110° 51.193' W	7300	T-3 Ridge top tower hole
Helispot	3	34° 10.842' N	110° 47.356' W	6500	T-3 Red Lake Dip Site
Helispot	4	34° 16.472' N	110° 54.660' W	6453	T-3 Hover Hole
Helispot	7	34° 12.582' N	110° 58.718' W	5500	T-2 open meadow, flat 2-way, 2 ft over water
Helispot	29	34° 14.292' N	110° 50.832' W	7130	T-3 dusty on dirt rd
Incident Command Post		34° 18.327' N	110° 59.844' W		
Repeater	Colcord Mtn Lookout	34° 14.838' N	110° 51.630' W		
Repeater	Diamond Point	34° 12.587' N	110° 51.576' W		
Repeater	Payson RD	34° 14.807' N	110° 48.861' W		
Repeater	Promontory Lookout	34° 22.027' N	110° 00.667' W		
Repeater	Sharp Creek	34° 18.228' N	110° 59.986' W		
Value at Risk		34° 13.339' N	110° 53.604' W		Old coral prep
Value at Risk		34° 13.567' N	110° 54.977' W		Old coral disappiated
Value at Risk		34° 15.967' N	110° 53.777' W		Avoid pink & white flagging
Value at Risk		34° 15.575' N	110° 54.760' W		Avoid pink & white flagging
Value at Risk		34° 15.890' N	110° 55.165' W		avoid pink & white flagging
Value at Risk		34° 14.353' N	110° 49.451' W		Lydar white X prepred
Value at Risk		34° 15.024' N	110° 50.525' W		avoid pink & white flagging
Value at Risk		34° 14.740' N	110° 50.141' W		Lydar asst white x
Value at Risk		34° 14.744' N	110° 50.139' W	7380	Lydar white x adot
Value at Risk	Admin Seeding Study	34° 14.278' N	110° 49.430' W		Prep complete Keep fire out of the enclosure and the area flagged in pink on the North side of the road do not park near.
Value at Risk	Colcord Estates	34° 15.887' N	110° 54.066' W		
Value at Risk	Fish Hatchery	34° 17.443' N	110° 48.423' W		
Value at Risk	Gillette Dip	34° 13.954' N	110° 57.592' W		
Value at Risk	Hagler Ranch	34° 12.579' N	110° 58.233' W		
Value at Risk	N O W Ranch	34° 16.818' N	110° 47.206' W		
Value at Risk	Ponderosa Estates	34° 15.938' N	110° 53.423' W		

