

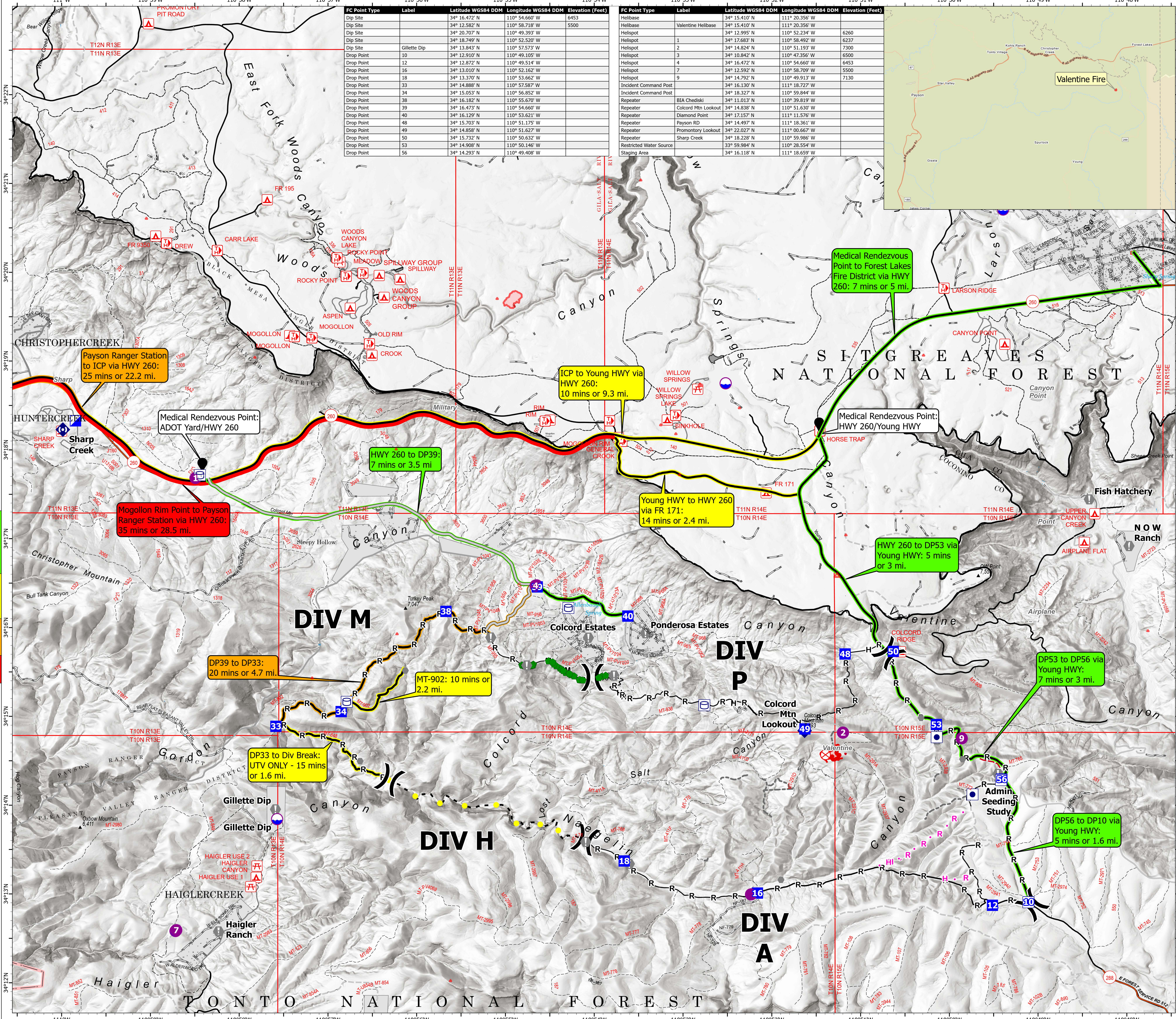
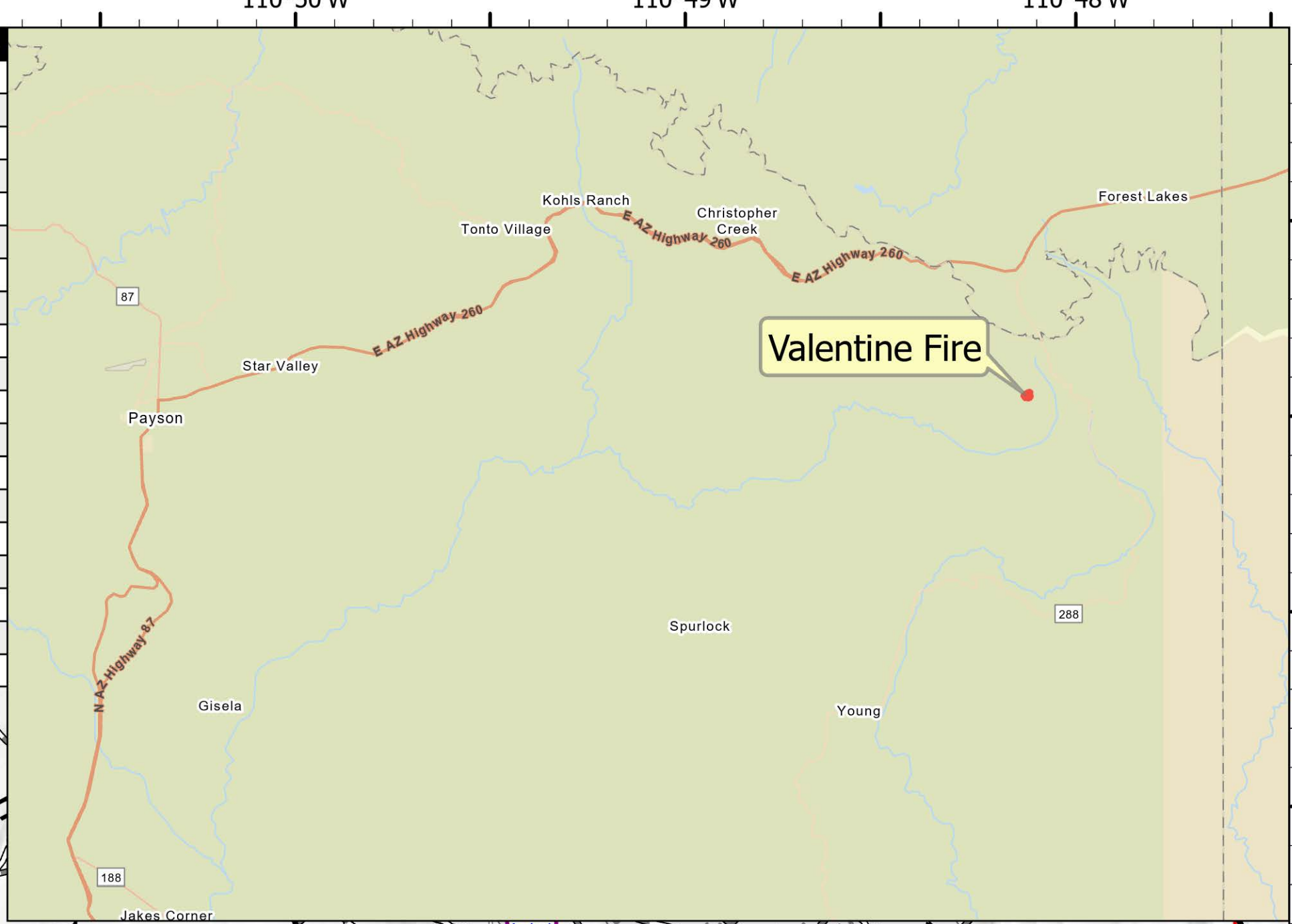
MEDICAL TRANSPORT
GROUND
 Valentine Fire
 AZTNF-001315
 8/30/2023
 16 acres at 8/29/2023

- Drivetime
- 5-10 minutes
- 10-15 minutes
- 20-25 minutes
- 35+ minutes
- Other Property
- Water Tank
- Dip Site
- Helispot
- Division Break
- Incident
- Command Post
- Drop Point
- Fire Origin
- Value at Risk
- Other
- Repair Point
- Repeater
- Completed Dozer Line
- Completed Hand Line
- Completed Mixed Construction Line
- Completed Road
- Planned Road as Line
- Planned Hand Line
- Planned Road as Line
- Access or Improved Road
- Fence
- Highlighted Feature
- Other
- Repair Line
- Uncontained Wildfire Daily Fire
- Perimeter

- 5-10 minutes
 - HWY 260 to DP53 via Young HWY: 5 mins or 3 mi.
 - DP56 to DP10 via Young HWY: 5 mins or 1.6 mi.
 - DP53 to DP56 via Young HWY: 7 mins or 3 mi.
 - HWY 260 to DP: 7 mins or 3.5 mi.
 - Medical Rendezvous Point to Forest Lakes Fire District via HWY 260: 7 mins or 5 mi.
- 10-15 minutes
 - ICP to Young HWY via HWY 260: 10 mins or 9.3 mi.
 - MT-902: 10 mins or 2.2 mi.
 - Young HWY to HWY 260 via FR 171: 14 mins or 2.4 mi.
 - DP33 to Div Break: UTV ONLY - 15 mins or 1.6 mi.
- 20-25 minutes
 - DP39 to DP33: 20 mins or 4.7 mi.
 - Payson Ranger Station to ICP via HWY 260: 25 mins or 22.2 mi.
- 35+ minutes
 - Mogollon Rim Point to Payson Ranger Station via HWY 260: 35 mins or 28.5 mi.

FC Point Type	Label	Latitude WGS84 DDM	Longitude WGS84 DDM	Elevation (Feet)
Dip Site		34° 16.472' N	110° 54.660' W	6453
Dip Site		34° 12.582' N	110° 58.718' W	5500
Dip Site		34° 20.707' N	110° 49.393' W	
Dip Site		34° 18.749' N	110° 52.520' W	
Dip Site	Gillette Dip	34° 13.843' N	110° 52.573' W	
Drop Point	10	34° 12.910' N	110° 49.105' W	
Drop Point	12	34° 12.877' N	110° 49.514' W	
Drop Point	16	34° 13.010' N	110° 52.162' W	
Drop Point	18	34° 13.370' N	110° 53.662' W	
Drop Point	33	34° 14.888' N	110° 57.587' W	
Drop Point	34	34° 15.053' N	110° 56.852' W	
Drop Point	38	34° 16.182' N	110° 55.670' W	
Drop Point	39	34° 16.473' N	110° 54.660' W	
Drop Point	40	34° 16.129' N	110° 53.621' W	
Drop Point	48	34° 15.703' N	110° 51.175' W	
Drop Point	49	34° 14.858' N	110° 51.627' W	
Drop Point	50	34° 15.732' N	110° 50.632' W	
Drop Point	53	34° 14.908' N	110° 50.146' W	
Drop Point	56	34° 14.293' N	110° 49.408' W	

FC Point Type	Label	Latitude WGS84 DDM	Longitude WGS84 DDM	Elevation (Feet)
Helibase		34° 15.410' N	111° 20.356' W	
Helibase	Valentine Helibase	34° 15.410' N	111° 20.356' W	
Helispot		34° 12.995' N	110° 52.234' W	6260
Helispot	1	34° 12.683' N	110° 58.492' W	6237
Helispot	2	34° 14.824' N	110° 51.193' W	7300
Helispot	3	34° 10.842' N	110° 47.356' W	6500
Helispot	4	34° 16.472' N	110° 54.660' W	6453
Helispot	7	34° 12.592' N	110° 58.709' W	5500
Helispot	9	34° 14.792' N	110° 49.913' W	7130
Incident Command Post		34° 16.130' N	111° 18.722' W	
Incident Command Post		34° 18.327' N	110° 59.844' W	
Repeater	BIA Chediski	34° 11.013' N	110° 39.819' W	
Repeater	Colcord Mtn Lookout	34° 14.838' N	110° 51.630' W	
Repeater	Diamond Point	34° 17.157' N	111° 11.576' W	
Repeater	Payson RD	34° 14.497' N	111° 18.361' W	
Repeater	Promontory Lookout	34° 22.027' N	111° 00.667' W	
Repeater	Sharp Creek	34° 18.228' N	110° 59.986' W	
Restricted Water Source		33° 59.984' N	110° 28.554' W	
Staging Area		34° 16.118' N	111° 18.659' W	



Miles
0 1 2

Kilometers
0 1 2