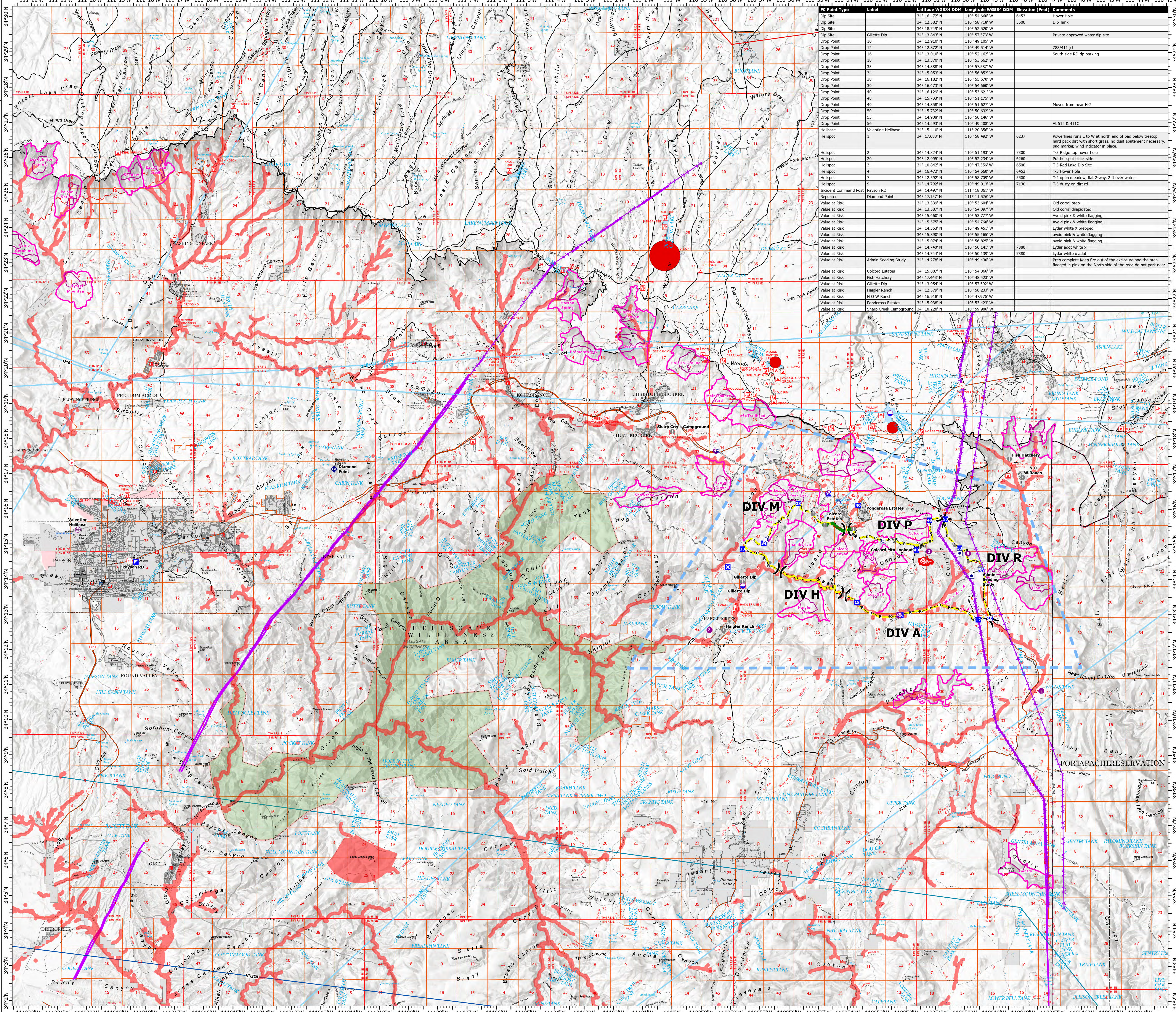


AIR OPERATIONS

Valentine Fire
AZ-TNF-1315
9/5/2023
50 acres at 9/4/2023 @ 1235

- Other Property
- Water Tank
- Dip Site
- Helispot
- Helibase
- Division Break
- Incident Command Post
- Drop Point
- Closure
- Lookout
- Fire Origin
- Value at Risk
- Other
- Repair Point
- Repeater
- Completed Dozer Line
- Completed Hand Line
- Completed Mixed Construction Line
- Completed Road as Line
- Planned Hand Line
- Planned Road as Line
- Access or Improved Road
- Fence
- Highlighted Feature
- Other
- Repair Line
- Aerial Hazard
- Temporary Flight Restriction
- Uncountained
- Wildfire Daily Fire Perimeter
- Valentine Proposed Perimeter
- Rim Lakes Aerial Avoidance 2023
- Mexican Spotted Owl - Core 2023
- Mexican Spotted Owl - Protected Activity Center 2023
- Aerial Fire Retardant Avoidance Area
- Wilderness
- CAMPGROUND
- PICNIC SITE
- TRAILHEAD
- HORSE CAMP
- INTERPRETIVE VISITOR CENTER
- Forest Service
- Cemetery
- City / Town Hall
- School (K - 12)
- College / University
- Post Office
- Fire Station / EMS Station
- Hospital / Medical Center
- Law Enforcement
- Court House; State Capitol; US Capitol
- Secondary Highway
- Road, Unspecified
- National Historic Scenic Trail GATC
- Trails Plus GATC
- National Trail USGS
- Runways
- USFS Proclaimed Forest Grassland
- USFS Administrative Forest
- USFS Ranger District
- USFS Wilderness
- State Conservation Area
- Nonearthed Shore
- Dam / Weir
- Wash
- Lake / Pond
- Lake / Pond (Intermittent)
- Reservoir
- PLSS Township BLM
- BLMPLSSSections
- Non Forest
- BIA RESERVATIONS-Indian Land
- Urban Area
- Civil Airport w/o Facilities
- Air Traffic Service Route
- Visual Route
- Visual Route Outer Boundary
- Instrument Route Outer Boundary
- Main Power Line



FC Point Type	Label	Latitude WGS84 DDM	Longitude WGS84 DDM	Elevation (Feet)	Comments
Dip Site	12	34° 18.749' N	110° 52.520' W	5500	Water hole
Dip Site	10	34° 18.843' N	110° 57.573' W		Private approved water dip site
Drop Point	10	34° 12.910' N	110° 49.105' W		
Drop Point	12	34° 12.872' N	110° 49.514' W		788/411 jet
Drop Point	16	34° 13.010' N	110° 52.162' W		South side RD dip parking
Drop Point	18	34° 13.370' N	110° 53.662' W		
Drop Point	33	34° 14.888' N	110° 57.887' W		
Drop Point	34	34° 15.053' N	110° 56.852' W		
Drop Point	38	34° 16.182' N	110° 55.670' W		
Drop Point	39	34° 16.472' N	110° 54.669' W		
Drop Point	40	34° 16.129' N	110° 53.621' W		
Drop Point	48	34° 15.703' N	110° 51.175' W		
Drop Point	49	34° 15.858' N	110° 51.627' W		Moved from near H-2
Drop Point	50	34° 15.732' N	110° 50.632' W		
Drop Point	53	34° 14.908' N	110° 50.146' W		
Drop Point	56	34° 14.293' N	110° 49.408' W		
Helibase	Valentine Helibase	34° 15.410' N	111° 20.356' W		
Helispot	1	34° 17.683' N	110° 58.492' W	6237	Powerlines runs E to W at north end of pad below treetop, hand pack dirt with short grass, no dust abatement necessary, pad marks wind indicator in place.
Helispot	2	34° 14.824' N	110° 51.193' W	7300	T-3 Ridge top hover hole
Helispot	20	34° 12.995' N	110° 52.234' W	6260	Put helispot black slide
Helispot	3	34° 10.842' N	110° 47.356' W	6500	T-3 Red Lake Dip Site
Helispot	4	34° 16.472' N	110° 54.669' W	6453	T-3 Hover hole
Helispot	7	34° 12.552' N	110° 58.709' W	5500	T-2 open meadow, flat 2-way, 2 ft over water
Helispot	9	34° 14.792' N	110° 49.913' W	7130	T-3 dusty on dirt rd
Incident Command Post	Payson RD	34° 14.497' N	111° 18.361' W		
Repeater	Diamond Point	34° 17.157' N	111° 11.576' W		Old coral pierp
Value at Risk	13	34° 13.329' N	110° 53.604' W		Old coral dislabeled
Value at Risk	34	34° 13.587' N	110° 54.097' W		Avoid pink & white flagging
Value at Risk	34	15.460' N	110° 53.777' W		Avoid pink & white flagging
Value at Risk	34	15.575' N	110° 54.760' W		Avoid pink & white flagging
Value at Risk	34	14.353' N	110° 49.451' W		Avoid pink & white flagging
Value at Risk	34	15.890' N	110° 55.165' W		Avoid pink & white flagging
Value at Risk	34	15.924' N	110° 56.823' W		Avoid pink & white flagging
Value at Risk	34	14.740' N	110° 50.141' W	7380	Lydar avoid white x
Value at Risk	34	14.744' N	110° 50.139' W	7380	Lydar white x adot
Value at Risk	Admin Seeding Study	34° 14.278' N	110° 49.430' W		Prep complete. Keep fire out of the enclosure and the area flagged in pink on the North side of the road. do not park near.
Value at Risk	Colcord Estates	34° 15.887' N	110° 54.066' W		
Value at Risk	Fish Hatchery	34° 17.443' N	110° 48.423' W		
Value at Risk	Gillette Dip	34° 13.954' N	110° 57.592' W		
Value at Risk	Hagler Ranch	34° 12.579' N	110° 58.233' W		
Value at Risk	M O W Ranch	34° 16.916' N	110° 47.976' W		
Value at Risk	Ponderosa Estates	34° 15.938' N	110° 53.423' W		
Value at Risk	Sharp Creek Campground	34° 18.228' N	110° 59.986' W		

