

MEDICAL TRANSPORTATION AVIATION

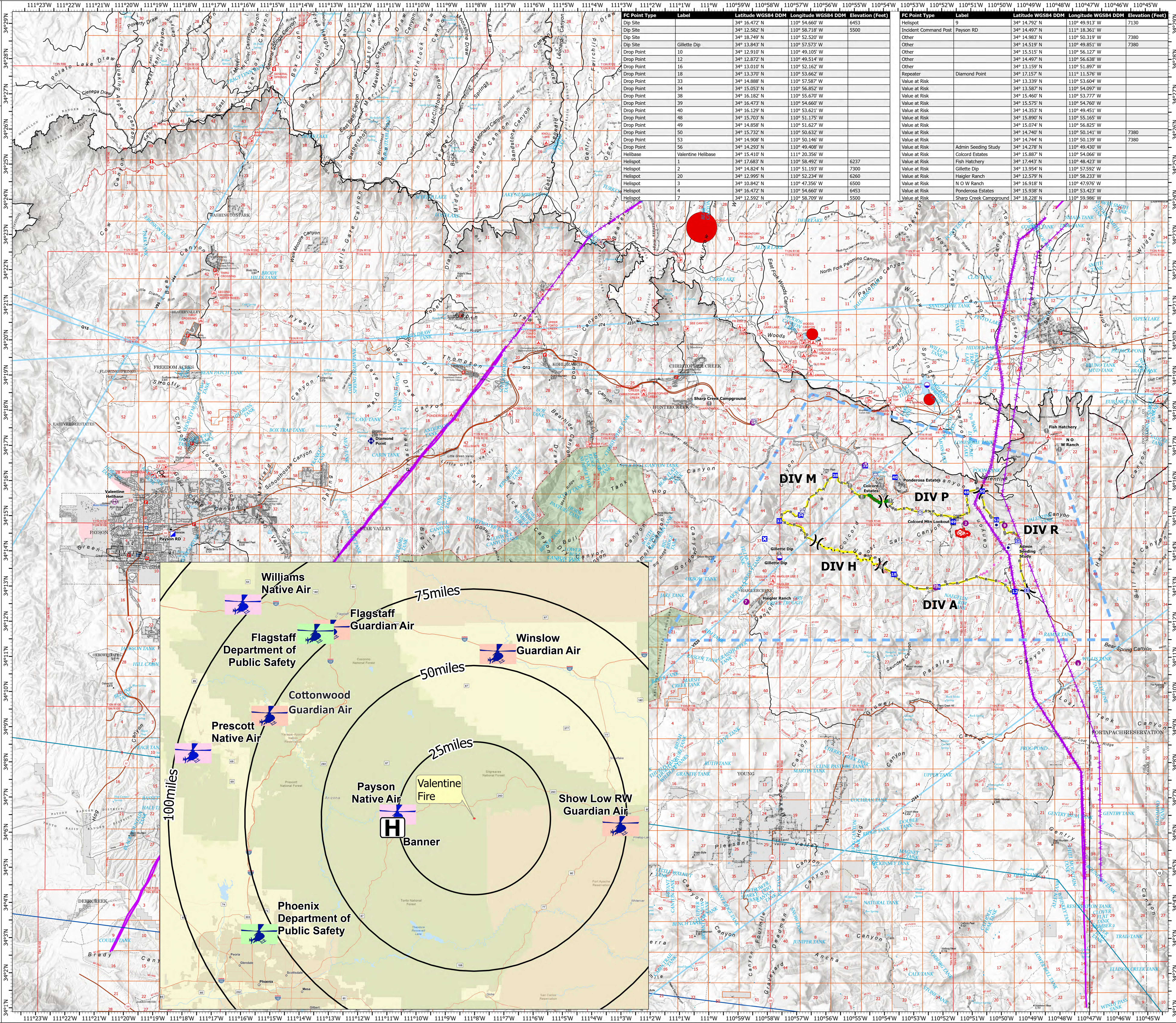
Valentine Fire

AZ-TNF-1315

9/5/2023

50 acres at 9/4/2023 @ 1235

- Other Property
- Water Tank
- Dip Site
- Helispot
- Helibase
- Division Break
- Incident Command Post
- Drop Point
- Closure
- Lookout
- Fire Origin
- Value at Risk
- Other
- Repair Point
- Repeater
- Completed Dozer Line
- Completed Hand Line
- Completed Mixed Construction Line
- Completed Road as Line
- Planned Hand Line
- Planned Road as Line
- Access or Improved Road
- Fence
- Highlighted Feature
- Other
- Repair Line
- Aerial Hazard
- Temporary Flight Restriction
- Uncontained
- Wildfire Daily Fire Perimeter
- Valentine Proposed Perimeter
- Rim Lakes Aerial Avoidance 2023
- Wilderness
- Secondary Highway
- Road, Unspecified
- Runways
- Non Forest
- Civil Airport w/o Facilities
- Air Traffic Service Route
- Visual Route
- Visual Route Outer Boundary
- Instrument Route Outer Boundary
- Main Power Line



FC Point Type	Label	Latitude WGS84 DDM	Longitude WGS84 DDM	Elevation (Feet)
Dip Site		34° 16.472' N	110° 54.660' W	6453
Dip Site		34° 12.582' N	110° 58.718' W	5500
Dip Site	Gillette Dip	34° 18.749' N	110° 52.529' W	
Dip Site		34° 13.843' N	110° 57.573' W	
Drop Point		34° 12.910' N	110° 49.105' W	
Drop Point	12	34° 12.872' N	110° 49.514' W	
Drop Point	16	34° 13.010' N	110° 52.162' W	
Drop Point	18	34° 13.370' N	110° 53.662' W	
Drop Point	33	34° 14.888' N	110° 57.587' W	
Drop Point	34	34° 15.053' N	110° 56.852' W	
Drop Point	38	34° 16.182' N	110° 55.670' W	
Drop Point	39	34° 16.473' N	110° 54.660' W	
Drop Point	40	34° 16.129' N	110° 53.621' W	
Drop Point	48	34° 15.703' N	110° 51.175' W	
Drop Point	49	34° 14.858' N	110° 51.627' W	
Drop Point	50	34° 15.732' N	110° 50.632' W	
Drop Point	53	34° 14.908' N	110° 50.146' W	
Drop Point	56	34° 14.293' N	110° 49.408' W	
Helibase	Valentine Helibase	34° 15.410' N	110° 50.356' W	6237
Helispot		34° 17.683' N	110° 58.382' W	7300
Helispot	2	34° 14.824' N	110° 51.193' W	
Helispot	20	34° 12.995' N	110° 52.234' W	6260
Helispot	3	34° 10.842' N	110° 47.356' W	6500
Helispot	4	34° 16.472' N	110° 54.660' W	6453
Helispot	7	34° 12.592' N	110° 58.709' W	5500

FC Point Type	Label	Latitude WGS84 DDM	Longitude WGS84 DDM	Elevation (Feet)
Helispot	9	34° 14.792' N	110° 49.913' W	7130
Incident Command Post	Payson RD	34° 14.967' N	110° 58.361' W	
Other		34° 14.963' N	110° 50.318' W	7380
Other		34° 14.519' N	110° 49.851' W	7380
Other		34° 15.515' N	110° 56.127' W	
Other		34° 14.497' N	110° 56.638' W	
Other		34° 13.159' N	110° 51.897' W	
Repeater	Diamond Point	34° 17.157' N	110° 51.576' W	
Value at Risk		34° 13.339' N	110° 53.604' W	
Value at Risk		34° 13.587' N	110° 54.097' W	
Value at Risk		34° 15.460' N	110° 53.777' W	
Value at Risk		34° 15.575' N	110° 54.760' W	
Value at Risk		34° 14.353' N	110° 49.451' W	
Value at Risk		34° 15.890' N	110° 55.165' W	
Value at Risk		34° 15.074' N	110° 56.825' W	
Value at Risk		34° 14.740' N	110° 50.141' W	7380
Value at Risk		34° 14.744' N	110° 50.139' W	7380
Value at Risk	Admin Seeding Study	34° 14.278' N	110° 49.430' W	
Value at Risk	Colcord Estates	34° 15.887' N	110° 54.066' W	
Value at Risk	Fish Hatchery	34° 17.443' N	110° 48.423' W	
Value at Risk	Gillette Dip	34° 13.954' N	110° 57.592' W	
Value at Risk	Haigler Ranch	34° 12.579' N	110° 58.233' W	
Value at Risk	N O W Ranch	34° 16.918' N	110° 47.976' W	
Value at Risk	Ponderosa Estates	34° 15.938' N	110° 53.423' W	
Value at Risk	Sharp Creek Campground	34° 18.228' N	110° 59.986' W	

