

MEDICAL TRANSPORT

GROUND

Valentine Fire

AZ-TNF-1315

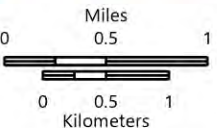
9/5/2023

50 acres at 9/4/2023 @ 1235

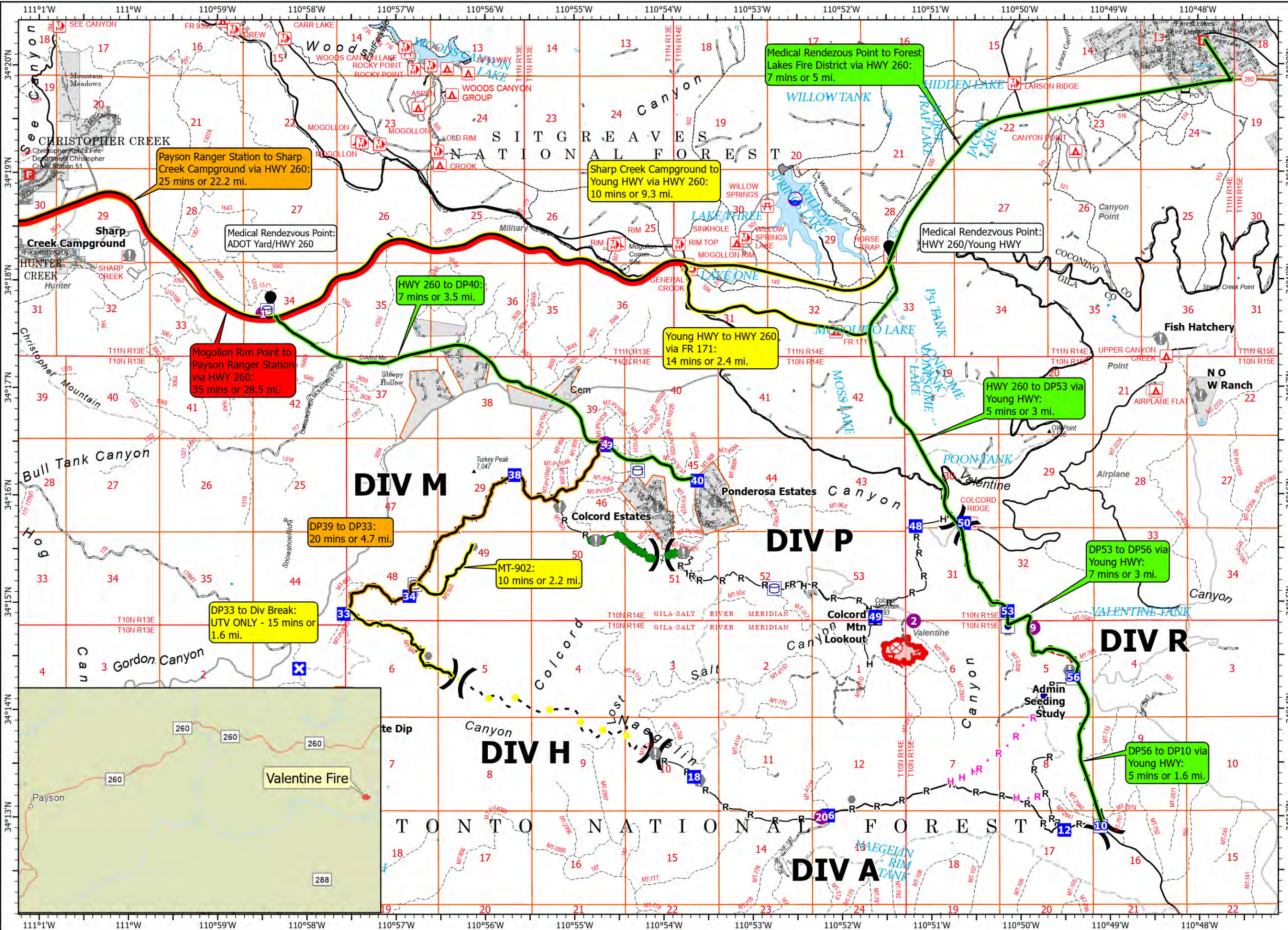
Drivetime

- 5-10 minutes
- 10-15 minutes
- 20-25 minutes
- 35+ minutes

- Other Property
- Water Tank
- Dip Site
- Helispot
- Division Break
- Drop Point
- Closure
- Lookout
- Fire Origin
- Value at Risk
- Other
- Repair Point
- Completed Dozer Line
- Completed Hand Line
- Completed Mixed Construction Line
- Completed Road as Line
- Planned Hand Line
- Planned Road as Line
- Access or Improved Road
- Fence
- Highlighted Feature
- Other
- Repair Line
- Uncontained
- Wildfire Daily Fire Perimeter



1:60,000 - Tonto GIS - 9/4/2023 2059
Acres from GPS
North American 1983 Datum, Lat/Long Grid



Payson Ranger Station to Sharp Creek Campground via HWY 260: 25 mins or 22.2 mi.

Sharp Creek Campground to Young HWY via HWY 260: 10 mins or 9.3 mi.

Medical Rendezvous Point to Forest Lakes Fire District via HWY 260: 7 mins or 5 mi.

Medical Rendezvous Point: ADOT Yard/HWY 260

Medical Rendezvous Point: HWY 260/Young HWY

HWY 260 to DP40: 7 mins or 3.5 mi.

Young HWY to HWY 260 via FR 171: 14 mins or 2.4 mi.

Mogollon Rim Point to Payson Ranger Station via HWY 260: 35 mins or 28.5 mi.

HWY 260 to DP53 via Young HWY: 5 mins or 3 mi.

DP39 to DP33: 20 mins or 4.7 mi.

MT-902: 10 mins or 2.2 mi.

DP53 to DP56 via Young HWY: 7 mins or 3 mi.

DP33 to Div Break: UTV ONLY - 15 mins or 1.6 mi.

DP56 to DP10 via Young HWY: 5 mins or 1.6 mi.