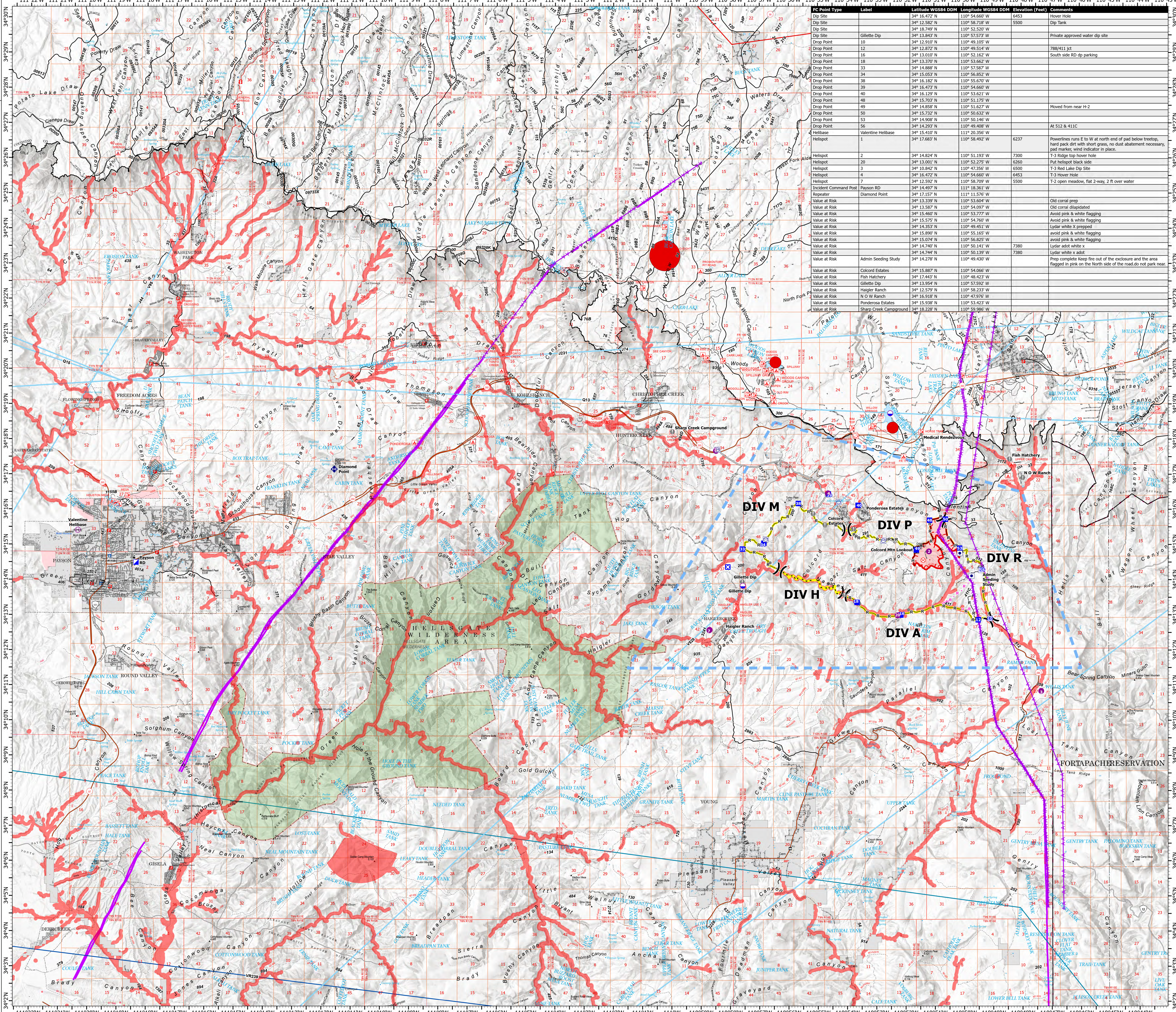


AIR OPERATIONS

Valentine Fire
AZ-TNF-1315
9/7/2023

708 acres at 9/6/2023 @ 1800

- Other Property
- Water Tank
- Dip Site
- Helispot
- Helibase
- Division Break
- Incident Command Post
- Drop Point
- Closure
- Lookout
- Fire Origin
- Value at Risk
- Other
- Repeater
- Completed Dozer Line
- Completed Hand Line
- Completed Mixed Construction Line
- Planned Road as Line
- Completed Hand Line
- Planned Road as Line
- Access or Improved Road
- Fence
- Highlighted Feature
- Other
- Repair Line
- Aerial Hazard
- Temporary Flight Restriction
- Uncontained
- Wildfire Daily Fire Perimeter
- Valentine Proposed Perimeter
- Rim Lakes Aerial Avoidance Area
- Aerial Fire Retardant Avoidance Area
- Wilderness
- CAMPGROUND
- PICNIC SITE
- TRAILHEAD
- HORSE CAMP
- INTERPRETIVE VISITOR CENTER
- Forest Service
- Cemetery
- City / Town Hall
- School (K - 12)
- College / University
- Post Office
- Fire Station / EMS Station
- Hospital / Medical Center
- Law Enforcement
- Court House; State Capitol; US Capitol
- Secondary Highway
- Road, Unspecified
- National Historic Scenic Trail GTC
- Trails Plus GTC
- National Trail USGS
- Runways
- USFS Proclaimed Forest Grassland
- USFS Administrative Forest
- USFS Ranger District
- USFS Wilderness
- State Conservation Area
- Non-forested Shore
- Dam / Weir
- Wash
- Lake / Pond
- Lake / Pond (Intermittent)
- Reservoir
- PLSS Township BLM
- BLMPLSSSections
- Non Forest
- BIA RESERVATIONS-Indian Land
- Urban Area
- Civil Airport w/o Facilities
- Air Traffic Service Route
- Visual Route
- Visual Route Outer Boundary
- Instrument Route Outer Boundary
- Main Power Line



FC Point Type	Label	Latitude WGS84 DDM	Longitude WGS84 DDM	Elevation (Feet)	Comments
Drop Site	1	34° 15.472' N	110° 56.716' W	6453	Hover Hole
Dip Site	2	34° 12.582' N	110° 52.520' W	5500	Dip Tank
Dip Site	3	34° 18.749' N	110° 52.520' W		
Dip Site	4	34° 13.843' N	110° 57.573' W		Private approved water dip site
Drop Point	5	34° 12.910' N	110° 49.105' W		
Drop Point	12	34° 12.872' N	110° 49.514' W		788/411 jct
Drop Point	16	34° 13.010' N	110° 53.163' W		
Drop Point	18	34° 13.200' N	110° 53.662' W		South side RD dip parking
Drop Point	33	34° 14.888' N	110° 57.587' W		
Drop Point	34	34° 15.053' N	110° 56.852' W		
Drop Point	38	34° 16.182' N	110° 55.670' W		
Drop Point	39	34° 16.473' N	110° 54.660' W		
Drop Point	40	34° 16.529' N	110° 53.629' W		
Drop Point	48	34° 15.703' N	110° 51.175' W		
Drop Point	49	34° 14.858' N	110° 51.627' W		Moved from near H-2
Drop Point	50	34° 15.732' N	110° 50.632' W		
Drop Point	53	34° 14.908' N	110° 50.146' W		
Drop Point	56	34° 14.293' N	110° 49.406' W		At 512 & 411C
Helibase	Valentine Helibase	34° 15.410' N	110° 52.356' W		
Helispot	1	34° 17.683' N	110° 58.492' W	6237	Powerlines runs E to W at north end of pad below treemap, hard pack dirt with short grass, no dust abatement necessary, pad marker, wind indicator in place.
Helispot	2	34° 14.824' N	110° 51.193' W	7300	Put helispot black side
Helispot	20	34° 13.001' N	110° 52.275' W	6260	T-3 Red Lake Dip Site
Helispot	3	34° 10.842' N	110° 47.356' W	6500	T-3 Hover Hole
Helispot	4	34° 16.472' N	110° 54.660' W	6453	T-3 Hover Hole
Helispot	7	34° 12.592' N	110° 58.709' W		T-2 open meadow, flat 2-way, 2 ft over water
Incident Command Post	Payson RD	34° 14.897' N	110° 54.367' W		
Drop Point	Diamond Point	34° 17.157' N	111° 11.576' W		
Value at Risk	1	34° 13.399' N	110° 53.604' W		Old corral prep
Value at Risk	2	34° 13.587' N	110° 54.097' W		Old corral prep
Value at Risk	3	34° 14.460' N	110° 53.777' W		Avoid pink & white flagging
Value at Risk	4	34° 15.575' N	110° 54.760' W		Avoid pink & white flagging
Value at Risk	5	34° 14.453' N	110° 54.953' W		Lidar white x prep
Value at Risk	6	34° 15.165' N	110° 55.165' W		avoid pink & white flagging
Value at Risk	7	34° 15.074' N	110° 56.825' W		avoid pink & white flagging
Value at Risk	8	34° 14.740' N	110° 50.141' W	7380	Lidar white x
Value at Risk	9	34° 14.744' N	110° 50.139' W	7380	Lidar white x
Value at Risk	10	34° 14.278' N	110° 49.430' W		Prep complete keep fire out of the enclosure and the area flagged in pink on the north side of the road, do not park near
Value at Risk	11	34° 15.887' N	110° 54.066' W		
Value at Risk	12	34° 17.443' N	110° 48.423' W		
Value at Risk	13	34° 13.954' N	110° 57.592' W		
Value at Risk	14	34° 12.579' N	110° 58.233' W		
Value at Risk	15	34° 16.518' N	110° 49.978' W		
Value at Risk	16	34° 15.938' N	110° 53.423' W		
Value at Risk	17	34° 18.228' N	110° 59.986' W		

