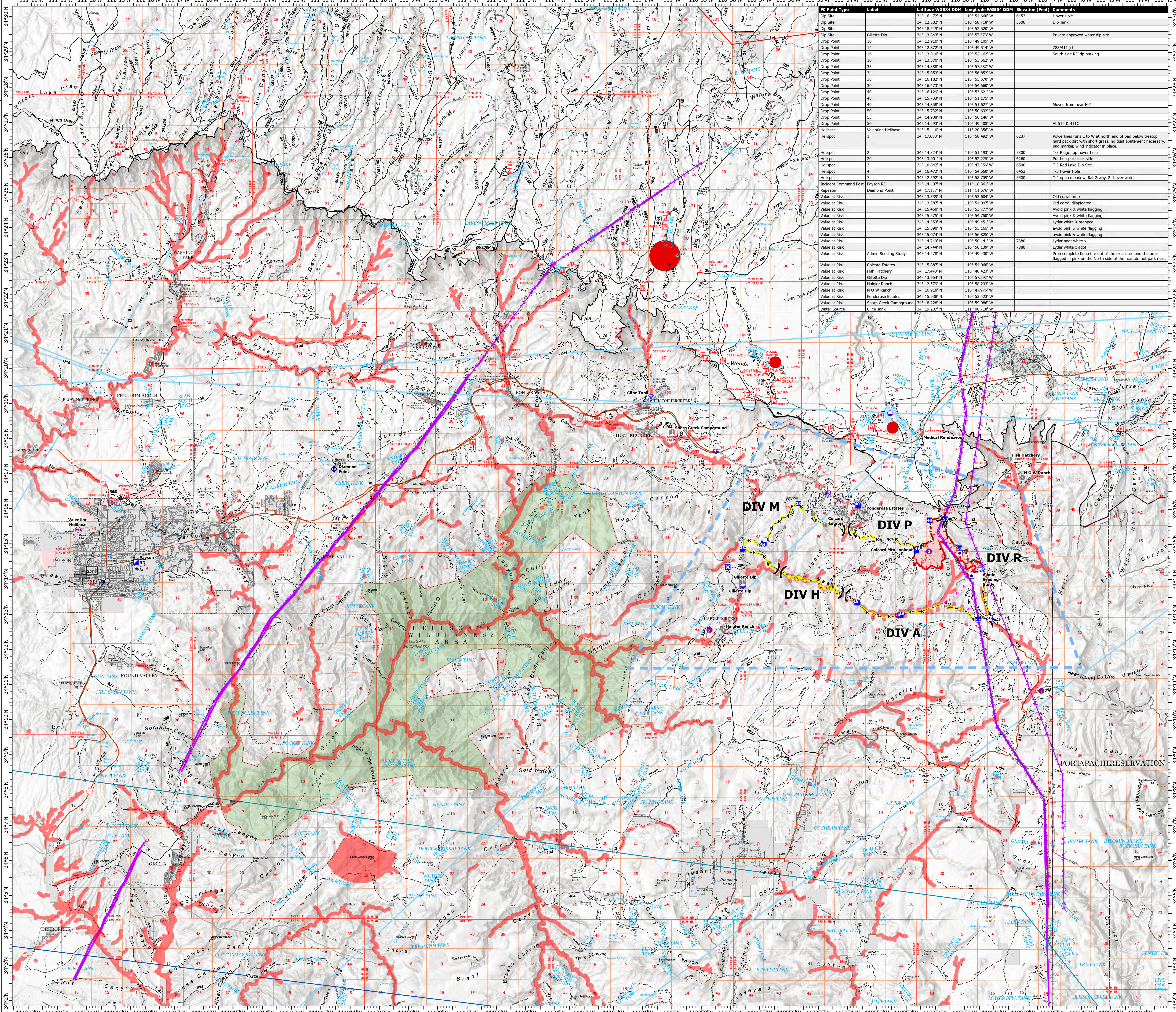



AIR OPERATIONS

Valentine Fire
AZ-TNF-1315
9/8/2023
955 acres at 9/7/2023 @ 1000

- Other Property
- Water Tank
- Dip Site
- Helispot
- Helibase
- Division Break
- Incident Command Post
- Drop Point
- Closure
- Lookout
- Fire Origin
- Value at Risk
- Other
- Repeater
- Water Source
- Completed Dozer Line
- Completed Hand Line
- Completed Mixed Construction Line
- Completed Road as Line
- Planned Hand Line
- Planned Road as Line
- Access or Improved Road
- Fence
- Highlighted Feature
- Other
- Repair Line
- Aerial Hazard
- Temporary Flight Restriction
- Uncontained
- Wildfire Daily Fire Perimeter
- Valentine Proposed Perimeter - 10,085 Acres
- Rim Lakes Aerial Avoidance 2023
- Aerial Fire Retardant Avoidance Area
- Wilderness
- CAMPGROUND
- PICNIC SITE
- TRAILHEAD
- HORSE CAMP
- INTERPRETIVE VISITOR CENTER
- Forest Service
- Cemetery
- City / Town Hall
- School (K - 12)
- College / University
- Post Office
- Fire Station / EMS Station
- Hospital / Medical Center
- Law Enforcement
- Court House, State Capitol, US Capitol
- Secondary Highway
- Road, Unspecified
- National Historic Scenic Trail GTAC
- Trail
- National Trail USGS
- Runways
- USFS Proclaimed Forest Grassland
- USFS Administrative Forest
- USFS Ranger District
- USFS Wilderness
- State Conservation Area
- Nonnearthen Shore
- Dam / Weir
- Wash
- Lake / Pond
- Lake / Pond (Intermittent)
- Reservoir
- PLSS Township BLM
- PLSS Sections BLM
- Non Forest
- BIA Tribal Land
- Urban Area
- Civil Airport w/o Facilities
- Air Traffic Service Route
- Visual Route
- Visual Route Outer Boundary
- Instrument Route Outer Boundary
- Main Power Line





FC Point Type	Label	Latitude WGS84 DDM	Longitude WGS84 DDM	Elevation (Feet)	Comments
Dip Site	1	34° 18.672' N	110° 54.660' W	1413	Water hole
Dip Site	2	34° 18.749' N	110° 52.520' W	5500	Dip Tank
Dip Site	3	34° 18.843' N	110° 57.573' W		Private approved water dip site
Drop Point	10	34° 12.910' N	110° 49.105' W		
Drop Point	12	34° 12.872' N	110° 49.514' W		788/411 jet
Drop Point	16	34° 13.010' N	110° 52.162' W		South side RD dip parking
Drop Point	18	34° 13.370' N	110° 53.662' W		
Drop Point	33	34° 14.888' N	110° 57.887' W		
Drop Point	34	34° 15.053' N	110° 56.852' W		
Drop Point	38	34° 16.182' N	110° 55.670' W		
Drop Point	39	34° 16.472' N	110° 54.660' W		
Drop Point	40	34° 16.129' N	110° 53.621' W		
Drop Point	48	34° 15.703' N	110° 51.175' W		
Drop Point	49	34° 14.858' N	110° 51.627' W		Moved from near H-2
Drop Point	50	34° 15.732' N	110° 50.632' W		
Drop Point	53	34° 14.908' N	110° 50.146' W		
Drop Point	56	34° 14.293' N	110° 49.408' W		At 512 & 411C
Helibase	Valentine Helibase	34° 15.410' N	111° 20.356' W		
Helispot	1	34° 17.683' N	110° 58.492' W	6237	Powerlines runs E to W at north end of pad below treemap, hand pack dirt with short grass, no dust abatement necessary, post marker, wind indicator in place.
Helispot	2	34° 14.824' N	110° 51.193' W	7300	T-3 Ridge top hover hole
Helispot	20	34° 13.001' N	110° 52.275' W	6260	Put helispot black side
Helispot	3	34° 10.842' N	110° 47.556' W	6500	T-3 Red Lake Dip Site
Helispot	4	34° 16.472' N	110° 54.660' W	6453	T-3 Hover hole
Helispot	7	34° 12.552' N	110° 58.709' W	5500	T-2 open meadow, flat 2-way, 2 ft over water
Incident Command Post	Payson RD	34° 14.497' N	111° 18.361' W		
Repeater	Diamond Point	34° 17.157' N	111° 17.576' W		
Value at Risk	34° 13.339' N	110° 53.604' W		Old cornal prap	
Value at Risk	34° 13.407' N	110° 54.097' W		Old cornal dissipatoid	
Value at Risk	34° 13.460' N	110° 53.777' W		Avoid pink & white flagging	
Value at Risk	34° 15.725' N	110° 54.769' W		Avoid pink & white flagging	
Value at Risk	34° 14.353' N	110° 49.451' W		Lydar white X prupped	
Value at Risk	34° 15.890' N	110° 55.165' W		avoid pink & white flagging	
Value at Risk	34° 15.078' N	110° 54.629' W		avoid pink & white flagging	
Value at Risk	34° 14.740' N	110° 50.141' W	7380	Lydar adot white x	
Value at Risk	34° 14.744' N	110° 50.139' W	7380	Lydar white x adot	
Value at Risk	34° 14.278' N	110° 49.430' W		Prep complete keep fire out of the enclosure and the area flagged in pink on the North side of the road.do not park near	
Value at Risk	34° 15.887' N	110° 54.066' W			
Value at Risk	34° 17.443' N	110° 48.423' W			
Value at Risk	34° 13.954' N	110° 57.592' W			
Value at Risk	34° 12.579' N	110° 58.233' W			
Value at Risk	34° 16.918' N	110° 47.976' W			
Value at Risk	34° 15.938' N	110° 53.423' W			
Value at Risk	34° 18.228' N	110° 59.986' W			
Water Source	Cline Tank	34° 19.207' N	111° 00.718' W		



Miles
0 1 2 4

Kilometers
0 1 2 4



1:60,000 - Tonto GIS - 9/7/2023 2052
Acres from GPS
North American 1983 Datum, LatLong Grid