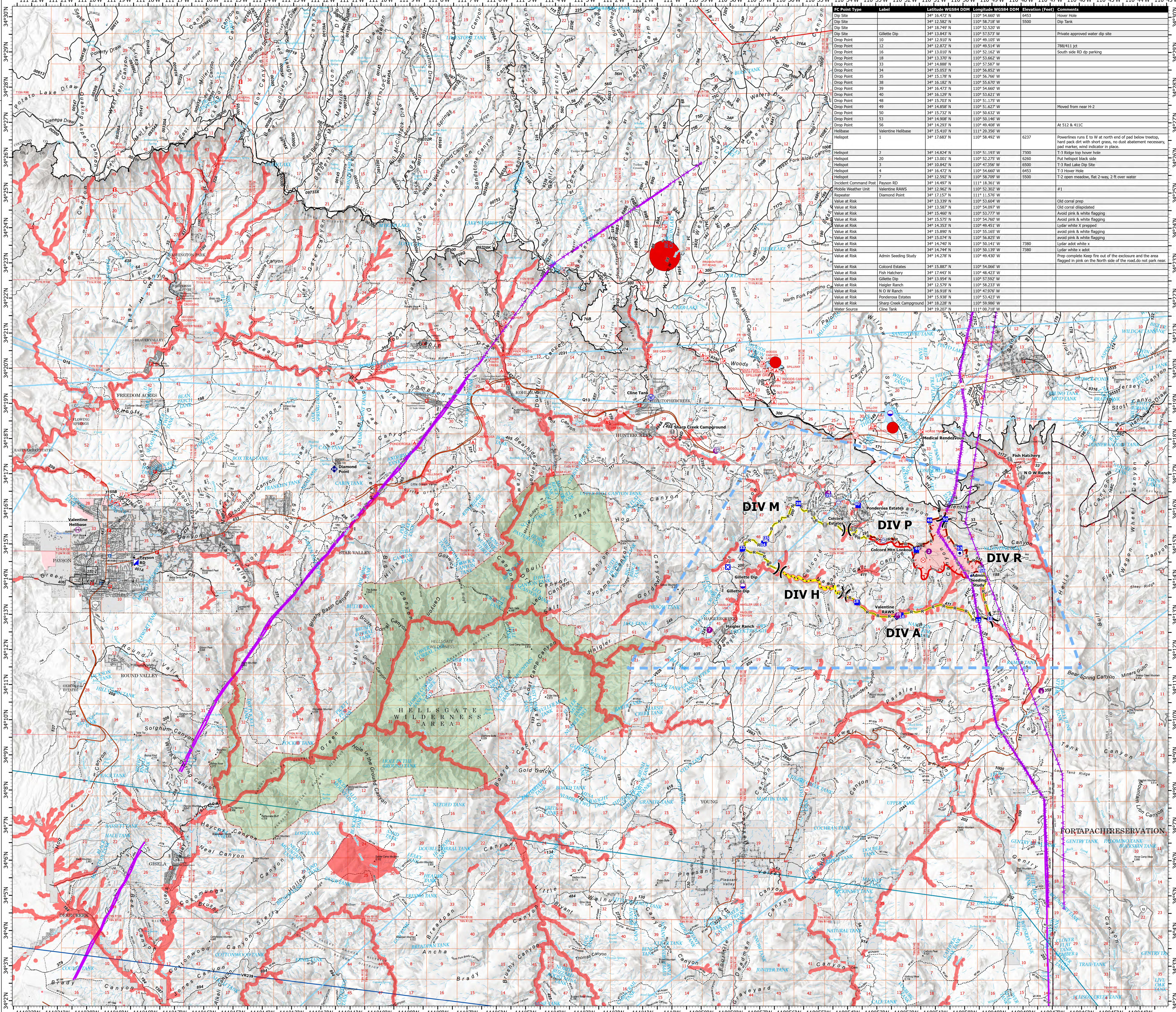


AIR OPERATIONS

Valentine Fire
AZ-TNF-1315
9/10/2023

1,491 acres on 9/9/2023 @ 1620

- Other Property
- Water Tank
- Dip Site
- Helispot
- Helibase
- Division Break
- Incident Command Post
- Drop Point
- Closure
- Lookout
- Fire Origin
- Value at Risk
- Other
- Mobile Weather Unit
- Repeater
- Water Source
- Completed Dozer Line
- Completed Hand Line
- Completed Mixed Construction Line
- Completed Road as Line
- Access or Improved Road
- Fence
- Highlighted Feature
- Other
- Repair Line
- Aerial Hazard
- Temporary Flight Restriction
- Uncontained
- Wildfire Daily Fire Perimeter
- Completed Fireline
- Rim Lakes Aerial Avoidance 2023
- Aerial Fire Retardant Avoidance Area
- Wilderness
- Campground
- Picnic Site
- Trailhead
- Horse Camp
- Interpretive Visitor Center
- Forest Service
- Cemetery
- City / Town Hall
- School (K - 12)
- College / University
- Post Office
- Fire Station / EMS Station
- Hospital / Medical Center
- Law Enforcement
- Court House; State Capitol; US Capitol
- Secondary Highway
- Road, Unspecified
- Trail
- Runways
- USFS Proclaimed Forest Grassland
- USFS Administrative Forest
- USFS Ranger District
- USFS Wilderness
- State Conservation Area
- Nonearthen Shore
- Artificial Path
- Pipeline Underground
- Stream/River
- Stream/River Intermittent
- Dam / Weir
- Wash
- Lake / Pond
- Lake / Pond (Intermittent)
- Reservoir
- PLSS Township
- PLSS Section
- Non Forest
- BIA Tribal Land
- Urban Area
- Civil Airport w/o Facilities
- Air Traffic Service Route
- Visual Route
- Visual Route Outer Boundary
- Instrument Route Outer Boundary
- Main Power Line



IC Point Type	Label	Latitude WGS84 DDM	Longitude WGS84 DDM	Elevation (Feet)	Comments
Dip Site		34° 12.582' N	110° 58.718' W	5500	Dip Tank
Dip Site		34° 18.749' N	110° 52.520' W		
Dip Site	Gillette Dip	34° 13.843' N	110° 57.573' W		Private approved water dip site
Drop Point		34° 12.910' N	110° 49.105' W		
Drop Point		34° 12.872' N	110° 49.514' W		2884111 ct
Drop Point		34° 13.010' N	110° 52.162' W		South side RD dip parking
Drop Point		34° 13.370' N	110° 53.662' W		
Drop Point		34° 14.888' N	110° 57.587' W		
Drop Point		34° 15.827' N	110° 49.865' W	6453	
Drop Point		34° 15.178' N	110° 56.766' W		
Drop Point		34° 16.182' N	110° 55.670' W		
Drop Point		34° 16.473' N	110° 54.660' W		
Drop Point		34° 16.129' N	110° 53.621' W		
Drop Point		34° 15.217' N	110° 54.660' W		
Drop Point		34° 14.858' N	110° 51.627' W		Moved from near H-2
Drop Point		34° 15.732' N	110° 50.632' W		
Drop Point		34° 14.908' N	110° 50.146' W		
Drop Point		34° 15.208' N	110° 53.175' W		
Helibase	Valentine Helibase	34° 15.410' N	111° 20.356' W		
Helispot		34° 17.683' N	110° 58.492' W	6237	Powerlines runs E to W at north end of pad below treetop, hard pack dirt with short grass, no dust abatement necessary, good marker, wind indicator in place.
Helispot		34° 14.824' N	110° 51.193' W	7300	T-3 Ridge top hover hole
Helispot		34° 13.001' N	110° 52.275' W	6260	Put helispot black side
Helispot		34° 10.892' N	110° 47.556' W	6500	T-3 Red Lake Dip Site
Helispot		34° 15.472' N	110° 54.660' W	6453	T-3 House Hole
Helispot		34° 12.592' N	110° 58.709' W	5500	T-2 open meadow, flat 2-way, 2 ft over water
Incident Command Post	Payson RD	34° 14.497' N	111° 18.361' W		
Mobile Weather Unit	Valentine RAWS	34° 12.962' N	110° 52.302' W		#1
Repeater	Diamond Point	34° 12.717' N	111° 11.776' W		
Value at Risk		34° 13.339' N	110° 53.624' W		Old coral prep
Value at Risk		34° 13.587' N	110° 54.097' W		Old coral degraded
Value at Risk		34° 15.460' N	110° 53.777' W		Avoid pink & white flagging
Value at Risk		34° 15.375' N	110° 54.760' W		Avoid pink & white flagging
Value at Risk		34° 14.253' N	110° 49.811' W		Lidar white x dropped
Value at Risk		34° 15.890' N	110° 55.165' W		avoid pink & white flagging
Value at Risk		34° 15.074' N	110° 56.825' W		avoid pink & white flagging
Value at Risk		34° 14.740' N	110° 50.141' W	7380	Lidar add white x
Value at Risk		34° 14.274' N	110° 50.139' W	7380	Lidar white x add
Value at Risk	Admin Seeding Study	34° 14.278' N	110° 49.430' W		Prep complete keep fire out of the enclosure and the area flagged in pink on the North side of the road do not park near
Value at Risk	Colcord Estates	34° 15.887' N	110° 54.666' W		
Value at Risk	Fish Hatchery	34° 17.417' N	110° 48.423' W		
Value at Risk	Gillette Dip	34° 13.954' N	110° 57.592' W		
Value at Risk	Haigler Ranch	34° 12.579' N	110° 58.233' W		
Value at Risk	N O W Ranch	34° 16.918' N	110° 47.976' W		
Value at Risk	Ponderosa Estates	34° 15.938' N	110° 53.423' W		
Value at Risk	Sharp Creek Campground	34° 19.208' N	110° 59.869' W		
Water Source	Cline Tank	34° 19.207' N	111° 00.718' W		

