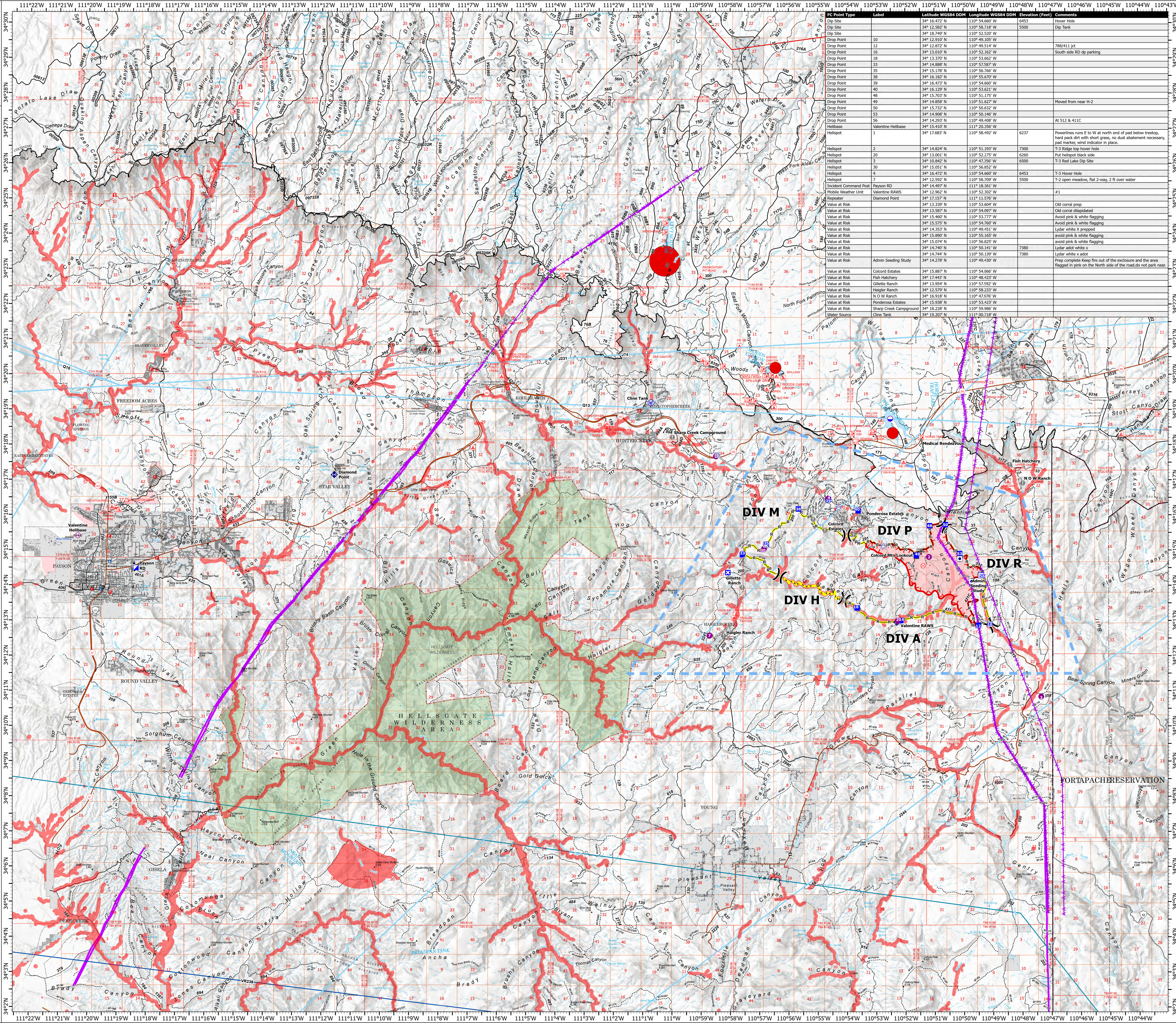


AIR OPERATIONS

Valentine Fire
AZ-TNF-1315
9/13/2023
2,672 acres at 9/12/2023 @ 0900

- Other Property
- Water Tank
- Dip Site
- Helispot
- Helibase
- Division Break
- Incident Command Post
- Drop Point
- Closure
- Lookout
- Fire Origin
- Value at Risk
- Other
- Mobile Weather Unit
- Repeater
- Water Source
- Completed Dozer Line
- Completed Hand Line
- Completed Road as Line
- Access or Improved Road
- Fence
- Highlighted Feature
- Other
- Repair Line
- Aerial Hazard
- Temporary Flight Restriction
- Uncontained
- Wildfire Daily Fire Perimeter
- Completed Fireline
- Rim Lakes Aerial Avoidance 2023
- Aerial Fire Retardant Avoidance Area
- Wilderness
- Campground
- Picnic Site
- Trailhead
- Horse Camp
- Interpretive Visitor Center
- Forest Service
- Cemetery
- City / Town Hall
- School (K - 12)
- College / University
- Post Office
- Fire Station / EMS Station
- Hospital / Medical Center
- Law Enforcement
- Court House; State Capitol; US Capitol
- Secondary Highway
- Road, Unspecified
- Trail
- Runways
- USFS Proclaimed Forest Grassland
- USFS Administrative Forest
- USFS Ranger District
- USFS Wilderness
- State Conservation Area
- Nonarthen Shore
- Artificial Path
- Pipeline Underground
- Stream/River
- Stream/River Intermittent
- Dam / Weir
- Wash
- Lake / Pond
- Lake / Pond (Intermittent)
- Reservoir
- PLSS Township
- PLSS Section
- Non Forest
- BIA Tribal Land
- Urban Area
- Civil Airport w/o Facilities
- Air Traffic Service Route
- Visual Route
- Visual Route Outer Boundary
- Instrument Route Outer Boundary
- Main Power Line



IC Point Type	Label	Latitude WGS84 DDM	Longitude WGS84 DDM	Elevation (Feet)	Comments
Dip Site	1	34° 12.582' N	110° 52.118' W	5500	Dip Tank
Drop Point	10	34° 12.910' N	110° 49.105' W		
Drop Point	12	34° 12.827' N	110° 49.514' W		788/111 jet
Drop Point	16	34° 13.010' N	110° 53.162' W		South side RD dip parking
Drop Point	18	34° 13.370' N	110° 53.662' W		
Drop Point	33	34° 14.888' N	110° 57.587' W		
Drop Point	35	34° 15.178' N	110° 56.766' W		
Drop Point	38	34° 16.182' N	110° 56.670' W		
Drop Point	39	34° 16.472' N	110° 54.662' W		
Drop Point	40	34° 16.229' N	110° 53.621' W		
Drop Point	48	34° 15.703' N	110° 51.175' W		
Drop Point	49	34° 14.858' N	110° 51.627' W		Moved from near H-2
Drop Point	50	34° 15.732' N	110° 52.632' W		
Drop Point	53	34° 16.926' N	110° 52.146' W		
Drop Point	56	34° 14.293' N	110° 49.408' W		
Helibase	Valentine Helibase	34° 15.410' N	110° 49.356' W		At 512 & 411C
Helispot	1	34° 17.683' N	110° 58.492' W	6237	Powerlines runs E to W at north end of pad below treemap, hard pack dirt with short grass, no dust abatement necessary, pad marker, wind indicator in place.
Helispot	2	34° 14.824' N	110° 51.193' W	7300	T-3 Ridge top hover hole
Helispot	20	34° 13.001' N	110° 52.275' W	6260	Put helispot back side
Helispot	2	34° 10.862' N	110° 49.362' W	6500	T-3 Red Lake Dip Site
Helispot	30	34° 15.051' N	110° 56.852' W		
Helispot	4	34° 16.472' N	110° 54.662' W	6453	T-3 Hover Hole
Helispot	7	34° 12.592' N	110° 58.709' W	5500	T-2 open meadow, flat 2-way, 2 ft over water
Incident Command Post	Payson RD	34° 14.497' N	111° 18.361' W		
Mobile Weather Unit	Valentine RAW5	34° 12.862' N	110° 52.362' W		#1
Repeater	Diamond Point	34° 17.157' N	111° 11.576' W		
Value at Risk		34° 13.339' N	110° 53.604' W		Old coral prep
Value at Risk		34° 13.587' N	110° 54.097' W		Old coral dilapidated
Value at Risk		34° 15.460' N	110° 53.777' W		Avoid pink & white flagging
Value at Risk		34° 15.579' N	110° 54.797' W		Avoid pink & white flagging
Value at Risk		34° 14.353' N	110° 49.451' W		Lycar white X prep
Value at Risk		34° 15.890' N	110° 55.165' W		avoid pink & white flagging
Value at Risk		34° 15.074' N	110° 56.825' W		avoid pink & white flagging
Value at Risk		34° 14.740' N	110° 50.143' W	7380	Lycar adobe white X
Value at Risk		34° 14.744' N	110° 50.926' W	7380	Lycar white X adobe
Value at Risk	Admin Seeding Study	34° 14.278' N	110° 49.430' W		Prep complete keep fire out of the enclosure and the area flagged in pink on the North side of the road do not park near
Value at Risk	Colcord Estates	34° 13.807' N	110° 54.065' W		
Value at Risk	Fish Hatchery	34° 12.443' N	110° 54.423' W		
Value at Risk	Gillette Ranch	34° 13.954' N	110° 57.952' W		
Value at Risk	Haigler Ranch	34° 12.579' N	110° 58.233' W		
Value at Risk	N O W Ranch	34° 16.918' N	110° 47.976' W		
Value at Risk	Ponderosa Estates	34° 15.938' N	110° 53.423' W		
Value at Risk	Sharp Creek Campground	34° 18.298' N	110° 50.966' W		
Value at Risk	Cline Tank	34° 19.207' N	111° 00.718' W		

Miles 0 1 2 4
Kilometers 0 1 2 4

1:60,000 Tonto GIS - 9/12/2023 1744
Acres from IR and GPS
North American 1983 Datum, LatLong Grid